

**14<sup>th</sup> Street Streetscape Project N.W.**  
**From Thomas Circle to Florida Ave**  
**DC Contract No.: DCKA-2016-C-0043**

**FAP No.: STP-2016 (054)**

**CONSTRUCTION MANAGER'S**  
**WEEKLY PROGRESS REPORT**  
**08/27/2018 – 09/01/2018**

**Project Website:** [www.14thstreetproject.com](http://www.14thstreetproject.com)



*Combine Sewer Manhole and connection pipe to Double Catch Basin at Rhode Island Ave on the Westside*

## 1. EXECUTIVE SUMMARY

### Project Description:

The scope of the construction work includes the followings:

- The removal and disposal of existing roadway pavement, curb and gutter and sidewalks, milling of existing asphalt pavement to the extents shown on plans.
- The resurfacing of existing asphalt pavement using 2" Superpave AC surface on 14<sup>th</sup> Street between Thomas Circle and Florida Ave as shown in the plans.
- The replacement of all curbs and gutters with Granite Curbs, 12" Brick Gutter, Concrete Sidewalk, Wheelchair/Bicycle Ramps, and Cobble Stone LID Paver, Bioretention Planters as shown on the plans or as directed.
- The removal and transportation to storage yard of Existing Traffic Signals and Light Poles as shown on plans. Traffic signal relocation and equipment upgrading of Traffic Signals at all intersections of 14<sup>th</sup> Street within the project limit as shown on plans.
- Streetscaping throughout the 14<sup>th</sup> Street corridor as shown in the plans.
- The installation of traffic signing and permanent pavement markings.
- Upgrading of street lighting throughout the 14<sup>th</sup> Street corridor as shown in the plans.
- Construction and upgrading of single catch basin, double catch basin, and triple catch basin.
- Construction / Upgrading of new Watermains, Fire Hydrants
- Full Reconstruction of R Street.
- Installation of new Bus Islands and bus pads as shown on the plans and as directed.
- The installation and use of erosion and sediment control measures as required.
- Mobilization and demobilization, performance of field layout, provision and maintenance of engineer's field facilities, progress photographs, and the proper maintenance of vehicular and pedestrian traffic during construction, including provision of all required construction warning and detour signs and traffic control devices.

### Work by Others

The PEPCO manhole replacement or vault adjustments activities will be done by others approved by PEPCO. The ATCS CM team will coordinate all these activities with the Contractor and PEPCO.

## 2. STATUS OF CONSTRUCTION / PROGRESS SUMMARY

### Progress Summary:

1. Omni onsite excavating and installing electrical conduits and manholes
2. Omni adjusting and installing Catch Basins and Combine Sewer Manholes
3. Omni excavating and installing Street Light Foundations
4. FMCC onsite providing MOT for Omni

### CM Community Outreach Activities

1. Connected with retailers and property owners in project corridor to provide updates and address any questions or concerns.
2. Project Website is up and running. Responded to email questions that came through Project Website.

## 3. ISSUES / ACTION ITEMS

- Ongoing Issues / Items: Bus Shelter Removal / Installation, PEPCO Manhole conflicts

- New Issues / Items:
- Action Items: Pepco scheduling to look at conflict and give CM a report on time frame.
- Spoke with Carla Longshore from DDOT TDD. Need to reach back out to get assistance with Clear Channel

## 4. MEETINGS / PROJECT COORDINATION

Progress Meeting are schedule at the Field Office every Tuesday at 10:30am

## 5. DAILY WORK PERFORMED

### Monday 08/27/2018

1. Omni continued installing 4" and 2" PVC Conduit between MH-21 to MH-23. L-42 to MH-29, L40 to C24, MH-28 to EM02
2. Omni continued to construct the Brick Combined Sewer Manhole (MH-04)
3. FMCC was onsite providing MOT for these operations

### Tuesday 08/28/2018

1. Omni backfilled with RC-6 and 6" of Aggregate Base material between M-28 to EM02, L42 to MH-29, L40 to C24, and MH-21 to MH-23
2. Omni placed Class E concrete as PCC base over approved Aggregate Base Material
3. Omni continued to work on constructing the Brick Combined Sewer Manhole (MH-04)
4. FMCC was onsite providing MOT for these operations

### Wednesday 08/29/2018

1. Omni continued installing 4" PVC Conduit between MH-31 to MH 32
2. Omni installed two (2) manholes (MH-31 and MH-32)
3. Omni installed the 15" PCC connection Pipe from MH-04 to CB-05
4. FMCC was onsite providing MOT for these operations

### Thursday 08/30/2018

1. Omni continued installing 2" and 4" PVC Conduit between L48 to C27, MH-32 to MH-30, MH-30 to MH-33
2. Omni formed and poured one (1) Street Light Foundation for L48
3. Omni poured DC WASA mix for the cradle for the 15" PCC connection Pipe from MH-04 to CB-05
4. FMCC was onsite providing MOT for these operations

### Friday 08/31/2018

1. Omni backfilled with RC-6 and 6" of Aggregate Base material between MH-31 to MH-33, MH-30 to MH-32, around MH-20.
2. Omni removed one (1) 6" Tree at the NW corner of Rhode Island Ave
3. Omni complete the Combine Sewer Manhole (MH-04)
4. FMCC was onsite providing MOT for these operations.

- 5. Contractor stop all work at 12pm due to Holiday restrictions

## Saturday 09/01/2018

- 1. Contractor could not work due to Holiday Restrictions

## 6. INSPECTION & MATERIAL TESTS PERFORMED

- 8/30/18 3 CY DC WASA Mix – Air 5.2%, Slump 3 1/2", Cylinders were made

## 7. RFI's / SUBMITTALS

- Requests For Information:
  - o We have received 10 RFIs; 10 RFIs have been answered.
- Submittals:
  - o We have received 62 Submittals; 60 Submittals have been Approved

## 8. CHANGE ORDERS/TASK ORDERS

- o None

## 9. DBE or CBE PARTICIPATION SUMMARIES

- ATCS CBE / DBE Activity:
  - o Hayat Brown LLC.: Provided Office Engineering support for this project.
- ATCS CBE / DBE Activity
  - o Cube Root, Corp.: Providing an Electrical Inspector to support the project.
- Fort Myer Construction Corp. DBE Activity:
  - o Omni Excavators Inc.

## 10. ACCIDENTS / INCIDENTS

- None

## 11. PHOTOS OF WORK PERFORMED THIS PERIOD





*Site Clean Up prior to the Holiday Weekend*

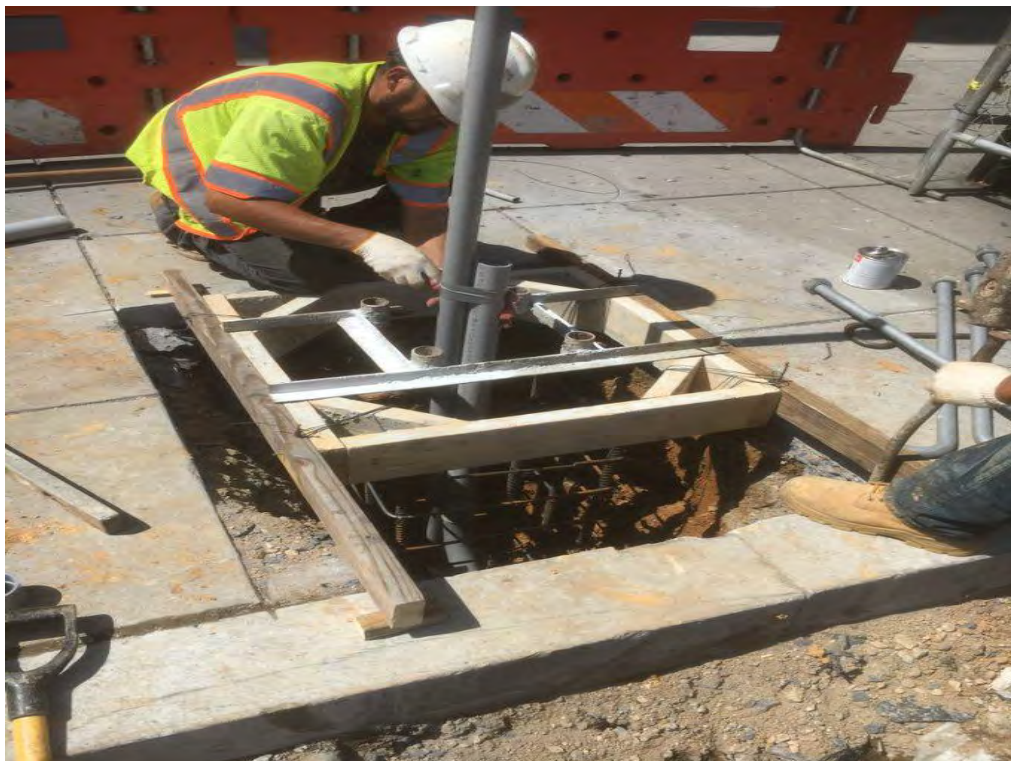


*Encasement of PVC Conduit on Church Street*





*Pouring Class E Concrete for PCC Base over Laterals*

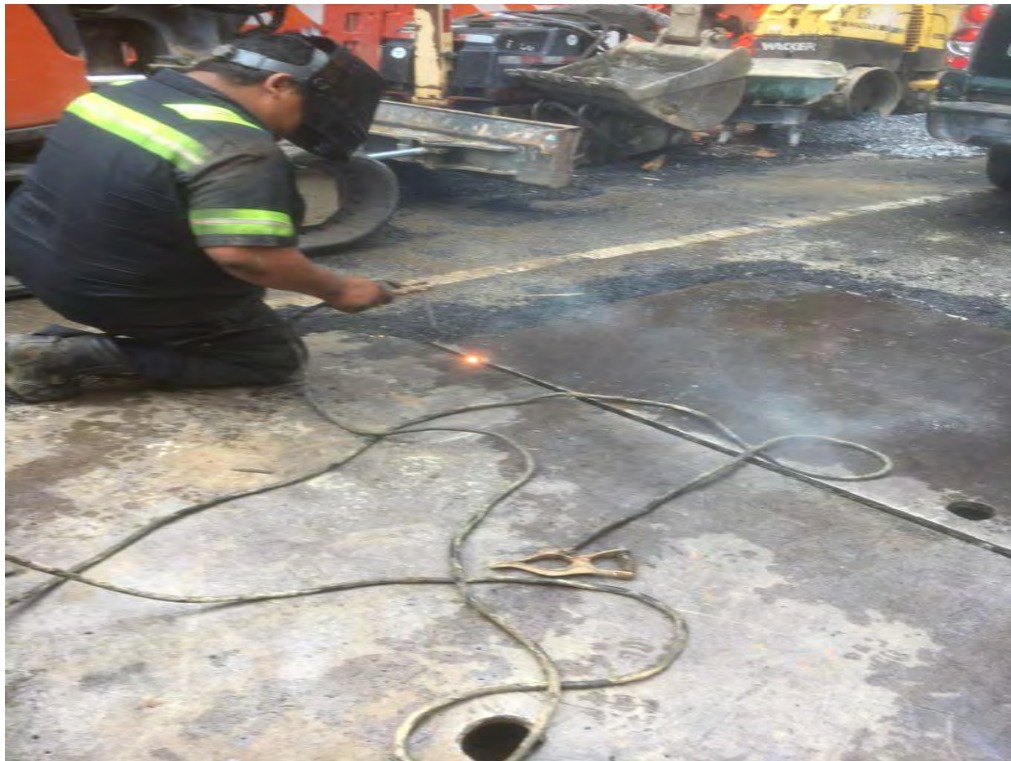


*Forming of Street Light Foundation*





*Density Testing of Aggregate Base Material prior to PCC Base placement*



*Contractor Welding Steel Plates*