

**14<sup>th</sup> Street Streetscape Project N.W. From  
Thomas Circle to Florida Ave  
DC Contract No.: DCKA-2016-C-0043**

FAP No.: STP-2016 (054)

---

**CONSTRUCTION MANAGER'S  
WEEKLY PROGRESS REPORT  
01/12/2019 - 01/18/2020**

---

**Project Website:** [www.14thstreetproject.com](http://www.14thstreetproject.com)



FMCC spreading the 12.5 MM Surface mix by hand in the bike lane between Sta 26+53 & Sta 27+79  
NB 14<sup>th</sup> Street NW

**PREPARED BY Kendry A. Contreras**

A handwritten signature in blue ink, appearing to read 'Kendry A. Contreras', located at the bottom right of the page.

## 1. EXECUTIVE SUMMARY

### Project Description:

The scope of the construction work includes the followings:

- The removal and disposal of existing roadway pavement, curb and gutter and sidewalks, milling of existing asphalt pavement to the extents shown on plans.
- The resurfacing of existing asphalt pavement using 2" Superpave AC surface on 14<sup>th</sup> Street between Thomas Circle and Florida Ave as shown in the plans.
- The replacement of all curbs and gutters with Granite Curbs, 12" Brick Gutter, Concrete Sidewalk, Wheelchair/Bicycle Ramps, and Cobble Stone LID Paver, Bioretention Planters as shown on the plans or as directed.
- The removal and transportation to storage yard of Existing Traffic Signals and Light Poles as shown on plans. Traffic signal relocation and equipment upgrading of Traffic Signals at all intersections of 14<sup>th</sup> Street within the project limit as shown on plans.
- Streetscaping throughout the 14<sup>th</sup> Street corridor as shown in the plans.
- The installation of traffic signing and permanent pavement markings.
- Upgrading of street lighting throughout the 14<sup>th</sup> Street corridor as shown in the plans.
- Construction and upgrading of single catch basin, double catch basin, and triple catch basin.
- Construction / Upgrading of new Watermains, Fire Hydrants
- Full Reconstruction of R Street.
- Installation of new Bus Islands and bus pads as shown on the plans and as directed.
- The installation and use of erosion and sediment control measures as required.
- Mobilization and demobilization, performance of field layout, provision and maintenance of engineer's field facilities, progress photographs, and the proper maintenance of vehicular and pedestrian traffic during construction, including provision of all required construction warning and detour signs and traffic control devices.

## 2. STATUS OF CONSTRUCTION / PROGRESS SUMMARY

### Progress Summary:

1. Continue good progress this week, with D.E.N. Omni
2. Clear Channel installed their shelter at Florida Ave
3. DEN continued restoring the SW corner of 14<sup>th</sup> and T street
4. Electricians Continue with work on Light poles and pulling cable
5. R street signal was switched over
6. FMCC electrical continue pulling fiber optic comm cable and getting signal its components
7. Began bus island work at R street Southbound, Continue with PCC Base
8. Landscapers – Cooper was back one day and install some soil, planting mix
9. Omni continue change order work at T-U block, work is progressing fast with several sticks of pipe installed
10. DCwater is not scheduling work at R street until the water valves are uncovered.

### PM Community Outreach Activities:

11. TBA personnel continues to respond to questions that come through project portal.
12. Continue working with Businesses along R St. block. Red light Bar, Sette Osteria
13. Good PR team effort to keep and report the affecting communities the water night work. Night work was successful with only minor call to complains

**3. QC/ ISSUES / ACTION ITEMS**

- Contractor used an unapproved concrete mix. Payment will be withheld for that item until the mix is submitted and approved. Mixes are currently with DDOT QC material for their review
- Bus Island at Florida completed. Clear channel installed their shelter. Ellisdale wants to mobilize back
- DCwater still has two more tie-in to complete the intersection. One at night and one during daytime. They will not schedule anything until the shut-off valves are located and uncovered (paved over). This will cause a delay to the critical path that runs on R street intersection.
- Multiple areas are unfinished that prevents the landscapers from completing their work (i.e. Cobble stone, PCC sidewalk, light pole and foundations).
- PEPCO has all power feeds done. All traffic signal except for Florida done. FMCC missed a duct bank they need to install first. See bullet point below
- Comm conduit beyond Florida Ave. is full of sand. Harvey (DDOT signal) is aware of the issue.
- FMCC didn't installed duct bank at Florida Ave. They need to go back and install it
- FMCC has slowed down significantly now that they have the time extension sense of urgency seemed to have disappeared
- Water work tie-waiting to locate the switch off valves (they were paved over by FMCC)
- Non Conformance notice.- Found multiple locations were DEN didn't installed geogrid/ stone under the cobblestone.
- Non Conformance notice.- D.E.N. not provided positive drainage at SW corner of T and 14<sup>th</sup> street

**ACTION ITEMS.-**

Action	Description	Action By	Original Date	Expected Date	Status
001	Address the MOT, safety issues within the corridor.	FMCC/Kevin Felix	June 5, 2019	January 21, 2020	Ongoing
002	Provide written document showing the potential danger with the installation of the handles for the grate placed IFO Cleaners at 1329 14 <sup>th</sup> Street	FMCC/Cesar Casanova	July 30, 2019	January 21, 2020	Ongoing
003	Schedule a meeting with the 1520 14 <sup>th</sup> Street owner for FMCC to present their options.	Jerrell Johnson	July 30, 2019	January 10, 2020	Ongoing
004	Mr. Said Chestnut to contact Mr. Jermaine Quattlebaum and start punch list for DC Water work.	ATCS/Said Chestnut and DC Water/ Jermaine Quattlebaum	August 06, 2019	January 10, 2020	Ongoing
005	Schedule a meeting with IPMD for the discussion about parking meter/Zip car signs	CM Team	September 10, 2019	January 21, 2020	Ongoing
006	Get DC Water commitment for FMCC to perform the watermain relocation work	DDOT/Olusegun Olaore	December 17, 2019	January 21, 2020	Ongoing

007	Submit the submittals for FY19 Aggregate Industries Concrete Mixes Design	FMCC/Abdalla Elsheikh	January 7, 2020	January 21, 2020	New
008	Submit the RFIs for the missing MPD camera at W Street and the HAWK signal installation specs.	FMCC/Ricardo Teixeira	January 7, 2020	January 21, 2020	New
009	Provide the ITS components signed delivery ticket from DDOT.	FMCC/Ricardo Teixeira	January 7, 2020	January 21, 2020	New

#### 4. MEETINGS/ PROJECT COORDINATION

- New Progress Meeting are schedule at the Field Office every other Tuesday at 10:30am. Progress meeting this week was postponed due to the Holidays
- Correspondence with Mr Cooper, with Collection 14 developer to also address his scope. Agreed to perform everything except for the two lightpoles and Luminaires

#### 5. DAILY WORK PERFORMED

##### Monday 01/13/2020

**Cooper Enterprises:** Placed 1.0' of Planting Soil Mix at 1614, 1612, 1610, 1606, 1602. and 2216-2218 14<sup>th</sup> Street NW

**DEN:** Removed existing sidewalk and handicap ramps at the SW corner of T Street and 14<sup>th</sup> Street NW to the Entrance/Exit of Round & Board furniture store. DEN provided customer access Room & Board.

**DEN:** Pour **78.42 SY** of 4" PCC Sidewalk with 9.0 CY of DDOT Class F concrete at the SW corner of T Street and 14<sup>th</sup> Street

**DEN:** Formed and poured **2 EA** handicap ramps with 3.0 CY of DDOT Class E concrete at the NW corner of T Street & 14<sup>th</sup> Street NW

**DEN:** Performed common excavation/removed the existing sidewalk, roadway, and granite curb at the SW corner of T Street & 14<sup>th</sup> Street NW

**\*\*FMCC:** Applied tack by hand wand for the bike lane between Sta 26+53 to Sta 27+79 NB 14<sup>th</sup> Street NW

**\*\*FMCC:** Applied tack by hand wand to the bus stop pedestrian crossing with 2" of surface mix asphalt at the SE side of 14<sup>th</sup> Street NW and R Street

**FMCC:** Spread 2" of 12.5 MM surface mix 13.84 Tons Design Mix No. DCA-2016-C-0043 in the bike lane by hand and compacted on NB 14<sup>th</sup> Street NW between Sta 26+53 & Sta 27+79

**FMCC:** Spread 2" of 12.5 MM Surface mix **by hand in** the bus stop pedestrian crossing at the SE side of 14<sup>th</sup> Street NW and R Street NW

**FMCC** was onsite providing MOT devices for FMCC Civil Crew at R St and **Omni Excavators** from Wallach St to T St.

**FMCC Electrical** crew was onsite at 14<sup>th</sup> & U St installing 12 strand cable from TC8 cabinet to existing manholes EM02 & EM03. Installation of TS-32 and L86 were done including removal of temporary bases. #6 and #8 wire were installed from M08 to M02 of #8. (2) twin 20 pole globes were installed at L-61 & L-63.

**FMCC** civil crew was onsite to begin full depth roadway work near NWC of 14<sup>th</sup> & R St, with 10" PCC Base. (2) Valve casings were abandoned.

**Omni Excavators** was onsite excavating and installing (**60 LF**) of 12" D.I.P water main to offset existing main beneath Pepco duct bank.

## **Tuesday 01/14/2020**

**FMCC** was onsite providing MOT devices for FMCC Civil Crew at R St and **D.E.N.** **United** from Swann St to T St.

**FMCC Electrical** crew was onsite at 14<sup>th</sup> & T St and V St installing (8) twin 20 pole globes at L-83, L-100, L102 & L104. Programming of push buttons at Rhode Island Ave, Q St. and S St was done as well. (#10 L-92 to M111 (30 x 2) + L-91 to EM10 (65 x 2) (#8 L10 L-92 to M111 (30) + L-91 to EM10 (65

**FMCC** civil crew was onsite to begin full depth roadway work near NWC of 14<sup>th</sup> & R St, with 10" PCC Base. (2) Valve casings were abandoned. Calculations are as follows:

**Omni Excavators** was onsite excavating and installing (**40 LF**) of 12" D.I.P water main to offset existing main beneath Pepco duct bank.

## **Wednesday 01/15/2020**

**FMCC** was onsite providing MOT devices for Omni excavators at T St and FMCC Civil Crew at R St.

**Omni Excavators** was on 14<sup>th</sup> St southbound continuing installation of 12" ductile iron pipe for Pepco relocation.

**FMCC Electrical** crew was onsite at 14<sup>th</sup> & R St for turn on of permanent signals with **DDOT** technician.

**FMCC** civil crew was onsite to continue work near NWC of 14<sup>th</sup> & R St installing straight and radial granite curb for directional bus island.

**Omni Excavators** was onsite excavating and installing (**80 LF**) of 12" D.I.P water main to offset existing main beneath Pepco duct bank.

**DEN:** 4" PCC Sidewalk at the SW corner of T Street and 14<sup>th</sup> Street NW

**DEN:** Adjusted **3 EA** Manholes at the SW corner of T Street & 14<sup>th</sup> Street NW

**DEN:** Installed **127.84 LF** of 8" X 12" Granite Straight Curb at the SW corner of T Street & 14<sup>th</sup> Street NW

**DEN:** Installed 24.67 LF of 8" X 12" granite Circular Curb 10 - 100' radius at the SW corner of T Street & 14<sup>th</sup> Street NW

**DEN:** Placed borrow embankment at the SW corner at T Street & 14<sup>th</sup> Street NW

**DEN:** Placed graded aggregate base at the SW corner of T Street & 14<sup>th</sup> Street NW

**DEN:** installed 1 EA observation wells at the following location: 1317,1401, 1408, 1501,1502, 1512, 1529B, 1534, 1604, & 1610. 2000,4<sup>th</sup> Street NW **11 EA**

**DEN:** Removed existing sidewalk in front of 1828 - 1832 14<sup>th</sup> Street NW

**DEN:** Poured 4" PCC Sidewalk at 1828 – 1832 14<sup>th</sup> Street NW with 16.5 CY f DDOT Class F concrete

**DEN:** Installed 221.42 LF of Brick Gutter at the SW corner of T Street and 14<sup>th</sup> Street

### **Thursday, 01/16/2020**

**DEN:** Installed 39.50 LF Brick Gutter 1830 – 1832 14<sup>th</sup> Street NW

**DEN:** Installed geogrid which DEN didn't install initially in the permeable pacers at 2000 , 1714,1626, and 1925 14<sup>th</sup> Street MW

### **Friday, 01/17/2020**

**DEN:** Finished reinstalling the permeable pacers after installing the Geo Grid 1714 14<sup>th</sup> Street NW

**DEN:** installed permeable pacers at 2019 14<sup>th</sup> Street NW =

**DEN:** Performed Common Excavation for permeable pacers at 2019 14<sup>th</sup> Street NW

**DEN:** Placed Structural soil for permeable pacers at 2019 14<sup>th</sup> Street NW

**DEN:** poured 4" PCC sidewalk at 2019, and 2000 14<sup>th</sup> Street NW

### **Saturday, 01/18/2020**

No work

## 7.RFI's/SUBMITTALS

### 1. Requests for Information:

- To date, we have received **45** RFIs; **44** RFIs have been answered.

### 2. **Submittals:**

- We have received **87** Submittals; **86** Submittals have been Approved.
- 2019 Concrete Mix designs for Agg industries, submitted for approval

## 8. CHANGE ORDERS/TASK ORDERS

- Price breakdown for add water work received from FMCC. Tie-in were priced separately. Pepco sent letter on 12/14 accepting and taking responsibility of the CO. Sent Article 3 letter To FMCC on 12.20. Received commitment from DCwater to write Change order, in progress.

Waiting for DDOT to return executed Change order # 5

## 9. DBE or CBE PARTICIPATION SUMMARIES

3. ATCS CBE / DBE Activity:
  - Hayat Brown LLC.: Provided Office Engineering and Inspection support for this project.
  - Cube root: Provided Inspection support
  - Tina Boyd- PR and Outreach support, webpage management
4. Fort Myer Construction Corp. DBE Activity:
  - Omni Excavators Inc.
  - Den United LLC.
  - DC Line
  - Cooper landscaping
  - Long Fence
  - Capital Flexible pavement

## 10. ACCIDENTS/INCIDENT

- 1) No Accidents reported

## 11. PHOTOS OF WORK PERFORMED THIS PERIOD



DEN demoing the existing curb, sidewalk and handicap ramp at the SW corner of T Street & 14<sup>th</sup>

Street NW



DEN finishing a handicap Ramp at the SW corner of T Street & 14<sup>th</sup> Street NW



FMCC compacting the surface Mix 12.5MM in the bike lane between Sta 26+53 & Sta 27+79 NB 14<sup>th</sup> Street NW





Valve casing abandoned at R ST Intersection



FMCC demolishing full depth roadway at NWC of 14<sup>th</sup> & R St



Omni at 14<sup>th</sup> St between T St and Wallach St pipe delivered



3 20' sections of 12" ductile iron pipe placed by Omni



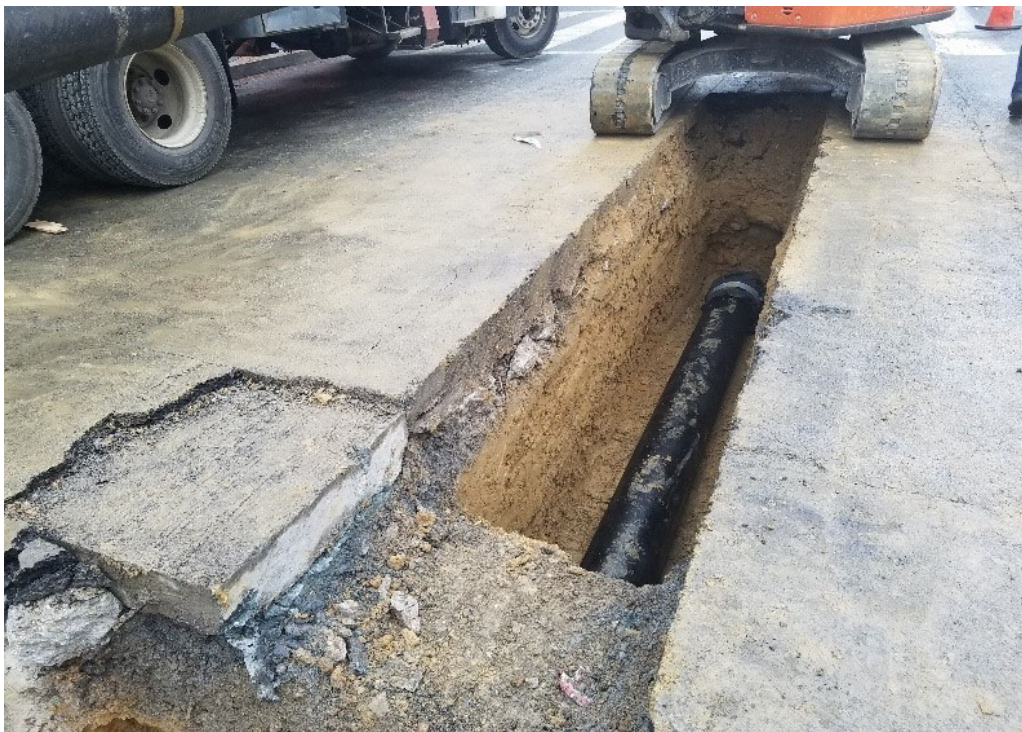
Omni excavating and exposing main at NEC of 14<sup>th</sup> & R St



inlet drain at SWC of 14<sup>th</sup> & T St



FMCC installing 3 section at L92/TS/PP



FMCC placing 12" Water main



Omni near Wallach St installing 12" D.I.P. for new water main location



Omni 12" pipe installation completed for the day.



Granite curb placement completed for the day by FMCC



FMCC repairing push button on R St



Den poring the 4" PCC Sidewalk at T Street & 14<sup>th</sup> Street NW



DEN starting to finish the 4" PCC Sidewalk at the SW corner of T Street & 14<sup>th</sup> Street NW



DEN installing the Brick Gutter at the SW corner of T Street & 14<sup>th</sup> Street NW



DEN reinstalling the permeable pavers at 1925 14<sup>th</sup> Street NW after installing the Geo Grid





DEN installing the GEO GRID at 1925 14<sup>th</sup> Street NW



DEN getting ready to place the permeable pavers at 2019 14<sup>th</sup> Street NW