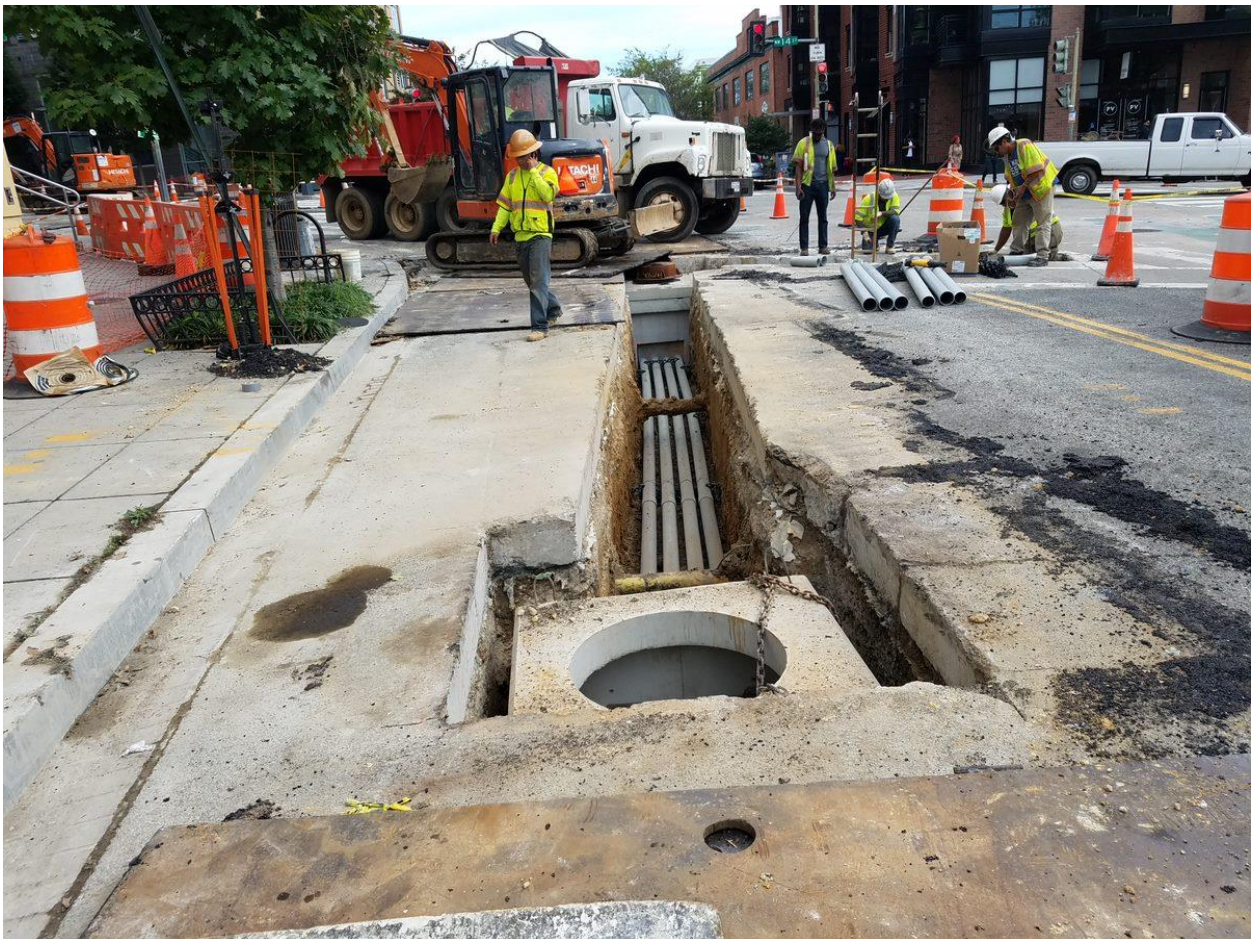


14th Street Streetscape Project N.W.
From Thomas Circle to Florida Ave
DC Contract No.: DCKA-2016-C-0043

FAP No.: STP-2016 (054)

CONSTRUCTION MANAGER'S
WEEKLY PROGRESS REPORT
10/15/2018 – 10/20/2018

Project Website: www.14thstreetproject.com



Installation of Manhole and Electrical Conduit at the NW Corner of Florida Ave and 14th Street

1. EXECUTIVE SUMMARY

Project Description:

The scope of the construction work includes the followings:

- The removal and disposal of existing roadway pavement, curb and gutter and sidewalks, milling of existing asphalt pavement to the extents shown on plans.
- The resurfacing of existing asphalt pavement using 2" Superpave AC surface on 14th Street between Thomas Circle and Florida Ave as shown in the plans.
- The replacement of all curbs and gutters with Granite Curbs, 12" Brick Gutter, Concrete Sidewalk, Wheelchair/Bicycle Ramps, and Cobble Stone LID Paver, Bioretention Planters as shown on the plans or as directed.
- The removal and transportation to storage yard of Existing Traffic Signals and Light Poles as shown on plans. Traffic signal relocation and equipment upgrading of Traffic Signals at all intersections of 14th Street within the project limit as shown on plans.
- Streetscaping throughout the 14th Street corridor as shown in the plans.
- The installation of traffic signing and permanent pavement markings.
- Upgrading of street lighting throughout the 14th Street corridor as shown in the plans.
- Construction and upgrading of single catch basin, double catch basin, and triple catch basin.
- Construction / Upgrading of new Watermains, Fire Hydrants
- Full Reconstruction of R Street.
- Installation of new Bus Islands and bus pads as shown on the plans and as directed.
- The installation and use of erosion and sediment control measures as required.
- Mobilization and demobilization, performance of field layout, provision and maintenance of engineer's field facilities, progress photographs, and the proper maintenance of vehicular and pedestrian traffic during construction, including provision of all required construction warning and detour signs and traffic control devices.

Work by Others

The PEPCO manhole replacement or vault adjustments activities will be done by others approved by PEPCO. The ATCS CM team will coordinate all these activities with the Contractor and PEPCO.

2. STATUS OF CONSTRUCTION / PROGRESS SUMMARY

Progress Summary:

1. Omni onsite excavating and installing electrical conduits and manholes
2. Omni demo and removing Foundations
3. Omni excavating and installing Street Light and Traffic Signal Foundations
4. FMCC Electrical Installing Transfer Bases
5. FMCC onsite providing MOT for Subcontractors

CM Community Outreach Activities

1. Connected with retailers and property owners in project corridor to provide updates and address any questions or concerns.
2. Project Website is up and running. Responded to email questions that came through Project Website.

3. ISSUES / ACTION ITEMS

- Ongoing Issues / Items: Bus Shelter Installation, PEPCO Manhole conflicts, R/W issue at 14th and S Street

- New Issues / Items:
- Action Items: Pepco working on conflicts (approx. 26) and give CM a report on time frame for design and corrections.
- Spoke with Carla Longshore from DDOT TDD. Need to reach back out to get assistance with Clear Channel and getting the Street Car Shelters

4. MEETINGS / PROJECT COORDINATION

Progress Meeting are schedule at the Field Office every Tuesday at 10:30am

5. DAILY WORK PERFORMED

Monday 10/15/2018

1. Contractor cancelled activities due to inclement weather

Tuesday 10/16/2018

1. Omni continued to excavate and install 4" PVC conduit between MH-103 to MH-101, MH-101 to MH-104
2. Omni installed two (2) Manhole MH-103, and MH-101
3. Omni Test pitted for MH-109
4. FMCC was onsite providing MOT for these operations

Wednesday 10/17/2018

1. Omni continued to excavate and install 4" PVC Conduit MH-104 to L22, MH-101 to MH-104, MH-101 to MH-100
2. Omni excavated and installed two (2) manholes MH-104, and MH-109
3. Omni placed backfill and 6" of aggregate base material between MH-101 to MH-103
4. FMCC was onsite providing MOT for these operations

Thursday 10/18/2018

1. Omni continued to excavate and install 4" PVC Conduit between MH-109 to MH-100
2. Omni backfilled the trench and placed temporary asphalt over the trench
3. FMCC was onsite providing MOT for these operations

Friday 10/19/2018

1. Omni installed and encased 4" PVC Conduit between MH-109 to MH-100, MH-03 to P01, P01 to TC-1, MH-03 to TC-1
2. Omni removed the existing Traffic Signal Foundation for TC-1
3. FMCC Electrical installed a Transformer Base at 14th and Rhode Island Ave
4. FMCC was onsite providing MOT for These operations

Saturday 10/20/2018

1. Contractor did not request to work

6. INSPECTION & MATERIAL TESTS PERFORMED

- N/A

7. RFI's / SUBMITTALS

- Requests For Information:
 - o We have received 12 RFIs; 11 RFIs have been answered.
- Submittals:
 - o We have received 66 Submittals; 63 Submittals have been Approved

8. CHANGE ORDERS/TASK ORDERS

- o None

9. DBE or CBE PARTICIPATION SUMMARIES

- ATCS CBE / DBE Activity:
 - o Hayat Brown LLC.: Provided Office Engineering support for this project.
- ATCS CBE / DBE Activity
 - o Cube Root, Corp.: Providing an Electrical Inspector to support the project.
- Fort Myer Construction Corp. DBE Activity:
 - o Omni Excavators Inc.

10. ACCIDENTS / INCIDENTS

- None

11. PHOTOS OF WORK PERFORMED THIS PERIOD



Excavating for Electrical Trench at 14th and Florida Ave



Compaction of material around manhole on Westside of Florida Ave and 14th Street



Placing Temporary Asphalt over Electrical Trench at 14th and Florida Ave



QA/QC compaction testing of Aggregate Base Material at 14th and Florida Ave



Installation of the Transformer Bases onto New Traffic Signal / Pendent Poles



Placement of PCC Base on the Westside of Florida Ave