

**14th Street Streetscape Project N.W. From
Thomas Circle to Florida Ave
DC Contract No.: DCKA-2016-C-0043**

FAP No.: STP-2016 (054)

**CONSTRUCTION MANAGER'S
WEEKLY PROGRESS REPORT
12/29/2019 - 01/04/2020**

Project Website: www.14thstreetproject.com



Bus island at 14th and Florida Southbound , concrete under the shelter was finished

PREPARED BY Kendry A. Contreras

1. EXECUTIVE SUMMARY

Project Description:

The scope of the construction work includes the followings:

- The removal and disposal of existing roadway pavement, curb and gutter and sidewalks, milling of existing asphalt pavement to the extents shown on plans.
- The resurfacing of existing asphalt pavement using 2" Superpave AC surface on 14th Street between Thomas Circle and Florida Ave as shown in the plans.
- The replacement of all curbs and gutters with Granite Curbs, 12" Brick Gutter, Concrete Sidewalk, Wheelchair/Bicycle Ramps, and Cobble Stone LID Paver, Bioretention Planters as shown on the plans or as directed.
- The removal and transportation to storage yard of Existing Traffic Signals and Light Poles as shown on plans. Traffic signal relocation and equipment upgrading of Traffic Signals at all intersections of 14th Street within the project limit as shown on plans.
- Streetscaping throughout the 14th Street corridor as shown in the plans.
- The installation of traffic signing and permanent pavement markings.
- Upgrading of street lighting throughout the 14th Street corridor as shown in the plans.
- Construction and upgrading of single catch basin, double catch basin, and triple catch basin.
- Construction / Upgrading of new Watermains, Fire Hydrants
- Full Reconstruction of R Street.
- Installation of new Bus Islands and bus pads as shown on the plans and as directed.
- The installation and use of erosion and sediment control measures as required.
- Mobilization and demobilization, performance of field layout, provision and maintenance of engineer's field facilities, progress photographs, and the proper maintenance of vehicular and pedestrian traffic during construction, including provision of all required construction warning and detour signs and traffic control devices.

2. STATUS OF CONSTRUCTION / PROGRESS SUMMARY

Progress Summary:

1. Slow week due to Holiday restrictions (12/31 and 01/01)
2. FMCC began work at the Bus island. Install Curb and Gutter
3. DEN Pulled out of the job not coming back until 01/13/2020
4. Electricians Continue with work on Light poles and pulling cable
5. No progress on signal work.
6. FMCC electrical continue pulling fiber optic comm cable and getting signal its components
7. Verizon moving the two manholes near R street, mobilize back form the top of slab waiting to finish the concrete slab.
8. Landscapers- Cooper continue demobilized
9. Omni completing and back filing the storm drain at the SW corner of T and 14th Street
10. No progress for water tie-in, DCwater don't want to shut off water during the Holidays
11. Flexible pavement installed @ various areas
12. More benches and trash bin were installed

CM Community Outreach Activities:

13. TBA personnel continues to respond to questions that come through project portal.
14. Continue working with Businesses along R St. block. Red light Bar, Sette Osteria
15. Good PR team effort to keep and report the affecting communities the water night work

16. Meeting with Ellisdale developer

3. QC/ ISSUES / ACTION ITEMS

- Subcontractor is repairing the planters.
- Contractor used an unapproved concrete mix. Payment will be withheld for that item until the mix is submitted and approved.
- Bus Island at Florida continues
- Work by Omni is now part of the critical work, more resources are needed, storm drain going too slow
- DCwater is trying to schedule the South West corner tie-in but can only do it on Sunday and Monday because of restaurant. DC water decided to not do shutdown during the Holidays this will cause a delay to the critical path that runs on R street intersection.
- Coordinating with Verizon for their manhole offset near R street ongoing.
- Multiple areas are unfinished that prevents the landscapers from completing their work (i.e. Cobble stone, PCC sidewalk, light pole and foundations).
- Omni working too slow is impacting other activities at R street
- PEPCO has all power feeds done. All traffic signal except for Florida done. FMCC missed a duct bank they need to install first. See bullet point below
- Comm conduit beyond Florida Ave. is full of sand. Harvey (DDOT signal) is aware of the issue.
- FMCC didn't installed duct bank at Florida Ave. They need to go back and install it
- FMCC has slowed down significantly now that they have the time extension sense of urgency seemed to have disappeared
- Water work tie-waiting to locate the switch off valves (they were paved over by FMCC)

ACTION ITEMS.-

Action	Description	Action By	Original Date	Expected Date	Status
001	Address the MOT, safety issues within the corridor.	FMCC/Kevin Felix	June 5, 2019	December 31, 2019	Ongoing
002	Provide written document showing the potential danger with the installation of the handles for the grate placed IFO Cleaners at 1329 14 th Street	FMCC/John Constantino/Cesar Casanova	July 30, 2019	December 31, 2019	Ongoing
003	Schedule a meeting with the 1520 14 th Street owner for FMCC to present their options.	Jerrell Johnson	July 30, 2019	December 31, 2019	Ongoing
004	Mr. Said Chestnut to contact Mr. Jermaine Quattlebaum and start punch list for DC Water work.	ATCS/Said Chestnut and DC Water/ Jermaine Quattlebaum	August 06, 2019	December 31, 2019	Ongoing
005	Schedule a meeting with IPMD for the discussion about parking meter/Zip car signs	CM Team	September 10, 2019	December 31, 2019	Ongoing
006	Provide an exact number of parking meter, benches and bike racks were	FMCC/John Constantino	December 3, 2019	December 31, 2019	Ongoing

	to be installed where Collection 14 and Ellisdale were working on.				
007	Research who owns the blue historical signs.	Jerrell Johnson	December 3, 2019	December 31, 2019	Ongoing
008	Get DC Water commitment for FMCC to perform the watermain relocation work	DDOT	December 17, 2019	December 31, 2019	New
009	Submit an RFI for the removal of the Termination Cabinets	FMCC/Ricardo Teixeira	December 17, 2019	December 31, 2019	New
010	Submit the submittals for FY19 Concrete Mixes Design	CM Team/Dang Nguyen	December 17, 2019	December 31, 2019	New
011	FMCC to sign the revised modification of contract with language change for CO-5 Extension OH Items Change Order	FMCC/Cesar Casanova	December 17, 2019	December 31, 2019	New
012	Schedule meeting with Mrs. Kerri (Culture DC) to explain the location of handrail	CM team/ Jerrell Johnson	December 17, 2019	December 31, 2019	New

4. MEETINGS/ PROJECT COORDINATION

- New Progress Meeting are schedule at the Field Office every other Tuesday at 10:30am. Progress meeting this week was postponed due to the Holidays
- Winmar developer and Ellisdale developer has been coordinating with the project to provide access
- Meeting with Ellisdale on 12/23 to resolved scope and what will be part of their restoration effort
- Schedule a meeting with Collection 14 developer to also address his scope

5. DAILY WORK PERFORMED

Monday 12/30/2019

FMCC installed (1) EA Park Bench at 1321 14th Street NW

FMCC removed existing litter baskets between Thorn Circle and R Street on NB 14th Street NW
FMCC was onsite providing MOT devices for Omni excavators at T St and FMCC Civil Crew at R St and Florida Avenue.

Omni Excavators continued working at SWC of 14th & T St excavating for signal pole and light pole foundations.

FMCC Electrical crew was onsite at 14th & Q St installing #6 and #8 cable and wired up new traffic cabinet while disconnecting previously installed cabinet and connections as well. #6

FMCC civil crew was onsite to continue work near SEC of 14th & Florida Ave, and SWC of 14th & Fla. Ave completing directional bus island near bus shelter and repair area with 10" PCC

Base and completion of concrete work at SEC of 14th & R St bus island nose. (1) Sewer manhole was adjusted at SEC of R St as well.

Tuesday 12/31/2019

FMCC: Removed existing litter baskets from R Street to Florida Ave and Northbound 14th Street NW and from Florida Ave to S Street on Southbound 14th Street NW

Omni Excavated for a foundation on the Southwest corner of T Street & and southbound 14th Street NW. The pit excavated for the foundation was saved up with a metal plate and the area was surrounded by water filled barrier wall and cones.

Wednesday 01/01/2020

New year's day no work

Thursday, 01/02/2020

FMCC was onsite providing MOT devices for Omni excavators at T St and FMCC Civil Crew at R St and Florida Avenue.

Omni Excavators installed traffic signal pole foundation TS-53 at SEC of 14th & Fla Ave and PVC conduit (1-2" & 1-4") from electric manhole M108 (29 LF).

FMCC Electrical crew was onsite at 14th & Wallach St installing 1-28' pendant pole (L-91) with 8' Arm and teardrop fixture. Ground rods were installed as well. 1 pedestrian signal with mast arm was installed as well at L-91.

FMCC civil crew was onsite to continue work near SEC of 14th & Florida Ave installing straight and radial granite curb for directional bus island.

Omni: Installed **25 LF** of 2" & 4" PVC conduit between the proposed manhole R62 and the proposed foot light pole foundation at the SW corner of T Street and 14th Street NW.

Omni: Installed **17 LF** of 2" & 4" PVC conduit between the proposed manhole R62 and the proposed traffic signal foundation at the SW corner of T Street and 14th Street NW.

Omni: Incased the 2" & 4" PVC conduit in concrete between manhole R62 and the light pole and traffic signal foundations with the 7.0 CY of Class B concrete

Omni: Formed, installed the rebar cage, and poured the light pole foundation and traffic signal foundation at the SW corner of T Street and 14th Street NW.

Omni: purged manholes between S Street and Florida Ave on NB & SB 14th S Street NW

Friday, 01/03/2020

Omni: Backfilled the pipe trenches for the traffic signal/light poles and placed with two loads/ t11.71 tons of graded aggregate base material on the southwest corner of T Street & 14th Street NW.

Omni: Placed approximately 2" of cold patch asphalt to restore the sidewalk over the pipe trenches for the traffic signal/light poles on the southwest corner of T Street & 14th Street NW

Omni: Installed the inlet top on storm drainage structure at the Southwest corner of T Street & 14th Street NW

Omni: Purged manholes on SB 14th Street NW between T Street and P Street

Capital Flexi Pave: Installed porous flexible pavement 2005/2007 NB 14th Street NW

FMCC was onsite providing MOT devices for Omni excavators at T St and FMCC Civil Crew at R St and Florida Avenue.

Omni Excavators installed hand box HB15 at SEC of 14th & Fla Ave and PVC conduit (1-2") from electric manhole M108 (**26 LF**).

FMCC civil crew was not onsite due to incoming inclement weather

Saturday, 01/04/2020

FMCC was onsite providing MOT devices for Omni excavators.

Omni Excavators was onsite and catch basins from N St to T St draining water from catch basins and parping pipe connections at basin water seal and sewer manhole.

7. RFI's/SUBMITTALS

1. Requests for Information:

- To date, we have received **39** RFIs; **39** RFIs have been answered.

2. Submittals:

- We have received **86** Submittals; **86** Submittals have been Approved.
- 2019 Concrete Mix designs for Agg industries, waiting to be submitted

8. CHANGE ORDERS/TASK ORDERS

- FMCC to revise overhead cost (field office, MOT...) change order for 6 month contract extension. Received breakdown, FT Myers Accepted counteroffer, with DDOT to provide executed change order
- Receive ATCS MOD 3 Additional funding to continue inspection services through March
- Price breakdown for add water work received from FMCC. Tie-in were priced separately. Pepco sent letter on 12/14 accepting and taking responsibility of the CO. Sent Article 3 letter To FMCC on 12.20. Waiting for commitment from DCwater to write Change order

9. DBE or CBE PARTICIPATION SUMMARIES

3. ATCS CBE / DBE Activity:

- Hayat Brown LLC.: Provided Office Engineering and Inspection support for this project.
- Cube root: Provided Inspection support

- 4. Fort Myer Construction Corp. DBE Activity:
 - Omni Excavators Inc.
 - Den United LLC.
 - DC Line
 - Cooper landscaping
 - Long Fence
 - Capital Flexible pavement

10. ACCIDENTS/INCIDENT

- 1) PEPCO vault was damaged at Florida and 14th Street by FMCC with their hoe ram and excavator. Pepeco was notified.

11. PHOTOS OF WORK PERFORMED THIS PERIOD



Omni Excavation at a foundation at the southwest corner of T Street & 14th Street NW



FMCC crew preparing to remove an existing Litter Basket from the northwest corner of T Street & 14th Street NW



Demolition underway by FMCC at SEC of 14th & Fla. Ave



Ramhoe used by FMCC during demolition



PCC Base repair at SEC of 14th & R St



SEC of 14th & R St walkway w/ PCC Base repair



Truncated dome surface placed at walkway between bus island



FMCC electrical crew working at 14th & Q St



Omni finishing the traffic signal foundation at the corner of T Street & 14th Street NW



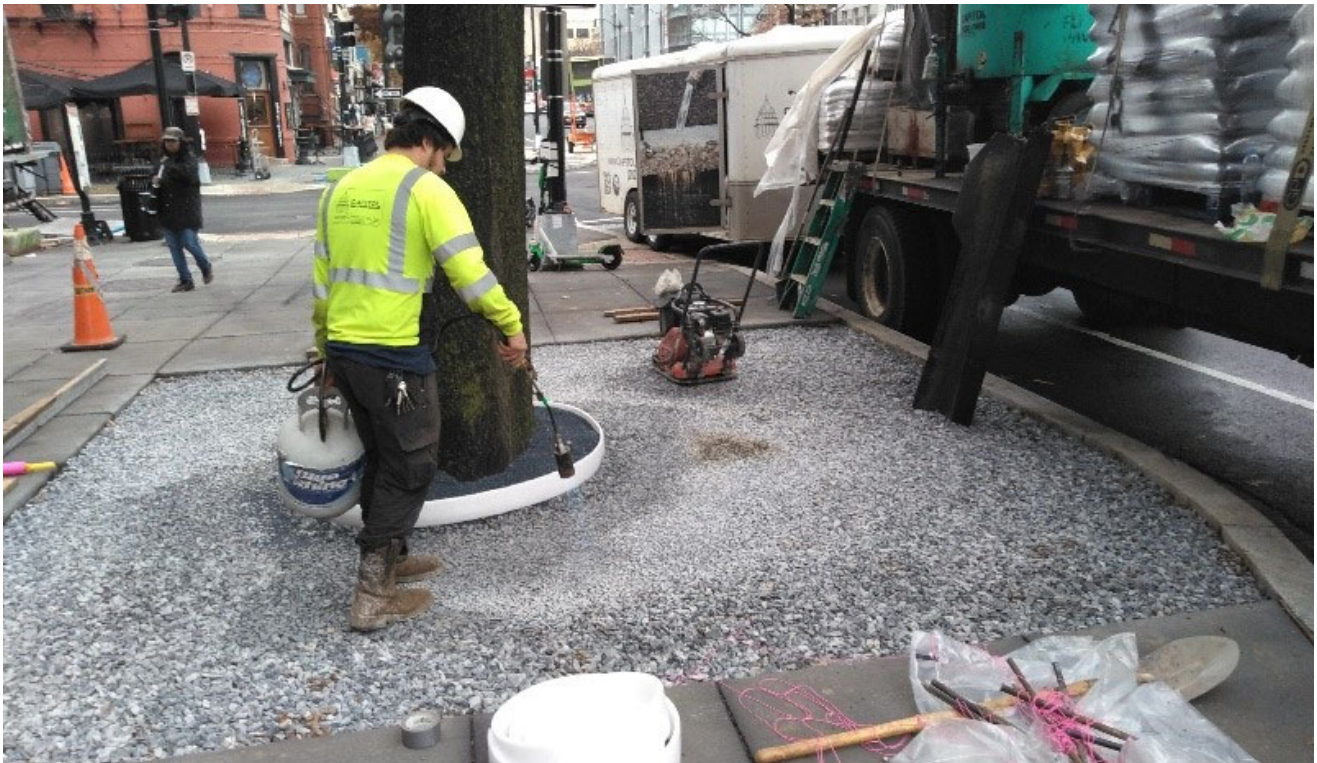
The traffic signal/light pole foundation and the conduits were encased in concrete at T Street and 14th Street NW



Omni forming the footer for the traffic signal/light pole at T Street & 14th Street NW



Omni installing rebar cage into the traffic signal/light pole foundation on the Southwest corner of T Street and 14th Street NW



Capital Flexi Pave drying out the No.57 stone prior to placing the porous flexible pavement



Capital Flexi Pave placing the porous flexible pavement



Omni installed the inlet top on the drainage structure at the southwest corner of T Street & 14th Street NW



Teardrop fixture installed at L-91



Forming of traffic signal foundation TS-53 at SEC of 14th & Fla. Ave by Omni



FMCC grading bus island subgrade at SEC of 14th & Fla Ave



Hand box HB15 and conduit installed by Omni Excavators



Omni Excavators working at NWC of 14th & N St parking pipe connections and draining catch basin