

14th Street Streetscape Project N.W.
From Thomas Circle to Florida Ave
DC Contract No.: DCKA-2016-C-0043

FAP No.: STP-2016 (054)

CONSTRUCTION MANAGER'S
WEEKLY PROGRESS REPORT
1/07/2018 – 1/12/2019

Project Website: www.14thstreetproject.com



Building Brick Combine Sewer Manhole across from 14th and Swann

1. EXECUTIVE SUMMARY

Project Description:

The scope of the construction work includes the followings:

- The removal and disposal of existing roadway pavement, curb and gutter and sidewalks, milling of existing asphalt pavement to the extents shown on plans.
- The resurfacing of existing asphalt pavement using 2" Superpave AC surface on 14th Street between Thomas Circle and Florida Ave as shown in the plans.
- The replacement of all curbs and gutters with Granite Curbs, 12" Brick Gutter, Concrete Sidewalk, Wheelchair/Bicycle Ramps, and Cobble Stone LID Paver, Bioretention Planters as shown on the plans or as directed.
- The removal and transportation to storage yard of Existing Traffic Signals and Light Poles as shown on plans. Traffic signal relocation and equipment upgrading of Traffic Signals at all intersections of 14th Street within the project limit as shown on plans.
- Streetscaping throughout the 14th Street corridor as shown in the plans.
- The installation of traffic signing and permanent pavement markings.
- Upgrading of street lighting throughout the 14th Street corridor as shown in the plans.
- Construction and upgrading of single catch basin, double catch basin, and triple catch basin.
- Construction / Upgrading of new Watermains, Fire Hydrants
- Full Reconstruction of R Street.
- Installation of new Bus Islands and bus pads as shown on the plans and as directed.
- The installation and use of erosion and sediment control measures as required.
- Mobilization and demobilization, performance of field layout, provision and maintenance of engineer's field facilities, progress photographs, and the proper maintenance of vehicular and pedestrian traffic during construction, including provision of all required construction warning and detour signs and traffic control devices.

Work by Others

The PEPCO manhole replacement or vault adjustments activities will be done by others approved by PEPCO. The ATCS CM team will coordinate all these activities with the Contractor and PEPCO.

2. STATUS OF CONSTRUCTION / PROGRESS SUMMARY

Progress Summary:

1. Omni onsite excavating and installing electrical conduits and manholes
2. Omni is excavating and installing Traffic Signal and Street Light Foundations
3. Omni excavating and installing Catch Basins and Sewer Manholes
4. Omni excavating and install new water main for DC Water
5. DEN installing Granite Curb and Brick Gutter
6. DEN demoing and installing PCC Sidewalk
7. DEN installing Permeable Pavers (Granite Cobble Stones)
8. FMCC Electrical Installing Traffic Signal Poles, Transformer Bases, Traffic Control Cabinets, and Pendent Poles
9. FMCC onsite providing MOT for Subcontractors

CM Community Outreach Activities

1. Connected with retailers and property owners in project corridor to provide updates and address any questions or concerns.
2. Project Website is up and running. Responded to email questions that came through Project Website.

3. ISSUES / ACTION ITEMS

- Ongoing Issues / Items: Bus Shelter Removal, PEPCO Manhole conflicts

- New Issues / Items: ADA Building Entrance Ramp at 1541 14th Street NW

- Action Items: Pepco working on conflicts (approx. 9) and to give CM a report on time frame for design and corrections.

- Clear Channel provide a cost for removal, request a detail breakdown of cost

- Building owner does not want ramp that was built per plan as they have step inside building. Request removal.

4. MEETINGS / PROJECT COORDINATION

Progress Meeting are schedule at the Field Office every Tuesday at 10:30am

5. DAILY WORK PERFORMED

Monday 1/07/2019

1. Omni excavated and installed Catch Basin # 23
2. Omni placed Aggregate Base material in the electrical trenches between C62 to L99, C64 to L101, MH84 to L103
3. Omni removed Streetcar Tracks between MH79 to MH77
4. DEN continued to replace and install PCC Sidewalk, Granite Curb, and Brick Gutter between P Street and Q Street
5. DEN began excavation for the Bump out at Church Street
6. FMCC was onsite providing MOT for these operations

Tuesday 1/08/2019

1. Omni excavated and installed manhole (MH-79)
2. Omni continued to install 2" and 4" PVC Conduit between MH79 to MH77, MH79 to T38, MH79 to TS39, MH79 to HB12
3. Omni excavated and installed the 15" PCC Connection pipe for catch basin # 23, and #27
4. Omni excavated and installed Catch Basin # 27 (14th and T Street)
5. DEN continued to install Granite Curb and Brick Gutter between P Street and Q Street, and at the bump out of Church Street
6. FMCC was onsite providing MOT for these operations

Wednesday 1/09/2019

1. DEN continued with the installation of PCC Sidewalk, Granite Curb, Brick Gutter, and Cobble Stone between P Street and Q Street on the Eastside
2. Omni placed Class E concrete as PCC base between C62 to L99, C64 to L101, MH84 to L103 after aggregate base material was tested and approved
3. FMCC was onsite providing MOT for these operations

Thursday 1/10/2019

1. Omni placed aggregate base and PCC Base over electrical trench between MH79 to MH77
2. Omni excavated and installed 2" and 4" PVC Conduit between MH81 to TEC4, MH81 to MH82, MH80 to MH81
3. Omni excavation and installing 8" water main upgrade on T Street
4. DEN continued with PCC Sidewalk, Granite Curb and Brick Gutter installation between Q Street and Church Street on the Eastside
5. FMCC electrical was onsite installing Temporary Traffic Signals at the intersection of 14th and V Street
6. FMCC was onsite providing MOT for these operations

Friday 1/11/2019

1. Omni continue with the electrical trench installing 2" and 4" PVC conduit at 14th and U Street
2. Omni placed aggregate base and PCC Base over electrical trench between MH81 to MH77, C63 to L100
3. Omni excavated and poured four (4) Street Light / Traffic Signal Foundations
4. Omni excavated and installed Catch Basin # 36
5. Omni continue to work on the water main upgrade on T Street
6. FMCC was on site providing MOT

Saturday 1/12/2019

1. Omni removed Streetcar Track at the intersection of 14th and U Street
2. Omni began placing backfill over the upgraded water main work at T Street
3. Omni began building the Combined Sewer manhole (MH12) across from 14th and Swann

6. INSPECTION & MATERIAL TESTS PERFORMED

- None

7. RFI's / SUBMITTALS

- Requests For Information:
 - o We have received 17 RFIs; 14 RFIs have been answered.
- Submittals:
 - o We have received 72 Submittals; 71 Submittals have been Approved

8. CHANGE ORDERS/TASK ORDERS

- o CM Task Order Modification submitted to DDOT for time extension was approved

9. DBE or CBE PARTICIPATION SUMMARIES

- ATCS CBE / DBE Activity:
 - o Hayat Brown LLC.: Provided Office Engineering support for this project.
- ATCS CBE / DBE Activity

- Cube Root, Corp.: Providing an Electrical Inspector to support the project.
- Fort Myer Construction Corp. DBE Activity:
 - Omni Excavators Inc.
 - Den United LLC.

10. ACCIDENTS / INCIDENTS

- None
-

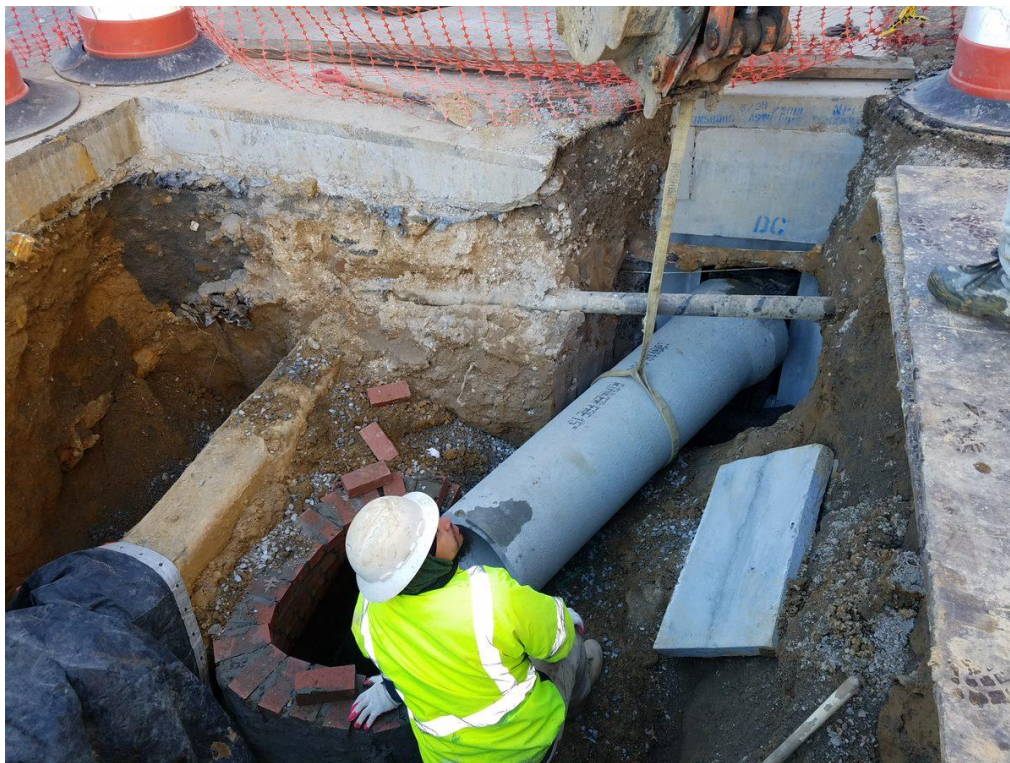
11. PHOTOS OF WORK PERFORMED THIS PERIOD



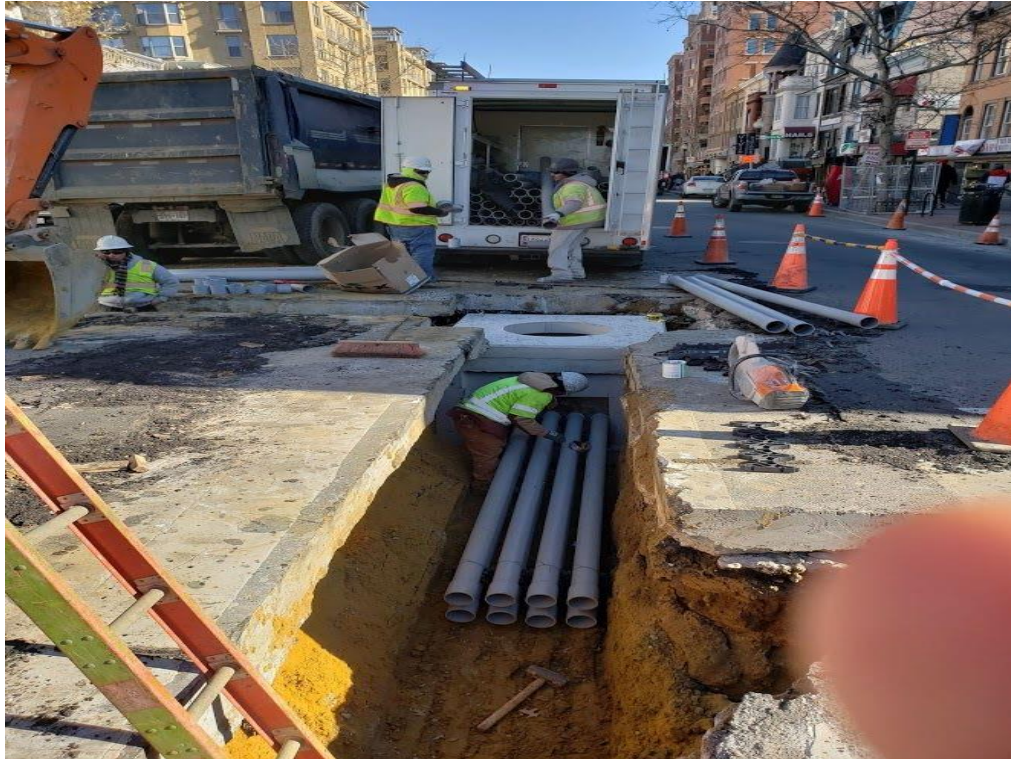
PCC Sidewalk Replacement between Q Street and Church Street



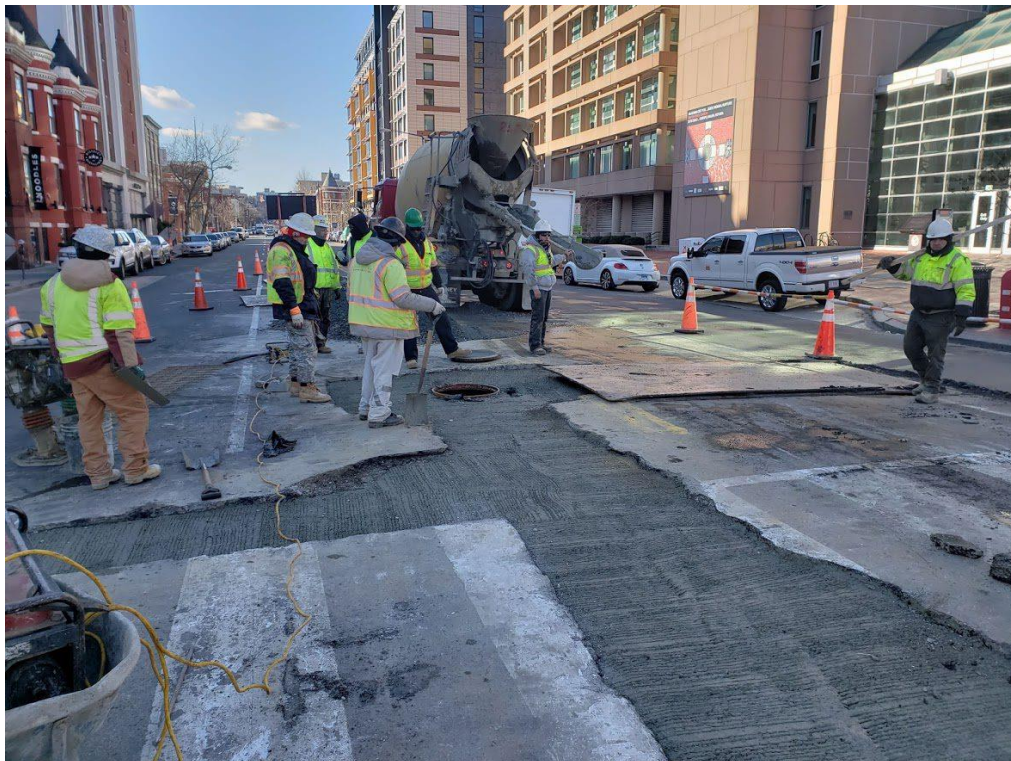
Installation of 8" Water Main on T Street on Westside



Installation of 15" PCC connection Pipe across from 14th and Swann



Installation of 4" PVC Conduit at the 14th and U Street



Installation PCC base over Electrical Conduit Trench at 14th and U Street



Removal of Streetcar Tracks at 14th and u Street



Backfill over 8" Water Main on T Street Westside