

14<sup>th</sup> Street Streetscape Project N.W. From  
Thomas Circle to Florida Ave  
DC Contract No.: DCKA-2016-C-0043

FAP No.: STP-2016 (054)

---

**CONSTRUCTION MANAGER'S  
WEEKLY PROGRESS REPORT**  
02/09/2019 - 02/15/2020

---

Project Website: [www.14thstreetproject.com](http://www.14thstreetproject.com)



Cutting at existing 6" & 12" main

**PREPARED BY Kendry A. Contreras**

## 1. EXECUTIVE SUMMARY

### Project Description:

The scope of the construction work includes the followings:

- The removal and disposal of existing roadway pavement, curb and gutter and sidewalks, milling of existing asphalt pavement to the extents shown on plans.
- The resurfacing of existing asphalt pavement using 2" Superpave AC surface on 14<sup>th</sup> Street between Thomas Circle and Florida Ave as shown in the plans.
- The replacement of all curbs and gutters with Granite Curbs, 12" Brick Gutter, Concrete Sidewalk, Wheelchair/Bicycle Ramps, and Cobble Stone LID Paver, Bioretention Planters as shown on the plans or as directed.
- The removal and transportation to storage yard of Existing Traffic Signals and Light Poles as shown on plans. Traffic signal relocation and equipment upgrading of Traffic Signals at all intersections of 14<sup>th</sup> Street within the project limit as shown on plans.
- Streetscaping throughout the 14<sup>th</sup> Street corridor as shown in the plans.
- The installation of traffic signing and permanent pavement markings.
- Upgrading of street lighting throughout the 14<sup>th</sup> Street corridor as shown in the plans.
- Construction and upgrading of single catch basin, double catch basin, and triple catch basin.
- Construction / Upgrading of new Watermains, Fire Hydrants
- Full Reconstruction of R Street.
- Installation of new Bus Islands and bus pads as shown on the plans and as directed.
- The installation and use of erosion and sediment control measures as required.
- Mobilization and demobilization, performance of field layout, provision and maintenance of engineer's field facilities, progress photographs, and the proper maintenance of vehicular and pedestrian traffic during construction, including provision of all required construction warning and detour signs and traffic control devices.

## 2. STATUS OF CONSTRUCTION / PROGRESS SUMMARY

### Progress Summary:

1. Bad weather tampered effort. Three days lost for rainy weather
2. DEN demobilized from the jobsite
3. Electricians continue with work on Light poles and pulling cable, U street and Florida Avenue
4. Electricians Install hawk Signal at Wallach
5. Omni completed tie in west side of R street (night work)
6. Omni install ped pole foundation at Island
7. Traffic Signal Switchover at Florida Avenue
8. FMCC electrical continue pulling fiber optic comm cable and getting signal its components
9. Landscapers – Off site
10. DCI installed Multimeter Parking along the corridor
11. Omni continue change order work at T-U block, layout for tie-in
12. Repairs to existing damaged PEPCO vault near Florida (Vault damaged during construction of Island by FMCC) Completed except for one precast piece in back order

**PM Community Outreach Activities:**

- 13. TBA personnel continues to respond to questions that come through project portal.
- 14. Continue working with Businesses along R St. block. Red light Bar, Sette Osteria
- 15. Good PR team effort to keep and report the affecting communities the water night work. Night work was successful no complains reported

**3. QC/ ISSUES / ACTION ITEMS**

- Bus Island at Florida completed. Ellisdale opened the island location so FMCC can repair the damaged vault roof. Commitment to finish this week. Area will be returned to Ellisdale on Tuesday 02/18/2020
- DCwater still has two more tie-in to complete the intersection. One at night (T-U) and one during daytime (48”).
- Multiple areas are unfinished that prevents the landscapers from completing their work (i.e. Cobble stone, PCC sidewalk, light pole and foundations).
- Comm conduit beyond Florida Ave. is full of sand. Harvey (DDOT signal) is aware of the issue.
- FMCC has slowed down significantly now that they have the time extension sense of urgency seemed to have disappeared
- Streetlights and temporary blocks still need to be removed

**ACTION ITEMS. -**

Action	Description	Action By	Original Date	Expected Date	Status
001	Address the MOT, safety issues within the corridor.	FMCC/Kevin Felix	June 5, 2019	February 18, 2020	Ongoing
002	Provide written document showing the potential danger with the installation of the handles for the grate placed IFO Cleaners at 1329 14 <sup>th</sup> Street	FMCC/Cesar Casanova	July 30, 2019	February 18, 2020	Ongoing
003	Provide a schedule for the granite repair work at 1520 14 <sup>th</sup> Street.	FMCC/DEN	July 30, 2019	February 18, 2020	Ongoing
004	Mr. Said Chestnut to contact Mr. Jermaine Quattlebaum and continue the punch list for DC Water work.	ATCS/Said Chestnut and DC Water/ Jermaine Quattlebaum	August 06, 2019	February 18, 2020	Ongoing
005	Schedule a meeting with IPMD for the discussion about parking meter/Zip car signs	CM Team/Kendry Contreras	September 10, 2019	February 18, 2020	Ongoing
006	Discuss internally for the potential submittal for the glare shield of the 100W post tops.	DDOT/CM Team	January 21, 2020	February 18, 2020	Ongoing
007	Submit the price proposal for removal and reinstall of the blue historical signs	FMCC/Abdalla Elsheikh	January 21, 2020	February 18, 2020	Ongoing

008	Submit a price difference for the HAWK signal	FMCC/Ricardo Teixeira	February 4, 2020	February 18, 2020	New
009	Initiate a meeting with Harvey group to address the issue with the communication cable.	CM Team/Kendry Contreras	February 4, 2020	February 18, 2020	New
010	Initiate a meeting with UFA/FMCC to discuss about the tree installation along the corridor.	CM Team/Kendry Contreras	February 4, 2020	February 18, 2020	New

#### 4. MEETINGS/ PROJECT COORDINATION

- New Progress Meeting are schedule at the Field Office every other Tuesday at 10:30am. Progress meeting this week was postponed due to the Holidays.
- Meeting with Ellisdale On 02/13/2020. Main points discussed:
  - FMCC PEPCO crew will finish their work prior of Ellisdale mobilizing on Tuesday
  - Ellisdale will restored the damage PCC base done by their wet utility crew during this time period.
  - The permit will expire on 04/01.
  - Ellisdale estimated 4 weeks to complete their work however, DDOT is allowing them two additional weeks for weather/ unforeseen events so no more concessions.
  - Care of the island / curb is responsibility of the contractor working on it.
  - DDOT will reinstate both our excavation and public space occupancy permits effective Tuesday, February 18, 2020.
  - Both permits are currently revoked and lapsed, Mr. Proctor will reactivate permits to allow renewal within the TOPPs system.
  - Ellisdale is allowed to begin remobilizing and occupying public space on Tuesday, February 18th, in accordance with currently revoked public space permits and approved TCP.
  - Agreement that all of Ellisdale work within public space to be completed no later than April 1, 2020
  - DDOT and FMCC to complete all work on the bus island beginning April 2, 2020.
  - All agreed to monitor work closely and if possible to allow FMCC to complete work on bus island prior to April 1st.

#### 5. DAILY WORK PERFORMED

##### Monday 02/10/2020

**FMCC** was onsite providing MOT devices for prior to cancellation of work for the day

**FMCC Electrical** crew was onsite but due to rainy weather cancelled all work for the day.

**FMCC** civil crew was onsite but due to rainy weather cancelled all work for the day.

**Omni Excavators** was onsite but due to rainy weather cancelled all work for the day.

## Tuesday 02/11/2020

**FMCC** was onsite providing MOT devices for prior to cancellation of work for the day

**FMCC** civil crew was onsite but due to rainy weather cancelled all work for the day.

**Omni Excavators** was onsite but due to rainy weather cancelled all work for the day.

## Wednesday 02/12/2020

**FMCC** was onsite providing MOT devices for **Omni Excavators** at NWC of 14<sup>th</sup> & R St`.

**Omni Excavators Night Work:** was onsite at NWC of 14<sup>th</sup> & R St working on tie-in of existing 12" water main to newly installed ductile iron pipe. Connection was also made to existing air outlet using (1) 6" butterfly gate valve. Measurements were as follows. Recycle material (CR6) was used to backfill trench including valve casing.

**FMCC:** Excavated 1.0' in planting areas on NB & SB 14<sup>th</sup> Street NW between P Street & T Street

**DCI:** Installed parking meters on NB & SB 14<sup>th</sup> Street NW between P street & W Street

**OMNI:** Backfilled the water main on SB 14<sup>th</sup> Street NW at R Street

## Thursday, 02/13/2020

**FMCC** was onsite providing MOT devices for prior to cancellation of work for the day

**FMCC Electrical** crew was onsite but due to rainy weather cancelled all work for the day.

**FMCC** civil crew was onsite but due to rainy weather cancelled all work for the day.

**Omni Excavators** was onsite but due to rainy weather cancelled all work for the day.

## Friday, 02/14/2020

**FMCC** was onsite providing MOT devices for **Omni Excavators** at NWC of 14<sup>th</sup> & R St`.

**Omni Excavators** was onsite at NWC of 14<sup>th</sup> & R St working on installation of traffic signal foundation TS-27 including PVC conduit stubbed at granite curb for foundation and hand box (HB-09). Hand digging of L82/PP was began but not completed. Measurements were as follows. Recycle material (CR6) was used to backfill trench including valve casing.

**FMCC** Electrical crew worked at 14<sup>th</sup> & Wallach St installing (6) hawk signal modules (Yellow & Red) at TS-58, TS-59, L-91, & L92  
PVC conduit was encased with Class B concrete at NWC of 14<sup>th</sup> & R St at 2/17/20.

## Saturday, 02/15/2020

**FMCC** was onsite providing MOT devices for **FMCC Electrical Crew** at 14<sup>th</sup> & R St intersection and 14<sup>th</sup> & T St.

**FMCC Electrical** was onsite at 14<sup>th</sup> & T St as well as 14<sup>th</sup> & R St removing temporary traffic poles, transformer bases and concrete bases. Roadway was closed temporarily at T St during loading of poles and electrical traffic items.

### 7. RFI's/SUBMITTALS

#### 1. Requests for Information:

- To date, we have received **47** RFIs; **45** RFIs have been answered.
- Glare shield RFI submitted to streetlight division.
- Pending response about Hwak Signal material cost adjustment

#### 2. Submittals:

- We have received **87** Submittals; **87** Submittals have been Approved.

### 8. CHANGE ORDERS/TASK ORDERS

- Price breakdown for add water work received from FMCC. Tie-in were priced separately. Pepco sent letter on 12/14 accepting and taking responsibility of the CO. Sent Article 3 letter to FMCC on 12.20. Received commitment from DCwater to write Change order, in progress.
- DDOT forwarded executed Change order # 5( extended Overhead) to FMCC on 02/12/20120
- ATCS MOD 4 rev1 additional funding submitted for review. Negotiations finalized. Package was submitted
- FMCC submitted proposal for additional material price adjustment of Hawk signals

### 9. DBE or CBE PARTICIPATION SUMMARIES

#### 3. ATCS CBE / DBE Activity:

- Hayat Brown LLC.: Provided Office Engineering and Inspection support for this project.
- Cube root: Provided Inspection support
- Tina Boyd- PR and Outreach support, webpage management

#### 4. Fort Myer Construction Corp. DBE Activity:

- Omni Excavators Inc.
- Den United LLC.
- DC Line
- Cooper landscaping
- Long Fence
- Capital Flexible pavement

## 10. ACCIDENTS/INCIDENT

No accidents or incidents to report

## 11. PHOTOS OF WORK PERFORMED THIS PERIOD



Temporary asphalt placed (7 x 14 x 0.5) at Ellisdale pothole



Mini excavator used to remove existing water main



Pipe hardware installed and torque wrenches used to secure connections.

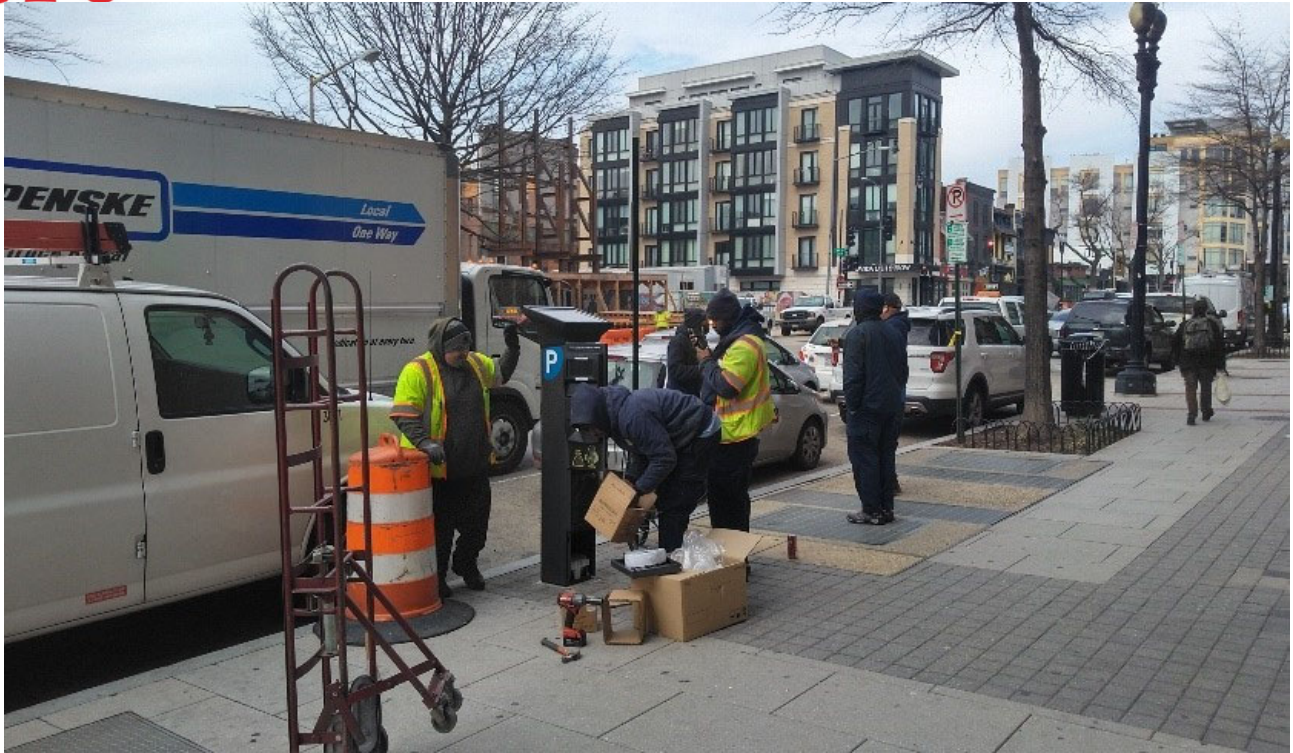




Connections shown at 12" main, gate valve to existing air outlet



12" water main connections shown at southbound 14<sup>th</sup> St



DCI installing a parking meter at 2125 14th Street NW



TS-27 foundation hand dug by Omni Excavators



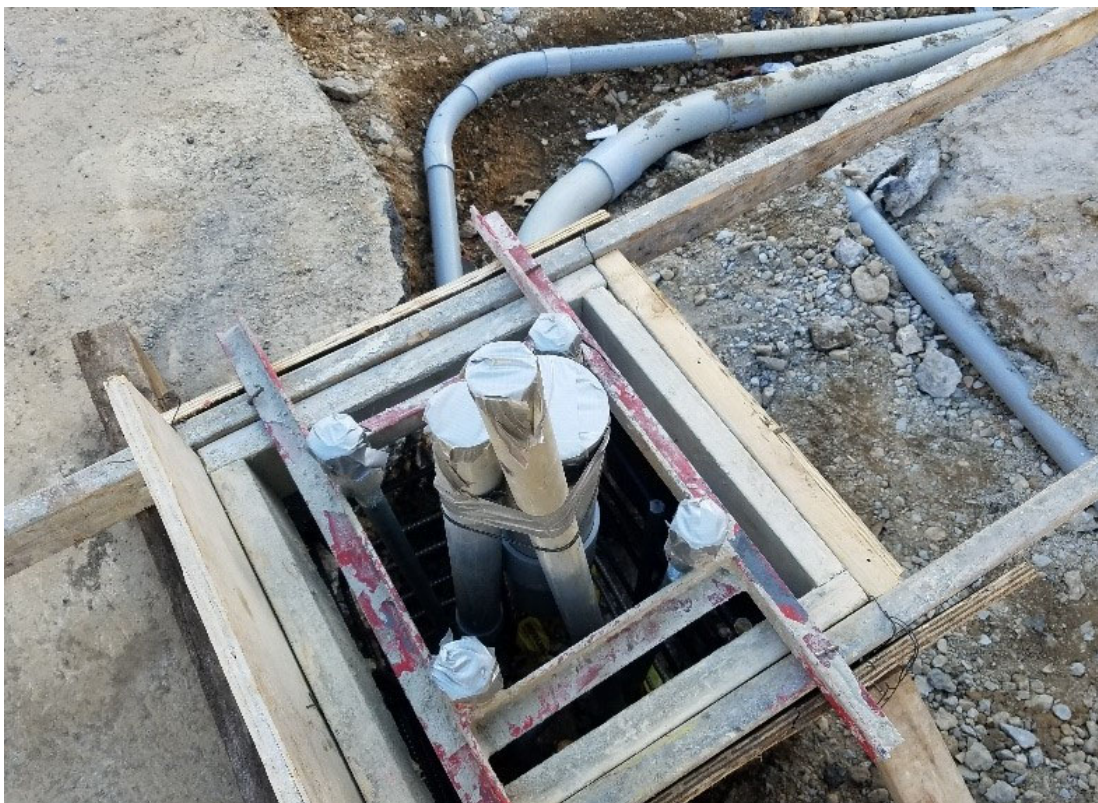
Pepco vault at 2200 block of 14<sup>th</sup> St near Ellisdale project framed and concrete placed



Reinforcement for TS-27 foundation



2" & 4" PVC conduit shown at NWC of 14<sup>th</sup> St at TS-27 & Hand box HB-09



TS-27 ready for PCC concrete placement.



Temporary base prepared for loading



Nylon straps used to remove temporary base from corner



Loading of temporary bases by FMCC at NEC of 14<sup>th</sup> & T St.



Loading of temporary bases at 14<sup>th</sup> & R St intersection



Boom truck used at SEC of 14<sup>th</sup> & T St