

14th Street Streetscape Project N.W.
From Thomas Circle to Florida Ave
DC Contract No.: DCKA-2016-C-0043

FAP No.: STP-2016 (054)

CONSTRUCTION MANAGER'S
WEEKLY PROGRESS REPORT
10/01/2018 – 10/05/2018

Project Website: www.14thstreetproject.com



Excel trimming the tree on the Eastside between Thomas Circle and N Street

1. EXECUTIVE SUMMARY

Project Description:

The scope of the construction work includes the followings:

- The removal and disposal of existing roadway pavement, curb and gutter and sidewalks, milling of existing asphalt pavement to the extents shown on plans.
- The resurfacing of existing asphalt pavement using 2" Superpave AC surface on 14th Street between Thomas Circle and Florida Ave as shown in the plans.
- The replacement of all curbs and gutters with Granite Curbs, 12" Brick Gutter, Concrete Sidewalk, Wheelchair/Bicycle Ramps, and Cobble Stone LID Paver, Bioretention Planters as shown on the plans or as directed.
- The removal and transportation to storage yard of Existing Traffic Signals and Light Poles as shown on plans. Traffic signal relocation and equipment upgrading of Traffic Signals at all intersections of 14th Street within the project limit as shown on plans.
- Streetscaping throughout the 14th Street corridor as shown in the plans.
- The installation of traffic signing and permanent pavement markings.
- Upgrading of street lighting throughout the 14th Street corridor as shown in the plans.
- Construction and upgrading of single catch basin, double catch basin, and triple catch basin.
- Construction / Upgrading of new Watermains, Fire Hydrants
- Full Reconstruction of R Street.
- Installation of new Bus Islands and bus pads as shown on the plans and as directed.
- The installation and use of erosion and sediment control measures as required.
- Mobilization and demobilization, performance of field layout, provision and maintenance of engineer's field facilities, progress photographs, and the proper maintenance of vehicular and pedestrian traffic during construction, including provision of all required construction warning and detour signs and traffic control devices.

Work by Others

The PEPCO manhole replacement or vault adjustments activities will be done by others approved by PEPCO. The ATCS CM team will coordinate all these activities with the Contractor and PEPCO.

2. STATUS OF CONSTRUCTION / PROGRESS SUMMARY

Progress Summary:

1. Omni onsite excavating and installing electrical conduits
2. Omni adjusting and installing Catch Basins and 15" PCC Connection Pipes
3. Omni excavating and installing Street Light and Traffic Signal Foundations
4. FMCC Electrical Installing Street Light Poles. LED/Globes and pulling cable for Street Lights
5. FMCC onsite providing MOT for Omni and FMCC Electrical

CM Community Outreach Activities

1. Connected with retailers and property owners in project corridor to provide updates and address any questions or concerns.
2. Project Website is up and running. Responded to email questions that came through Project Website.

3. ISSUES / ACTION ITEMS

- Ongoing Issues / Items: Bus Shelter Removal / Installation, PEPCO Manhole conflicts

- New Issues / Items:
- Action Items: Pepco working on conflicts (approx. 25) and give CM a report on time frame for design and corrections.
- Spoke with Carla Longshore from DDOT TDD. Need to reach back out to get assistance with Clear Channel and getting the Street Car Shelters

4. MEETINGS / PROJECT COORDINATION

Progress Meeting are schedule at the Field Office every Tuesday at 10:30am

5. DAILY WORK PERFORMED

Monday 10/01/2018

1. Omni began excavation of the trench for the 15" PCC connection pipe for CB-13 located on the southside of Corcoran Street on the west of 14th Street.
2. Omni removed the existing Traffic Signal Foundation TS10 at the NW corner of Rhode Island Ave
3. FMCC was onsite providing MOT for these operations

Tuesday 10/02/2018

1. Omni continued to excavate and install the 15" PCC connection pipe for CB-13
2. FMCC electrical installed two (2) Twin 20 Street Light Poles between Q and Corcoran Street.
3. FMCC electrical installed four (4) 100-watt LED and Globes on previously installed Street Light Poles
4. Excel Tree Service was on site to trim two (2) Tree between Thomas Circle and N Street that were near the newly installed Twin 20 Street Lights.
5. FMCC was onsite providing MOT for these operations

Wednesday 10/03/2018

1. Omni removed the traffic signal Foundation TS07 that was installed at the wrong location.
2. Omni excavated and formed for the new TS07 foundation at the SE corner of Rhode Island Ave
3. FMCC was onsite providing MOT for these operations

Thursday 10/04/2018

1. Omni continue to work on the TS07 Foundation at the SE corner of Rhode Island Ave
2. Omni poured the cradle for both CB-13 and CB-08 15" PCC connection pipes using DC Wasa mix.
3. Omni abandoned the catch basin and connection pipe at the NW corner of 14th and P Street.
4. FMCC Electrical installed the ground rod in the Traffic Control Foundation for TC2.
5. FMCC was onsite providing MOT for these operations

Friday 10/05/2018

1. Omni backfilled the previously poured 15" PCC connection pipes for CB-13 and CB-08.
2. FMCC clean up the site for the holiday weekend.
3. FMCC was onsite providing MOT for these operations.

Saturday 10/06/2018

1. Contractor did not request to work on this day due to the Columbus Holiday

6. INSPECTION & MATERIAL TESTS PERFORMED

- 10/04/18 7.0 CY of DC Wasa Mix Air 5.0%, Slump 4.0", a set of cylinders were made

7. RFI's / SUBMITTALS

- Requests For Information:
 - o We have received 12 RFIs; 11 RFIs have been answered.
- Submittals:
 - o We have received 64 Submittals; 63 Submittals have been Approved

8. CHANGE ORDERS/TASK ORDERS

- o None

9. DBE or CBE PARTICIPATION SUMMARIES

- ATCS CBE / DBE Activity:
 - o Hayat Brown LLC.: Provided Office Engineering support for this project.
- ATCS CBE / DBE Activity
 - o Cube Root, Corp.: Providing an Electrical Inspector to support the project.
- Fort Myer Construction Corp. DBE Activity:
 - o Omni Excavators Inc.

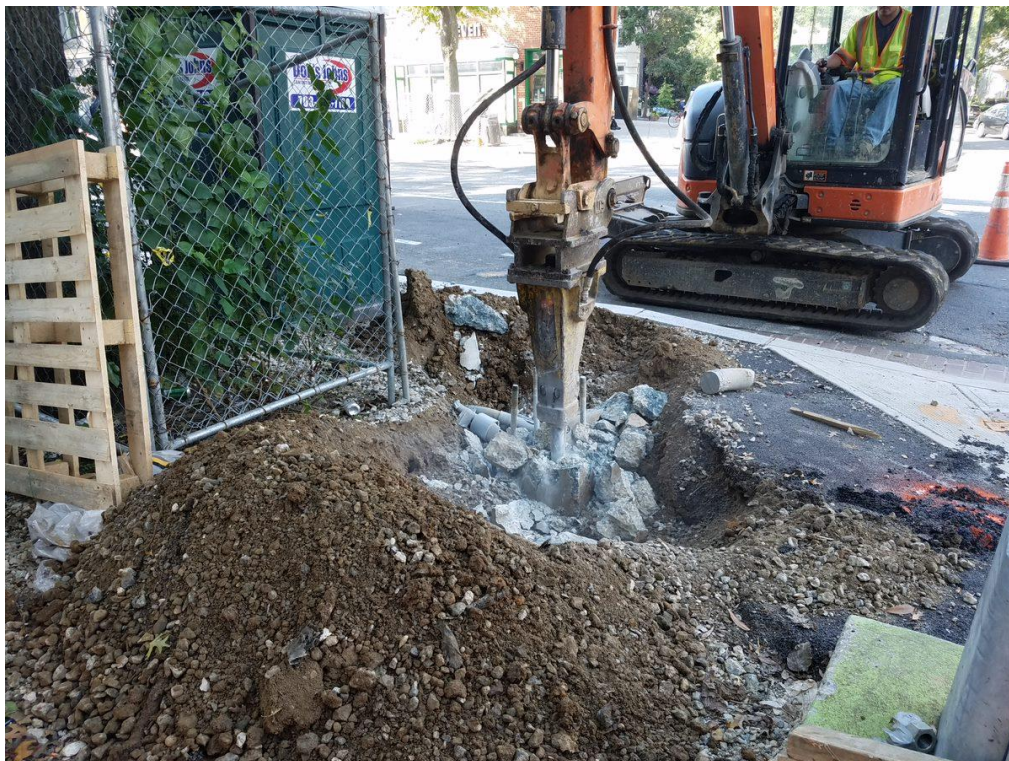
10. ACCIDENTS / INCIDENTS

- None

11. PHOTOS OF WORK PERFORMED THIS PERIOD



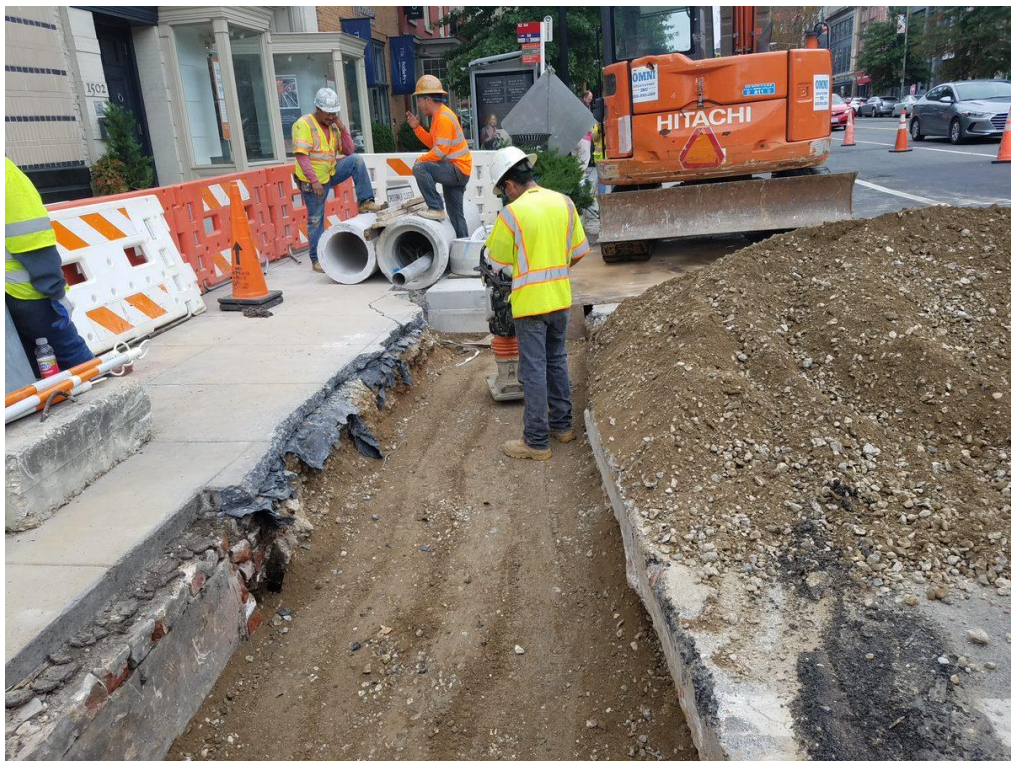
Installation of Water Seal into the Catch Basin before 15" PCC Connection pipe is installed



Demolition of the Traffic Signal Foundation that was placed in the incorrect location at Rhode Island



Pouring DC Wasa Mix for the Cradle for the 15" PCC Connection Pipe



Backfilling over the 15" PCC connection pipe



Placing 100-watt LED and Plastic Globe on Twin 20 Street Light Pole



Installing Ground Rod into Traffic Signal Foundation