

14th Street Streetscape Project N.W. From
Thomas Circle to Florida Ave
DC Contract No.: DCKA-2016-C-0043

FAP No.: STP-2016 (054)

**CONSTRUCTION MANAGER'S
WEEKLY PROGRESS REPORT
9/15/2019 - 9/21/2019**

Project Website: www.14thstreetproject.com



Pressure testing continued at 14th & R St by Omni.

PREPARED BY Kendry A. Contreras

1. EXECUTIVE SUMMARY

Project Description:

The scope of the construction work includes the followings:

- The removal and disposal of existing roadway pavement, curb and gutter and sidewalks, milling of existing asphalt pavement to the extents shown on plans.
- The resurfacing of existing asphalt pavement using 2" Superpave AC surface on 14th Street between Thomas Circle and Florida Ave as shown in the plans.
- The replacement of all curbs and gutters with Granite Curbs, 12" Brick Gutter, Concrete Sidewalk, Wheelchair/Bicycle Ramps, and Cobble Stone LID Paver, Bioretention Planters as shown on the plans or as directed.
- The removal and transportation to storage yard of Existing Traffic Signals and Light Poles as shown on plans. Traffic signal relocation and equipment upgrading of Traffic Signals at all intersections of 14th Street within the project limit as shown on plans.
- Streetscaping throughout the 14th Street corridor as shown in the plans.
- The installation of traffic signing and permanent pavement markings.
- Upgrading of street lighting throughout the 14th Street corridor as shown in the plans.
- Construction and upgrading of single catch basin, double catch basin, and triple catch basin.
- Construction / Upgrading of new Watermains, Fire Hydrants
- Full Reconstruction of R Street.
- Installation of new Bus Islands and bus pads as shown on the plans and as directed.
- The installation and use of erosion and sediment control measures as required.
- Mobilization and demobilization, performance of field layout, provision and maintenance of engineer's field facilities, progress photographs, and the proper maintenance of vehicular and pedestrian traffic during construction, including provision of all required construction warning and detour signs and traffic control devices.

2. STATUS OF CONSTRUCTION / PROGRESS SUMMARY

Progress Summary:

1. FMCC demobilize its subcontractors (Omni, Den) for couple days
2. FMCC sign crews on site installing small signs
3. DEN Finish with Sidewalk work at Florida Ave. Mobilize to W street and did Concrete pavement
4. Omni continues water main installation work at 14th St. NW & R St. Omni has made no significant progress on getting the leaks resolve, looking for a different Gage
5. PEPCO contractors continue work at Riggs, continue work at Florida Street.

CM Community Outreach Activities:

1. Meeting with Monica Busolitti regarding damaged wood columns
2. Posted on website incident with gas Leak casue by PEPCO contractor
3. TBA personnel continues to respond to questions that come through project portal.
4. Continue working with Businesses along Florida St. block.

3. QC/ ISSUES / ACTION ITEMS

- PEPCO utility conflicts identified at ~ approximately 7 locations:
 - 14th & Riggs – has already started since ~ 08/05/2019. Project duration is ~1month. Schedule completion 10/15
 - 14th & U – There are three (3) manholes that need vertical adjustment vs. one (1) previously identified. Received pricing to begin negotiations
 - FMCC is working to relocate an electric man-hole vault at 1720-1722 14th St. as a PEPCO subcontractor. Ongoing
- Developer Ellisdale at Florida and 14th Street must vacate the staging area and sidewalk to complete that section. Meeting was held with the owner explaining the consequences of not meeting that deadline
- DC water/ Pepco Conflict still hindering progress at the block of T and U street.
- Contractor has significantly slowed down, pulled their subs to go to other projects
- Not finishing the R street Water work can significantly affect the completion of that intersection, Omni is not moving fast enough

ACTION ITEMS.-

Action	Description	Action By	Original Date	Expected Date	Status
001	Address the MOT, safety issues within the corridor.	FMCC/Kevin Felix	June 5, 2019	September 24, 2019	Ongoing
002	Submit bus shelters Clear Channel full acceptance documentation.	FMCC/John Constantino	June 14, 2019	September 24, 2019	Ongoing
003	Address the issues with cracked/missing sidewalk sections	FMCC	July 2, 2019	September 24, 2019	Ongoing
004	Address DC Water's issue that DEN is covering their curb stops, between R and T Streets.	FMCC/DEN	July 2, 2019	September 24, 2019	Ongoing
005	Insert the missing valve cover at 1724 14 th Street NW	FMCC	July 5, 2019	September 24, 2019	Ongoing
006	FMCC to provide some type of handle for the grate placed IFO Cleaners at 1329 14 th Street	FMCC/John Constantino	July 30, 2019	September 24, 2019	Ongoing
007	FMCC to resolve the cracked granite, contact insurance, and follow up with the businesses.	FMCC/Abdalla Elsheikh	July 30, 2019	September 24, 2019	Ongoing
008	Mr. Said Chestnut to contact Mr. Jermaine Quattlebaum and start punch list for DC Water work.	ATCS/Said Chestnut and DC Water/ Jermaine Quattlebaum	August 06, 2019	September 24, 2019	Ongoing
009	Address the comments regarding the pricing for the 4 extra poles	FMCC/Shaddy Abdelaal	August 13, 2019	September 24, 2019	Ongoing
010	RFI-16, CB-25 conflict on T Street. Provide a sketch with the proposed solution	FMCC/John Constantino	August 13, 2019	September 24, 2019	Ongoing

	RFI-16, CB-25 conflict on T Street. Provide a write-up on the proposed solution	DC Water/ Jermaine Quattlebaum	August 13, 2019	September 24, 2019	Ongoing
012	Provide PEPCO a price proposal for the vertical adjustments within the corridor.	FMCC/John Constantino	August 27, 2019	September 24, 2019	Ongoing
013	RFI for the fire hydrant conflict at the Zipcar parking sign at northeast side of Q Street	FMCC/Abdalla Elsheikh	August 27, 2019	September 24, 2019	Ongoing
014	FMCC to sign CO#2 and CO#3 for DDOT approval.	FMCC/Cesar Casanova	August 27, 2019	September 24, 2019	Ongoing
015	Site visit with Mr. Cesar Barreto, ADA Specialist for the vault slope	CM/Kendry Contreras	August 27, 2019	September 24, 2019	Ongoing
016	Schedule a meeting with IPMD for the discussion about parking meter/Zip car signs	FMCC/John Constantino	September 10, 2019	September 11, 2019	New
017	Forward Omni's pressure test, bacterial sample and chlorination proposal to DC Water	FMCC/Abdalla Elsheikh	September 10, 2019	September 11, 2019	New
018	RFI-37, Bioretention 2. Test pit for utility conflict.	FMCC/John Constantino	September 10, 2019	September 11, 2019	New
019	Place the purchase order for the ITS components.	FMCC/Shaddy Abdelaal	September 10, 2019	September 10, 2019	New
020	Site meeting schedule with DC Water/CM Team for the work sequence at R Street intersection.	FMCC/Shaddy Abdelaal	September 10, 2019	September 13, 2019	New
021	Schedule with CM Team to meet with FMCC scheduler in person	FMCC/Cesar Casanova	September 10, 2019	September 13, 2019	New

4. MEETINGS/ PROJECTCOORDINATION

- New Progress Meeting are schedule at the Field Office every other Tuesday at 10:30am.
- Meeting with FMCC Scheduler, DDOT and ATCS . Some of the highlights:
 - CM Team agreed with FMCC scheduler that there have been some misunderstandings in PEPCO spreadsheet. Item No. was changing and FMCC scheduler decided to sort PEPCO work by using PEPCO facility No. SWC of U Street work will be pending on Article 3 for PEPCO vertical adjustment approval. The other corners were completed.
 - CM Team, FMCC and DDOT reviewed the status and updated the completed (or to-be-completed) dates for PEPCO work.
 - CM mentioned that the distributed schedule update is for July 2019. CM did not receive the August 2019 update.
 - CM requested to change the watermain work at R Street intersection (RRI-W120) from 100% to only 90%, which is pending on the pressure test and chlorination test. The tie-in will probably take 1 week.
 - CM requested the watermain work at R Street to be tied to the electrical work, the bus island work and the full depth pavement reconstruction.
 - FMCC scheduler to discuss internally with FMCC personnel to update the dates and the sequences of work at R Street intersection.
 - CM Team mentioned the relocation of the watermain at T Street which can cause significant

schedule delays. FMCC scheduler was not aware of the work at T Street. The July 2019 update did not include this week since the work was just discovered and discussed in August 2019. CM personnel gave FMCC scheduler some milestones for the work at T Street.

- The hardscape work from R Street to S Street was discussed. The east side of this section was completed.
- FMCC recommended to divide the west side of R Street to S Street section (33% completed) to be divided to 3 subsections
- CM disagreed with FMCC on the criticality of July 2019 update. CM questioned why FMCC work onsite did not show the urgency – criticality that the schedule update was showing. FMCC did not start work immediately at the sections where PEPCO conflict (#23, for example) has been resolved. Mr. Elsheikh would need to revise the schedule criticality and provide a response on this matter.
- Mr. Elsheikh was not aware that only the bus islands at N Street were fully completed. For the other “forming” bus islands, FMCC just worked on the curb forming, the small island section but did not place concrete, nor form the wheelchair ramp or setup the handrails for the big section. FMCC persuaded CM to agreed that those bus islands were at 70% completion. Also, Mr. Elsheikh believed that some of the bus islands can be finished since they do not need the steel plates and will revise the project plan.
- CM scheduler disagreed with FMCC on leaving the criticality to the landscaping & planting activities (PCO-0010 & PCO-0020), these activities should not be in the “finish-to-start” relationship with the hardscape work, nor the lane stripping. CM Team also disagreed to FMCC explanation that the discrepancies will be just 10 days, CM added that these discrepancies keep adding and can push the project completion date far behind.
- FMCC scheduler agreed to correct the relationship to “finish-to-finish” with 2 slack days.
- The same applies to Punch List activity (PCO-0040) as it should not impact the criticality of the schedule.

5. DAILY WORK PERFORMED

Monday 9/16/2019

FMCC set up MOT at 14th & Thomas Cir, 14th & R St. and 14th & Wallach and 14th & U St. in NB and SB directions. FMCC crew also Set up MOT at 14th & W St. N.W. for FMCC Pepco Crew Work Zone; From Thomas Cir. Thru Florida Ave & 14th St. Intersection. The MOT Const. Work-zone area were: R St. NW & 14th St. (OMNI Inc.): at 1721 14th St. Near Intersection of Riggs St. and 14th St. NW (FMCC-PEPCO Work Crew); and at W St. and 14th St. as well as 14th St. NW and Florida Ave. for DEN construction activities between W St. and Florida Ave on 14th St. South-Bound.

D.E.N. Construction activities included: The placement of 16 Cubic Yards, Class E for PCC 10” & 12” near at W St. & 14th St. NW & plus 4.5 Cubic Yards Class E, for two (2) wheelchair Ramps at 1350 Florida Ave; 14th St. Crosswalk. DEN also placed 9 Cubic Yds of Class F for PCC Sidewalk.; The crew placed and Installed Brick Gutter as well as Curved-Radius and Straight Granite. The construction activities included placement of Gab, Borrow Embankment for Sidewalk PCC at 2301 Block 14th St. NW across from 7-Eleven Store; at SWC of 14th NW & Florida Ave. NW. DEN placed a total of 9 Cubic Yards, Class F (3500PSI) Monumental Concrete for Sidewalks on Top of Vapor Barrier and compacted 4” GAB (Aggregate Base). The crew placed #8 as well as Structural Sand 18” below the #8 Stone for Permeable Stone Ponds plus and Tree Boxes.

Omni Excavators was onsite to continue pressure test started yesterday but was not completed due to pressure valve losing 20 psi of pressure. Work is scheduled to continue on 9/17/19.

FMCC electrical crew removed (3) 28" streetlight poles (R93,R94 & R95) from 14th & Florida Avenue but did not remove transformer bases or foundations.

Tuesday 9/17/2019

FMCC Sign crew was onsite working from T to U St installing new traffic signs.

Omni Excavators was onsite to continue pressure test started yesterday but was not completed due to gas leak shutting down entire 1700 block of 14th St. Work is scheduled to continue 9/18/19.

D.E.N. United Light pole foundation R95PP/TS was removed by D.E.N. at NEC of 14th & Florida Avenue.

FMCC electrical crew removed (3) 28" streetlight poles (R93, R94 & R95) from 14th & Florida Avenue be recorded for payment today.

FMCC set up MOT at 14th & Thomas Cir, 14th & R St. and 14th & Wallach and 14th & U St. in NB and SB directions. FMCC crew also Set up MOT at 14th & W St. N.W. for FMCC Pepco Crew Work Zone; From Thomas Cir. Thru Florida Ave & 14th St. Intersection. The MOT Const. Work-zone area were: R St. NW & 14th St. (OMNI Inc.): at 1721 14th St. Near Intersection of Riggs St. and 14th St. NW (FMCC-PEPCO Work Crew); and at W St. and 14th St. as well as 14th St. NW and Florida Ave. for DEN construction activities between W St. and Florida Ave on 14th St. South-Bound.

D.E.N. Construction activities included: The placement of 16 Cubic Yards, Class E for PCC 10" near at W St. & 14th St. NW & plus 13 Cubic Yards Class E, for two wheel chair Ramps at 1350 Florida Ave; 14th St. Crosswalk. DEN also placed 9 Cubic Yds of Class F for PCC Sidewalk.; The crew placed and Installed Brick Gutter as well as Curved-Radius and Straight Granite. The construction activities included placement of Gab, Borrow Embankment for Sidewalk PCC at 2301 Block 14th St. NW across from 7-Eleven Store; at SWC of 14th NW & Florida Ave. NW. DEN placed a total of 9 Cubic Yards, Class F (3500PSI) Monumental Concrete for Sidewalks on Top of Vapor Barrier and compacted 4" GAB (Aggregate Base) at Entrance of 2301 Bldg. . The crew also removed the existing Brick Pavers at Entrance of 2301 to facilitate the 8% Max Incline for Wheel Chair Ramp since the original Brick Paver was too steep between 12 & 13% too steep for Wheel Chair to climb, must meet the Maximum 8% ADA specifications and codes for Wheel Chair Ramps.

Wednesday 9/18/2019

FMCC

Set up MOT at 14th & Thomas Cir, 14th & R St. and 14th & Wallach and 14th & U St. in NB and SB directions. FMCC crew also Set up MOT at 14th & W St. N.W. for FMCC Pepco Crew Work Zone; From Thomas Cir. Thru Florida Ave & 14th St. Intersection. The MOT Const. Work-zone area were: R St. NW & 14th St. (OMNI Inc.): at 1721 14th St. Near Intersection of Riggs St. and 14th St. NW (FMCC-PEPCO Work Crew); and at W St. and 14th St. as well as 14th St. NW and Florida Ave. for DEN construction activities between W St. and Florida Ave on 14th St. South-Bound

D.E.N. Construction activities included:

The placement of 16 Cubic Yards, Class E for PCC 10" near at V St. & 14th St. NW Intersection at SWC & plus 22 Cubic Yards Class E. DEN performed Common Excavation of PCC, Sidewalk Brick & Gutter near the Crosswalk. DEN also placed Borrow Embankment, Aggregate Base (GAB) all

compacted with Jumping Jack.; The construction activities included Common Excavation and hauling off the debris and placement of Borrow Embankment and GAB at North East of Reeves Municipal Bldg Centre at 14th & V St. Intersection. DEN initially Saw Cut all PCC 10" along the Control Joint Lines per DC-D. Code and Guidelines. They drilled and placed Roadway Dowels along with WWF (Wire Mesh 6X6) for reinforcing the PCC Base Class E, 3500PSI.

PEPCO: Capitol Paving Inc. Crew worked on PEPCO Manholes at several Locations along 14th St. Corridor from Thomas Cir. Thru Florida and 14th Intersection on both 8-17-19 Tuesday & on Wed. 9-18-2019 plus FMCC Pepco crew near Swann St. and R St. on 14th St. N.W.

Omni Excavators was not onsite.

Thursday, 9/19/2019

FMCC worked at SE corner of 14th & Q St repairing woodwork at entrance at Etto restaurant(1541 14th St NW). Molding was replaced, painted and caulked.

Omni Excavators was not onsite.

D.E.N. United was not onsite today.

Friday, 9/20/2019

FMCC worked throughout entire corridor cleaning up MOT devices and preparing for weekend pedestrian traffic. Saw-cut of directional bus island location at 1400 block of 14th St between Rhode Island Avenue and P St northbound took place today as well. Bus Island crew is scheduled to continue 9/23/19.

Omni Excavators was not onsite

D.E.N. United was not onsite today.

Saturday, 9/21/2019

FMCC placed, water filled jersey barriers, traffic drums, cones and arrow board from 14th & Rhode Island Ave to 14th & P St for electrical cable installation work by FMCC Electrical Crew.

FMCC installed 7-conductor and 4-conductor cable at 14th & P St intersection starting from M26 and ending at M21 including traffic cabinet TC3, M20, M23, traffic signal pole TS16, TS15, TS14, light pole L31 and L32.

6. INSPECTION & MATERIAL TESTS PERFORMED

1. There were a discrepancy and minor non-compliance regarding not filling the Plastic Jersey walls at Intersection and Cross walks at 14th St. & Florida Ave.
2. The final PCC Sidewalks had a few joints that were finished properly per specification and they need to be fixed.
3. The PCC 10" Base at and near Wheel Chair Ramps was over cut by approximately 5" to 6" which left a Gap approximately 6" between finished Brick Gutter and Existing PCC 10" Base at the Crosswalk; however, apparently most of that 6" GAP saw cut areas falls within the Proposed Bus Island zone.
4. A few Utility Manhole covers within the PCC Sidewalk areas need to be cleaned off from Debris and concrete residue.

7. RFI's/SUBMITTALS

1. Requests for Information:

- To date, we have received **37** RFIs; **35** RFIs have been answered.

2. Submittals:

- We have received **83** Submittals; **82** Submittals have been Approved.

8. CHANGE ORDERS/TASK ORDERS

- Received signed CO submitted to FMCC for missing ITS fiber items.
- Received signed CO submitted to FMCC for extra fittings for water main work.
- FMCC to revise overhead cost (field office, MOT...) change order for 6month contract extension. Waiting for FMCC
- FMCC to revise their request for material adjustment 4 light poles. Agreed on price waiting for official confirmation
- Received FMCC proposal for PEPCO manhole vertical adjustments

9. DBE or CBE PARTICIPATION SUMMARIES

3. ATCS CBE / DBE Activity:
 - Hayat Brown LLC.: Provided Office Engineering and Inspection support for this project.
 - Cube root: Provided Inspection support
4. Fort Myer Construction Corp. DBE Activity:
 - Omni Excavators Inc.
 - Den United LLC.

ACCIDENTS/INCIDENT

Gas- Utility strike:

The work was done by FMCC but working as a contractor to PEPCO and not to the project (different crew)

Around 11:00 They struck a high pressure gas line right in front of 1712 14th Street NW between R and Street (in front of Riggs ave.)

Firetrucks and police was dispatched, the block was evacuated, there was no injuries.

The project contract assisted by closing the block at S and R and detouring pedestrian around until police showed up and close it.

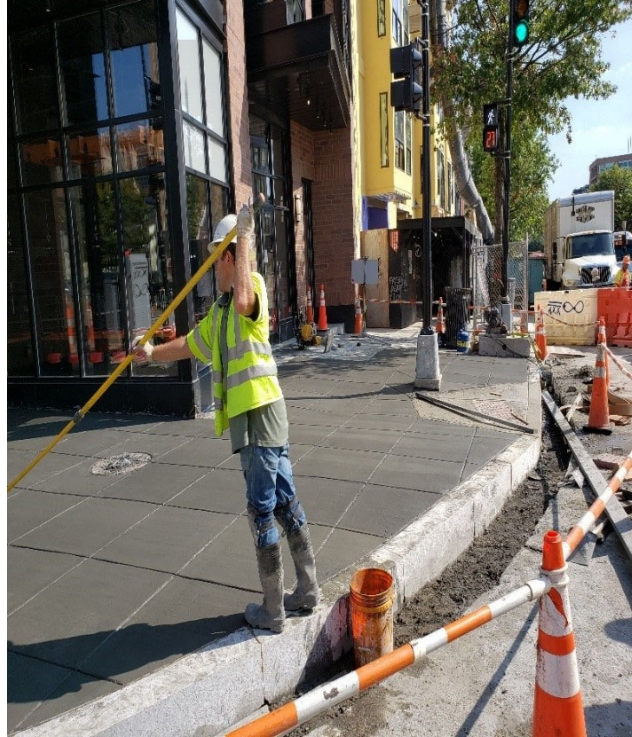
Washington Gas showed up around 11:30 ish and proceed with the repairs .

Around 1:00 pm work was completed and the road was reopened

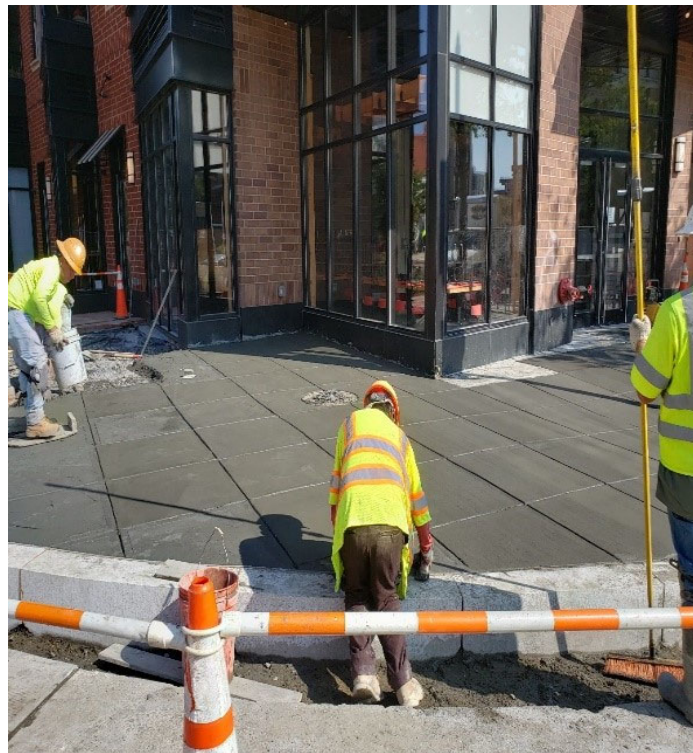
11. PHOTOS OF WORK PERFORMED THIS PERIOD



DEN did common excavation & placed Dry Mix for Straight and Radial (Curved) Granite and Brick Gutter at the Crosswalk & Intersection of Florida & 14th St. NW.



DEN replaced the existing (old) sidewalk with new PCC Sidewalk, DEN also adjusted 3 Utility Manholes.



DEN Crew poured PCC Sidewalk at 1350 Florida at NEC of Florida Ave .& 14th St. NW



Pressure test gauge losing pressure at NEC of 14th & R St down 20 psi.



FMCC sign crew installing new signs at 14th & Wallach St



Light pole foundation L95PP/TS to be removed by D.E.N.



DEN placed Brick Gutter and Granite at 1350 Florida Ave. at Crosswalk at 14th St. NW Intersection. But, DEN Saw Cut PCC base by 6" beyond the 12" Brick Gutter & It will be fixed later & it falls within Bus Island Zone.



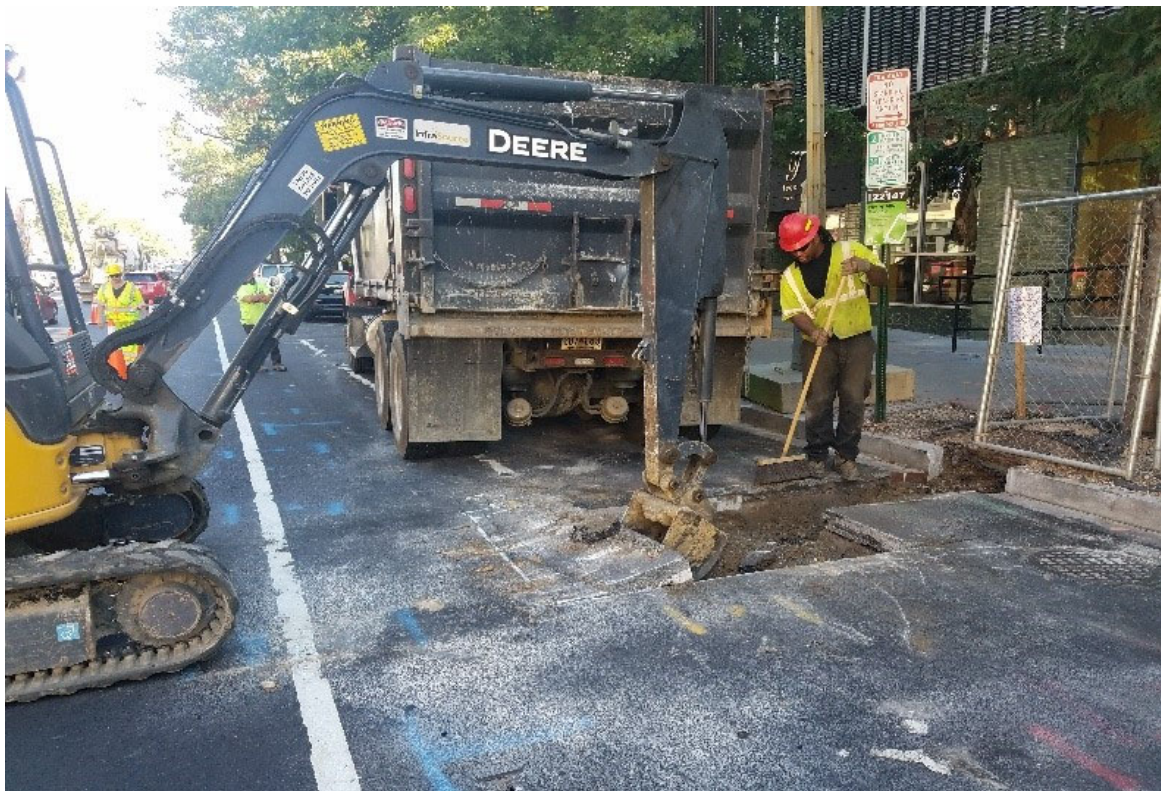
D.E.N crew poured PCC 10" Class E with Roadway Dowels drilled into PCC Base & Wire Mesh at W St. NW & 14th St. Intersection.



DEN excavated Existing PCC 10" Concrete & placed Aggregate Base (GAB) compacted, then placed PCC Base at SWC of 14th & V St. NW.



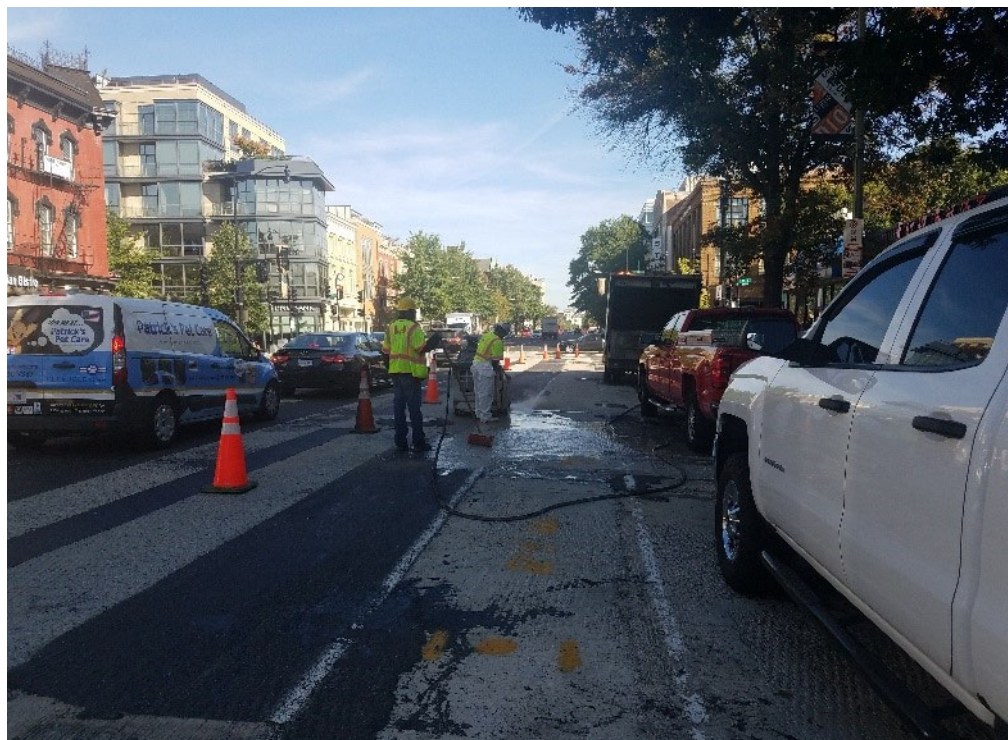
D.E.N crew poured PCC 10" Class E with Roadway Dowels drilled into PCC Base & Wire Mesh at V St. NW & 14th St. Intersection.



Washington Gas subcontractor excavating new work at NB 1300 block of 14th St



Wood molding sealed by FMCC



Saw-cut of roadway underway by FMCC



FMCC electrical crew at manhole M26 at SEC of 14th & P St pulling cable



FMCC electrical crew at manhole M26 at SEC of 14th & P St completing M26 to TC3 installation