

14<sup>th</sup> Street Streetscape Project N.W. From  
Thomas Circle to Florida Ave  
DC Contract No.: DCKA-2016-C-0043

FAP No.: STP-2016 (054)

---

**CONSTRUCTION MANAGER'S  
WEEKLY PROGRESS REPORT**  
01/05/2019 - 01/11/2020

---

**Project Website:** [www.14thstreetproject.com](http://www.14thstreetproject.com)



The porous flexible pavement placed at 1630 14<sup>th</sup> Street NW

**PREPARED BY Kendry A. Contreras**

## 1. EXECUTIVE SUMMARY

### Project Description:

The scope of the construction work includes the followings:

- The removal and disposal of existing roadway pavement, curb and gutter and sidewalks, milling of existing asphalt pavement to the extents shown on plans.
- The resurfacing of existing asphalt pavement using 2" Superpave AC surface on 14<sup>th</sup> Street between Thomas Circle and Florida Ave as shown in the plans.
- The replacement of all curbs and gutters with Granite Curbs, 12" Brick Gutter, Concrete Sidewalk, Wheelchair/Bicycle Ramps, and Cobble Stone LID Paver, Bioretention Planters as shown on the plans or as directed.
- The removal and transportation to storage yard of Existing Traffic Signals and Light Poles as shown on plans. Traffic signal relocation and equipment upgrading of Traffic Signals at all intersections of 14<sup>th</sup> Street within the project limit as shown on plans.
- Streetscaping throughout the 14<sup>th</sup> Street corridor as shown in the plans.
- The installation of traffic signing and permanent pavement markings.
- Upgrading of street lighting throughout the 14<sup>th</sup> Street corridor as shown in the plans.
- Construction and upgrading of single catch basin, double catch basin, and triple catch basin.
- Construction / Upgrading of new Watermains, Fire Hydrants
- Full Reconstruction of R Street.
- Installation of new Bus Islands and bus pads as shown on the plans and as directed.
- The installation and use of erosion and sediment control measures as required.
- Mobilization and demobilization, performance of field layout, provision and maintenance of engineer's field facilities, progress photographs, and the proper maintenance of vehicular and pedestrian traffic during construction, including provision of all required construction warning and detour signs and traffic control devices.

## 2. STATUS OF CONSTRUCTION / PROGRESS SUMMARY

### Progress Summary:

1. Good progress this week, with D.E.N. Omni and Capitol Flex paving mobilizing back
2. FMCC finished work at Bus Island at Florida ave. Clear Channel was notified so they can install their shelter
3. DEN was back doing small areas around the corridor, they began to restore the NW corner of 14<sup>th</sup> and T street
4. Electricians Continue with work on Light poles and pulling cable
5. P and V street signal were switched over
6. FMCC electrical continue pulling fiber optic comm cable and getting signal its components
7. Verizon completed all their worked they demobilize
8. Landscapers - Cooper continue demobilized
9. Omni began the Change order work at T-U block, work is progressing fast with several sticks of pipe installed
10. Night work 01/06 one tie-in completed on the South east side of R street and 14<sup>th</sup>
11. Flexible pavement installed @ various areas

**CM Community Outreach Activities:**

12. TBA personnel continues to respond to questions that come through project portal.
13. Continue working with Businesses along R St. block. Red light Bar, Sette Osteria
14. Good PR team effort to keep and report the affecting communities the water night work. Night work was successful with only minor call to complains

**3. QC/ ISSUES / ACTION ITEMS**

- Subcontractor is repairing the planters.
- Contractor used an unapproved concrete mix. Payment will be withheld for that item until the mix is submitted and approved. Mixes are currently with DDOT QC material for their review
- Bus Island at Florida completed. Clear channel to install their shelter
- Work by Omni is now part of the critical work, more resources are needed, storm drain going too slow
- DCwater still has two more tie-in to complete the intersection. One at night and one during daytime. They will not schedule anything until the shut-off valves are located and uncovered (paved over). This will cause a delay to the critical path that runs on R street intersection.
- Coordinating with Verizon for their manhole offset near R street ongoing.
- Multiple areas are unfinished that prevents the landscapers from completing their work (i.e. Cobble stone, PCC sidewalk, light pole and foundations).
- Omni working too slow is impacting other activities at R street
- PEPCO has all power feeds done. All traffic signal except for Florida done. FMCC missed a duct bank they need to install first. See bullet point below
- Comm conduit beyond Florida Ave. is full of sand. Harvey (DDOT signal) is aware of the issue.
- FMCC didn't installed duct bank at Florida Ave. They need to go back and install it
- FMCC has slowed down significantly now that they have the time extension sense of urgency seemed to have disappeared
- Water work tie-waiting to locate the switch off valves (they were paved over by FMCC)
- Omni forgot to install Pipe conduit and Handbox at the Island of P. Work has to be redone
- DEN install drainage out of the Bio retention # 3 planter too high, pipe had to be lowered

**ACTION ITEMS.-**

Action	Description	Action By	Original Date	Expected Date	Status
001	Address the MOT, safety issues within the corridor.	FMCC/Kevin Felix	June 5, 2019	January 21, 2020	Ongoing
002	Provide written document showing the potential danger with the installation of the handles for the grate placed IFO Cleaners at 1329 14 <sup>th</sup> Street	FMCC/Cesar Casanova	July 30, 2019	January 21, 2020	Ongoing
003	Schedule a meeting with the 1520 14 <sup>th</sup> Street owner for FMCC to present their options.	Jerrell Johnson	July 30, 2019	January 10, 2020	Ongoing

004	Mr. Said Chestnut to contact Mr. Jermaine Quattlebaum and start punch list for DC Water work.	ATCS/Said Chestnut and DC Water/ Jermaine Quattlebaum	August 06, 2019	January 10, 2020	Ongoing
005	Schedule a meeting with IPMD for the discussion about parking meter/Zip car signs	CM Team	September 10, 2019	January 21, 2020	Ongoing
006	Get DC Water commitment for FMCC to perform the watermain relocation work	DDOT/Olusegun Olaore	December 17, 2019	January 21, 2020	Ongoing
007	Submit the submittals for FY19 Aggregate Industries Concrete Mixes Design	FMCC/Abdalla Elsheikh	January 7, 2020	January 21, 2020	New
008	Submit the RFIs for the missing MPD camera at W Street and the HAWK signal installation specs.	FMCC/Ricardo Teixeira	January 7, 2020	January 21, 2020	New
009	Provide the ITS components signed delivery ticket from DDOT.	FMCC/Ricardo Teixeira	January 7, 2020	January 21, 2020	New

**4. MEETINGS/ PROJECT COORDINATION**

- New Progress Meeting are schedule at the Field Office every other Tuesday at 10:30am. Progress meeting this week was postponed due to the Holidays
- Winmar developer and Ellisdale developer has been coordinating with the project to provide access
- Correspondence with Mr Cooper, with Collection 14 developer to also address his scope. Agreed to perform everything except for the two lightpoles and Luminaires

**5. DAILY WORK PERFORMED**

**Monday 01/06/2019**

**Omni:** Removed 2 EA 3' X 3' sections of the bus stop PCC sidewalk to try and locate a 2" PVC conduit for a hand box at the NB bus stop at P Street. Omni forgot to install all of the 2" PVC conduit and hand box.

**Omni:** Prepped the water main at R Street NW west of 14<sup>th</sup> Street NW for tonight scheduled watermain tie in.

**Capital Flexi Pave:** Installed porous flexible pavement on NB 14<sup>th</sup> Street NW across from 1738 14<sup>th</sup> Street NW

**FMCC** was onsite providing MOT devices for FMCC Civil Crew at R St and Florida Avenue.

**FMCC Electrical** crew was onsite at 14<sup>th</sup> & Q St installing #6 and #8 & #10 cable and wired up new traffic cabinet. #6

New transformer bases at T St and Florida Ave were done and (2) & 20' tall steel traffic poles TS-37 & TS53 installed.

**FMCC** civil crew was onsite to continue work near SEC of 14<sup>th</sup> & Florida Ave completing directional bus island granite curb and repair area with 12" PCC Base. (1) Sewer manhole was adjusted at SEC of Florida Avenue as well.

### **Tuesday 01/07/2019**

**Omni:** Removed a third 3' X 3' sections of the bus stop PCC sidewalk to try and locate a 2" PVC conduit for a hand box at the NB bus stop at P Street. Omni forgot to install all of the 2" PVC conduit and hand box.

**Omni:** Placed cold patch asphalt in the two section of sidewalk they removed at the bus stop at NB 14<sup>th</sup> Street and P Street

**Omni:** Saw-cut the existing roadway at 1910 & 1926 14<sup>th</sup> Street NW for potholing

**Omni:** Excavated two test pits at 1910 & 1926 14<sup>th</sup> Street NW for the proposed watermain. Omni found no underground utilities in these areas. These areas will be part of the water main trench.

**Omni:** Backfilled the water main on SB 14<sup>th</sup> Street and R Street with CR-6 & GAB and covered with metal plates

**Omni:** Saw-cut and removed a third 3' X 3' section of sidewalk and excavated trying to find the 2" PVC conduit for the Hand Box at the NB bus stop at P Street & 14<sup>th</sup> Street NW

**Capital Flexi Pave:** Installed porous flexible pavement at 1630 & 1622 14<sup>th</sup> Street NW

**FMCC** was onsite providing MOT devices for FMCC Civil Crew at Florida Avenue.

**FMCC Electrical** crew was onsite at 14<sup>th</sup> & Wallach St installing 3 section at L92/TS/PP including teardrop fixture.

**FMCC** civil crew was onsite to continue work near SEC of 14<sup>th</sup> & Florida Ave placing **222 SF** of brick gutter:

**Omni Excavators** was onsite working on hand box (HB-06) conduit at SEC of 14<sup>th</sup> & P St. Work was not completed.

### **Wednesday 01/08/2020**

**FMCC:** Placed grout between the bricks in the brick gutter at the proposed bus stop at NB 14<sup>th</sup> Street NW and Florida Ave.

**FMCC:** Formed and poured the pedestrian crossing and ramps for the bus stop at NB 14<sup>th</sup> Street & Florida Ave.

**FMCC:** installed granite curb in the bull-nose of the bus stop at Florida Ave and NB 14<sup>th</sup> Street NW

**FMCC:** Saw-cut the existing PCC base at the proposed bus stop at NB 14<sup>th</sup> Street NW and Florida Ave

**FMCC:** Energized the traffic signals and deenergized the temporary traffic signals at P Street and 14<sup>th</sup> Street NW

**Omni:** Excavated a test pit in front of 1914 & 1910 14<sup>th</sup> Street NW in the inside southbound lane of 14<sup>th</sup> Street to see if they are clear of underground utilities for the proposed watermain. The test pit was clear of underground utilities and will be paid for in the water main installation.

**Omni:** Excavated and poured **1 EA** PCC In-Line Thrust Block with 2.0 CY of DCW 4000 PSI concrete for the water main tie in at the NW side of R Street & 14<sup>th</sup> Street NW

**Omni:** Removed the existing storm drain structure and brick and abandoned the connecting storm sewer pipe at the SW corner of T Street & 14<sup>th</sup> Street NW

**Capital Flexi Pave:**

Placed porous flexible pavement at 1301 14<sup>th</sup> Street NW

Placed porous flexible pavement at the SE corner of Corcoran Street NW and 14<sup>th</sup> Street NW

**Thursday, 01/09/2020**

**FMCC:** Saw-cut the existing pavement for the proposed brick gutter at **the** NW corner of T Street & 14<sup>th</sup> Street NW

**Omni:** Backfilled the water main trench with CR-6 Stone and GAB at R Street & SB 14<sup>th</sup> Street NW

**DEN:** Poured **(2) EA** handicap ramps with 3.0 CY of DDOT Class E concrete at the NW corner of T Street & 14<sup>th</sup> Street NW

**DEN:** Adjusted **(2) EA** manholes at the NW corner of T Street & 14<sup>th</sup> Street NW

**DEN:** Installed **13.67 LF** of straight Granite Curb at the NW corner of T Street & 14<sup>th</sup> Street NW

**DEN:** Installed **13.0 LF** of radial granite curb at the NW corner of T Street & 14<sup>th</sup> Street NW

**DEN:** Performed common excavation and removed 26.67 LF of existing granite curb at the NW corner of T Street & 14<sup>th</sup> Street NW

**DEN:** Removed the existing PCC Sidewalk at the NW corner of T Street & 14<sup>th</sup> Street NW

**DEN:** Poured **73.63 SY** of PCC sidewalk with 9.0 CY of DDOT Class F concrete at the NW corner of T Street & 14<sup>th</sup> Street NW

**FMCC** was onsite providing MOT devices for FMCC Civil Crew at Florida Avenue and **Omni Excavators** from Wallach St to T St.

**FMCC Electrical** crew was onsite at 14<sup>th</sup> & P St installing a 3-sectional traffic signal (L-34) at SEC of 14<sup>th</sup> & P St with backplate and removed transformer bases from temporary concrete bases at P St and switched intersection to permanent signals.

**FMCC** civil crew was onsite to continue work near SEC of 14<sup>th</sup> & Florida Ave, with 10" PCC Base at SEC of 14<sup>th</sup> & Fla. Ave bus island nose including new wheelchair ramp at bus island. (1) Sewer manhole was adjusted at SEC of Fla. Ave as well.

**Omni Excavators** was onsite excavating and installing **51 LF** of 12" ductile iron pipe water main to offset existing main beneath Pepco duct bank.

### **Friday, 01/10/2020**

**FMCC** was onsite providing MOT devices for FMCC Civil Crew at Florida Avenue and **Omni Excavators** from Wallach St to T St.

**FMCC Electrical** crew was onsite at 14<sup>th</sup> & V St installing a 3-sectional traffic signal (L-107) at NEC of 14<sup>th</sup> & V St with backplate and removed transformer bases from temporary concrete bases at V St and switched intersection to permanent signals.

**FMCC** civil crew was onsite to begin full depth roadway work near SWC of 14<sup>th</sup> & R St, with 10" PCC Base. (3) Sewer and (1) Gas utility manholes were adjusted at graded location.

**Omni Excavators** was onsite excavating and installing (**54.5 LF**) of 12" D.I.P water main to offset existing main beneath Pepco duct bank.

**DEN:** Installed **67.67 LF** of Brick gutter at the NW corner of T Street and 14<sup>th</sup> Street NW.

**DEN:** Finished excavating the Bio-Planter No.3 at 1626 14<sup>th</sup> Street NW.

**DEN:** Installed the perforated 6" PVC pipe, No.57 Stone, and Structural soil in Bio-Planter No.3

**DEN:** Installed **6.33 LF** of 6" PVC pipe between Bio-Planter No.3 and the manhole at 1626 14<sup>th</sup> Street NW

### **Saturday, 01/11/2020**

**FMCC:** An electrical crew was splicing wires for the street light in a manhole on the SE corner of N Street and 14<sup>th</sup> Street NW

**FMCC:** A second Electrical crew was working on the pedestrian signal heads for the intersection of at T Street and 14<sup>th</sup> Street NW

**FMCC:** A third electrical crew removed the temporary signal bases for P & Q Street

**FMCC:** The third electrical crew installed the cross arms on the proposed street lights at 1809, 1832, & 1700 14<sup>th</sup> Street NW

**Omni:** Excavated a test pit in two locations which will be used as watermain trench at 1944 & 1938 14<sup>th</sup> Street NW. Omni covered the rest pits with metal plates with stacks and asphalt. Omni located the watermain they were looking for in a trench in front of 1944 14<sup>th</sup> Street NW

**Omni:** Excavated and removed 2 EA water valve manholes on NB 14<sup>th</sup> Street at R Street

## **7.RFI's/SUBMITTALS**

### **1. Requests for Information:**

- To date, we have received **43** RFIs; **40** RFIs have been answered.

**2. Submittals:**

- We have received **87** Submittals; **86** Submittals have been Approved.
- 2019 Concrete Mix designs for Agg industries, submitted for approval

## 8. CHANGE ORDERS/TASK ORDERS

- Price breakdown for add water work received from FMCC. Tie-in were priced separately. Pepco sent letter on 12/14 accepting and taking responsibility of the CO. Sent Article 3 letter To FMCC on 12.20. Received commitment from DCwater to write Change order, in progress

## 9. DBE or CBE PARTICIPATION SUMMARIES

**3. ATCS CBE / DBE Activity:**

- Hayat Brown LLC.: Provided Office Engineering and Inspection support for this project.
- Cube root: Provided Inspection support

**4. Fort Myer Construction Corp. DBE Activity:**

- Omni Excavators Inc.
- Den United LLC.
- DC Line
- Cooper landscaping
- Long Fence
- Capital Flexible pavement

## 10. ACCIDENTS/INCIDENT

- 1) Improper Bracing by Omni during excavation was reported to safety department

## 11. PHOTOS OF WORK PERFORMED THIS PERIOD



Verizon Subcontractor setting the vault manholes to grade





Capital Flexi Pave placing porous flexible pavement on NB 14<sup>th</sup> Street across from 1738 14<sup>th</sup> Street NW



Omni compacting the GAB at the pipe trench at SB 14<sup>th</sup> Street NW & R Street



Placing Flex Pavement



Omni potholing at 1910 14<sup>th</sup> Street NW



Omni saw-cutting the existing roadway at 1926 14<sup>th</sup> Street NW for potholing.



FMCC installing remaining granite curb at SEC of 14<sup>th</sup> & Fla Ave



FMCC preparing subgrade for PCC base repair along new bike lane.



PCC placement at bike lane along SEC of 14<sup>th</sup> & Fla. Ave



PCC Base at bus island broom finished



FMCC installing 3 section at L92/TS/PP



FMCC placing brick gutter at SEC of 14<sup>th</sup> & Fla. Ave



FMCC running cable from manhole M111



FMCC installing teardrop luminaire at L92/PP/TS



Omni demoed the existing pavement & PCC base at 1914 14<sup>th</sup> Street NW



FMCC unbagging the pedestrian signals at P Street & 14<sup>th</sup> Street NW



Omni pouring the thrust block for the water main at R Street & 14<sup>th</sup> Street NW





FMCC energizing the traffic signals at P Street & 14<sup>th</sup> Street NW



DEN pouring the proposed 4" PCC Sidewalk at the NW corner of T Street & 14<sup>th</sup> Street NW



DEN finishing the proposed 4" PCC Sidewalk at the NW corner of T Street & 14<sup>th</sup> Street NW



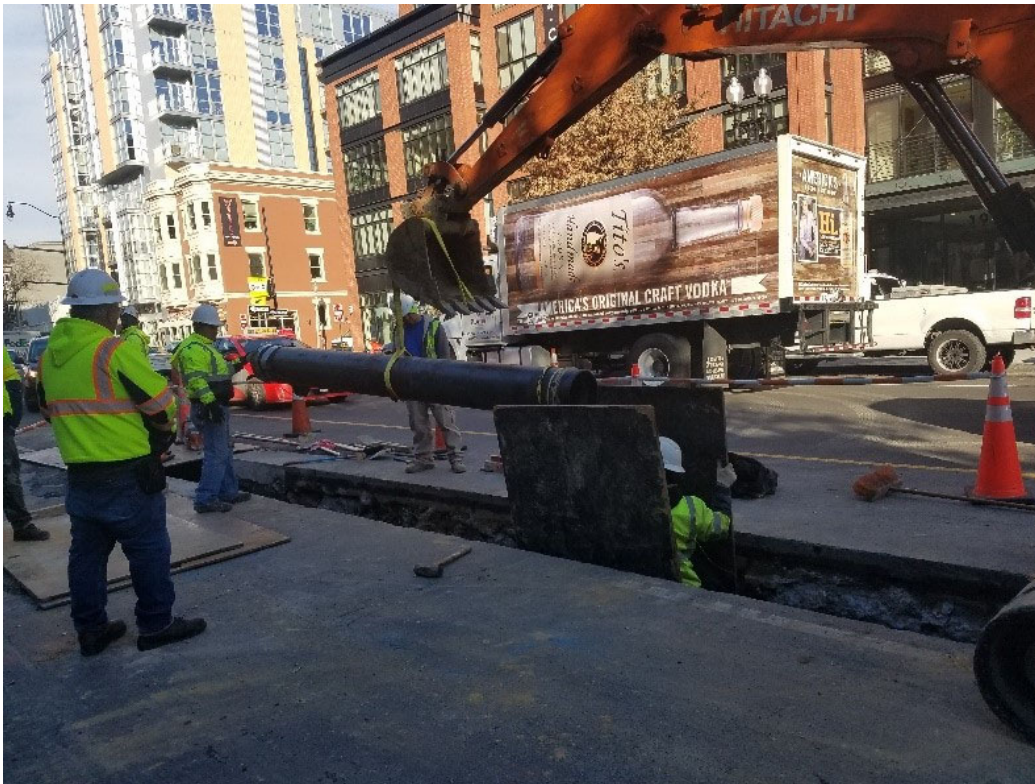
DEN demoing the existing sidewalk, brick curb, and granite curb at the NW corner of T Street & 14<sup>th</sup> Street NW



PCC Base placement of concrete underway



South view of PCC base placement completed



12" D.I.P. placed at new water main location on 14<sup>th</sup> St between T & U St southbound.



Omni at 14<sup>th</sup> St between T St and Wallach St excavating



FMCC electrical at NEC of 14<sup>th</sup> & V St



DEN excavating the Bio-Planter No.3 by hand due to the underground utility.



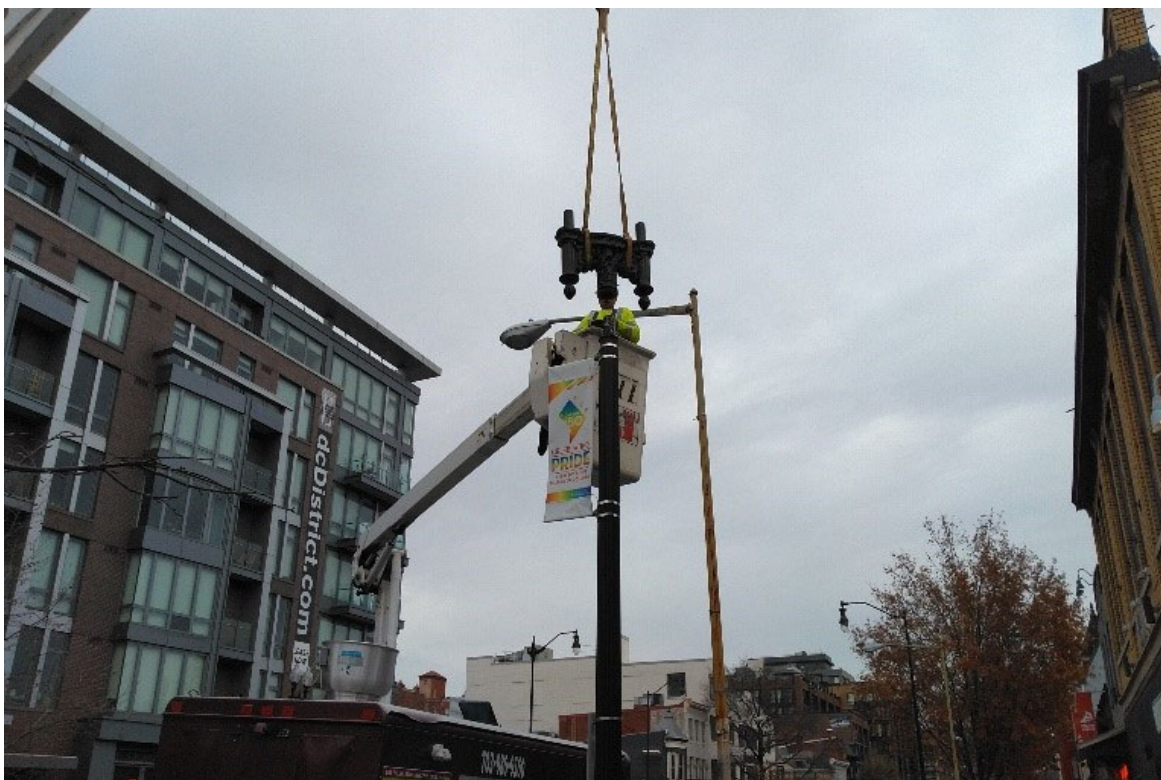
DEN lowered the 6" perforated PVC pipe in the Bio-Planter No.3 and not at manhole



DEN installing Brick Gutter at the corner of T Street and 14<sup>th</sup> Street NW



FMCC electrical crew splicing wire in the manhole at NB 14<sup>th</sup> Street NW and N Street



FMCC setting a cross arm on a light pole at 1800 14<sup>th</sup> Street NW



Omni excavating to remove two existing water valve manholes on NB 14<sup>th</sup> Street NW at R Street