

14th Street Streetscape Project N.W.
From Thomas Circle to Florida Ave
DC Contract No.: DCKA-2016-C-0043

FAP No.: STP-2016 (054)

CONSTRUCTION MANAGER'S
WEEKLY PROGRESS REPORT
11/05/2018 – 11/10/2018

Project Website: www.14thstreetproject.com



Installation of Permeable Pavers (Granite Cobble Stone) between N Street and Rhode Island Ave

1. EXECUTIVE SUMMARY

Project Description:

The scope of the construction work includes the followings:

- The removal and disposal of existing roadway pavement, curb and gutter and sidewalks, milling of existing asphalt pavement to the extents shown on plans.
- The resurfacing of existing asphalt pavement using 2" Superpave AC surface on 14th Street between Thomas Circle and Florida Ave as shown in the plans.
- The replacement of all curbs and gutters with Granite Curbs, 12" Brick Gutter, Concrete Sidewalk, Wheelchair/Bicycle Ramps, and Cobble Stone LID Paver, Bioretention Planters as shown on the plans or as directed.
- The removal and transportation to storage yard of Existing Traffic Signals and Light Poles as shown on plans. Traffic signal relocation and equipment upgrading of Traffic Signals at all intersections of 14th Street within the project limit as shown on plans.
- Streetscaping throughout the 14th Street corridor as shown in the plans.
- The installation of traffic signing and permanent pavement markings.
- Upgrading of street lighting throughout the 14th Street corridor as shown in the plans.
- Construction and upgrading of single catch basin, double catch basin, and triple catch basin.
- Construction / Upgrading of new Watermains, Fire Hydrants
- Full Reconstruction of R Street.
- Installation of new Bus Islands and bus pads as shown on the plans and as directed.
- The installation and use of erosion and sediment control measures as required.
- Mobilization and demobilization, performance of field layout, provision and maintenance of engineer's field facilities, progress photographs, and the proper maintenance of vehicular and pedestrian traffic during construction, including provision of all required construction warning and detour signs and traffic control devices.

Work by Others

The PEPCO manhole replacement or vault adjustments activities will be done by others approved by PEPCO. The ATCS CM team will coordinate all these activities with the Contractor and PEPCO.

2. STATUS OF CONSTRUCTION / PROGRESS SUMMARY

Progress Summary:

1. Omni onsite excavating and installing electrical conduits and manholes
2. DEN installing Granite Curb and Brick Gutter
3. DEN demoing and installing PCC Sidewalk
4. DEN installing Permeable Pavers (Granite Cobble Stones)
5. FMCC onsite providing MOT for Subcontractors

CM Community Outreach Activities

1. Connected with retailers and property owners in project corridor to provide updates and address any questions or concerns.
2. Project Website is up and running. Responded to email questions that came through Project Website.

3. ISSUES / ACTION ITEMS

- Ongoing Issues / Items: Bus Shelter Installation, PEPCO Manhole conflicts, R/W issue at 14th and S Street

- New Issues / Items:
- Action Items: Pepco working on conflicts (approx. 26) and give CM a report on time frame for design and corrections.
- Spoke with Carla Longshore from DDOT TDD. Need to reach back out to get assistance with Clear Channel and getting the Street Car Shelters

4. MEETINGS / PROJECT COORDINATION

Progress Meeting are schedule at the Field Office every Tuesday at 10:30am

5. DAILY WORK PERFORMED

Monday 11/05/2018

1. All activities were cancelled due to inclement weather

Tuesday 11/06/2018

1. All activities were cancelled due to inclement weather

Wednesday 11/7/2018

1. Omni excavated and encased 2" and 4" PVC Conduit between MH-94 to C68, MH-101 to MH-102, MH-94 to MH-96 MH-94 to MH-97
2. DEN installed new Brick Gutter between N Street and Rhode Island on the Westside
3. DEN continue with excavation and PCC Sidewalk Replacement between N Street and Rhode Island Ave
4. DEN began to install the permeable pavers (Granite Cobble Stone) between N Street and Rhode Island Ave
5. FMCC was onsite providing MOT for these operations

Thursday 11/08/2018

1. Omni installed MH-97 at the NW corner of 14th and W Street
2. DEN continue with the PCC Sidewalk Replacement between N Street and Rhode Island Ave
3. DEN installed one (1) Observation Well at 1314 14th Street pre plan
4. FMCC was onsite providing MOT for these operations

Friday 11/09/2018

1. Omni placed RC-6 material as backfill and placed temporary Asphalt between Florida and W Street on all electrical trenches that were complete for the holiday weekend
2. DEN cancelled operation due to the holiday work schedule
3. FMCC was onsite providing MOT for These operations

Saturday 11/10/2018

1. Omni continue to install 2" and 4" PVC conduit between MH-96 to MH-94, MH-97 to MH-94

- 2. FMCC was onsite providing MOT for this operation

6. INSPECTION & MATERIAL TESTS PERFORMED

- 11/07/18 11.5 CY of Class F concrete, 5" Slump, 6.2% Air, and four (4) cylinders

7. RFI's / SUBMITTALS

- Requests For Information:
 - o We have received 12 RFIs; 11 RFIs have been answered.
- Submittals:
 - o We have received 66 Submittals; 64 Submittals have been Approved

8. CHANGE ORDERS/TASK ORDERS

- o None

9. DBE or CBE PARTICIPATION SUMMARIES

- ATCS CBE / DBE Activity:
 - o Hayat Brown LLC.: Provided Office Engineering support for this project.
- ATCS CBE / DBE Activity
 - o Cube Root, Corp.: Providing an Electrical Inspector to support the project.
- Fort Myer Construction Corp. DBE Activity:
 - o Omni Excavators Inc.

10. ACCIDENTS / INCIDENTS

- None

11. PHOTOS OF WORK PERFORMED THIS PERIOD



Aggregate Base Material placement prior to PCC Sidewalk between N Street and Rhode Island Ave



PCC Sidewalk Replacement between N Street and Rhode Island Ave on Westside



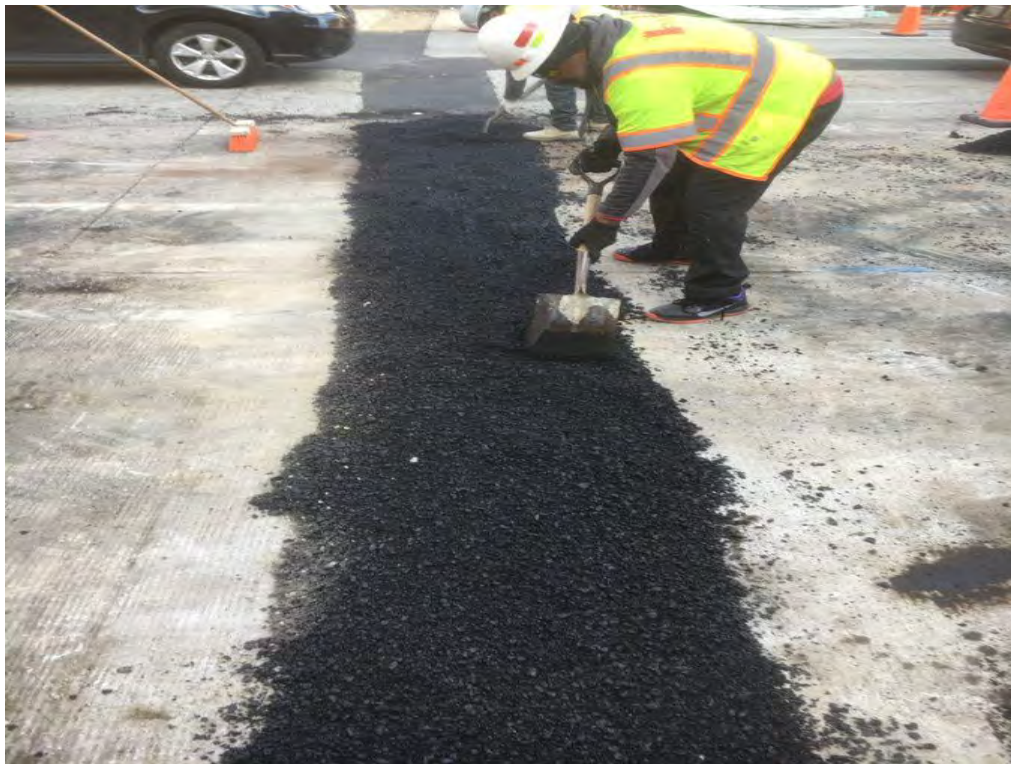
Installation of manhole at the NW Corner of W Street



Backfill of Encased Electrical Trench and placement of Electrical Tape



Formed Street Light Foundation



Placement of Temporary Asphalt over electrical trench