

14th Street Streetscape Project N.W. From
Thomas Circle to Florida Ave
DC Contract No.: DCKA-2016-C-0043

FAP No.: STP-2016 (054)

**CONSTRUCTION MANAGER'S
WEEKLY PROGRESS REPORT**
11/03/2019 - 11/09/2019

Project Website: www.14thstreetproject.com



FMCC Asphalt Division Milling operation covered the North-Bound Direction on 14th St. From R St. via Riggs, S St., T St. and Wallach Place to 75' North Intersection of T St. & 14th St. Intersection.

PREPARED BY Kendry A. Contreras

1. EXECUTIVE SUMMARY

Project Description:

The scope of the construction work includes the followings:

- The removal and disposal of existing roadway pavement, curb and gutter and sidewalks, milling of existing asphalt pavement to the extents shown on plans.
- The resurfacing of existing asphalt pavement using 2" Superpave AC surface on 14th Street between Thomas Circle and Florida Ave as shown in the plans.
- The replacement of all curbs and gutters with Granite Curbs, 12" Brick Gutter, Concrete Sidewalk, Wheelchair/Bicycle Ramps, and Cobble Stone LID Paver, Bioretention Planters as shown on the plans or as directed.
- The removal and transportation to storage yard of Existing Traffic Signals and Light Poles as shown on plans. Traffic signal relocation and equipment upgrading of Traffic Signals at all intersections of 14th Street within the project limit as shown on plans.
- Streetscaping throughout the 14th Street corridor as shown in the plans.
- The installation of traffic signing and permanent pavement markings.
- Upgrading of street lighting throughout the 14th Street corridor as shown in the plans.
- Construction and upgrading of single catch basin, double catch basin, and triple catch basin.
- Construction / Upgrading of new Watermains, Fire Hydrants
- Full Reconstruction of R Street.
- Installation of new Bus Islands and bus pads as shown on the plans and as directed.
- The installation and use of erosion and sediment control measures as required.
- Mobilization and demobilization, performance of field layout, provision and maintenance of engineer's field facilities, progress photographs, and the proper maintenance of vehicular and pedestrian traffic during construction, including provision of all required construction warning and detour signs and traffic control devices.

2. STATUS OF CONSTRUCTION / PROGRESS SUMMARY

Progress Summary:

1. Omni has a crew working on electrical work
2. DEN Demobilized
3. FMCC hardscape crew demobilized until situation with Ellisdale developer is resolved
4. Ellisdale developer didn't allow work at Florida
5. Electrician Continue with work on Light poles and pulling cable
6. Verizon moving the two manholes near R street, work has been delayed by FMCC because they are working on opposite lanes
7. Landscapers- Cooper demobilized, FMCC has work for them to complete and is not finished yet
8. Water Tie ins done .- R street – residential
9. Omni found location for storm drain in front of Winmar.
10. FMCC began Milling operation on NB lanes north of Riggs towards, U street (including intersection)

CM Community Outreach Activities:

11. TBA personnel continues to respond to questions that come through project portal.
12. Continue working with Businesses along R St. block. Red light Bar
13. Coordinated with the farmer's market for impacts due to milling operation
14. Walk with landscapers for areas already planted by owner's

3. QC/ ISSUES / ACTION ITEMS

- All work for PEPCO has been completed
- Developer Ellisdale at Florida and 14th Street didn't vacate, Public space issued Stop work order. No progress. Meeting scheduled for 11/12/2019
- DC water/ Pepco Conflict still hindering progress at the block of T and U street.
- Production has increased, Work by Omni is now part of the critical work, more resources are needed
- Ellisdale developer not cooperating is a big issue. FMCC had to demobilize it will impact that island and the striping in that location
- Coordinating with Verizon for their manhole offset near R street ongoing.
- Cold temperatures expected, reminded contractor of paving temperature restrictions.
- Multiple areas are unfinished that prevents the landscapers from completing their work (i.e. Cobble stone, PCC sidewalk, light pole and foundations)

ACTION ITEMS.-

Action	Description	Action By	Original Date	Expected Date	Status
001	Address the MOT, safety issues within the corridor.	FMCC/Kevin Felix	June 5, 2019	November 19, 2019	Ongoing
002	Submit bus shelters Clear Channel full acceptance documentation.	FMCC/John Constantino	June 14, 2019	November 19, 2019	Ongoing
003	Provide written document showing the potential danger with the installation of the handles for the grate placed IFO Cleaners at 1329 14 th Street	FMCC/John Constantino	July 30, 2019	November 19, 2019	Ongoing
004	Owner acceptance pending for the material delivery timeline for the cracked granite.	TBA/Jerrell Johnson	July 30, 2019	November 19, 2019	Ongoing
005	Mr. Said Chestnut to contact Mr. Jermaine Quattlebaum and start punch list for DC Water work.	ATCS/Said Chestnut and DC Water/ Jermaine Quattlebaum	August 06, 2019	November 19, 2019	Ongoing
006	Schedule a meeting with IPMD for the discussion about parking meter/Zip car signs	CM Team	September 10, 2019	November 19, 2019	Ongoing
007	Provide Long Fence price proposal for the handrail modification.	FMCC/Abdalla Elsheikh	October 8, 2019	November 19, 2019	Ongoing
008	Submit the new submittals for asphalt and concrete mixes for FY 2019.	FMCC/Abdalla Elsheikh	October 8, 2019	November 19, 2019	Ongoing
009	Update CM Team with the delivery schedule of the grate inlet	FMCC/Abdalla Elsheikh	October 22, 2019	November 19, 2019	Ongoing

010	Submit an RFI for the substitution of thermoplastic pavement for preformed tape at W Street.	FMCC/Abdalla Elsheikh	October 22, 2019	November 19, 2019	Ongoing
011	Verify with Mr. Olaore on the status of DC Water watermain relocation price proposal.	CM Team	October 22, 2019	November 19, 2019	Ongoing

4. MEETINGS/ PROJECTCOORDINATION

- New Progress Meeting are schedule at the Field Office every other Tuesday at 10:30am.
- 11/06/2019- Walk with Cooper landscaping, Outreach team and FMCC along the corridor from R street to Thomas Circle. Multiple areas changed and landscapers needed clarification. Some location have landscape done by the business owner, Outreach to engage them since some will be disrupted. Some conflict areas are because FMCC hasn't finished their work, skipped areas or is missing ap portion. FMCC to address. Two issues with existing tress was brought up, UFA to get involved.

5. DAILY WORK PERFORMED

Monday 11/04/2019

FMCC placed, water filled jersey barriers, traffic drums, cones and arrow board at 14th & R St for Omni Excavators electrical trench work.

D.E.N. worked at NWC 14th & R St excavating for tree zones followed by PCC sidewalk. Structural soil and aggregate base course were placed prior to PCC sidewalk placement.

FMCC installed pedestrian signals, teardrop fixtures and LED modules at R, S and Wallach St (TS22, TS24, TS26, TS28, TS58, L57 & L60) followed by burlap covering.

OMNI, Inc.:

1. Omni, Inc. poured 4.5 CY, Class B, DC-DoT, 4500 Structural Concrete for Trench-TS-DS Conduit (Ductbank) on Monday, they also delivered one (1) to Bus Island 1'x1'x2' Electric Concrete Foundation at Florida Ave.& 14th St.
2. Omni Trench Measurements total was:4 Ft X 3 Ft. X 38.5Ft. in Trench Measurement; Measured by Onsite Inspector and Omni, Inc. Foreman onsite.

Tuesday 11/05/2019

FMCC placed, water filled jersey barriers, traffic drums, cones and arrow board at 14th & R St for Omni Excavators electrical trench work.

D.E.N. worked at NWC 14th & R St excavating for permeable paver sidewalk, PCC sidewalk. Structural soil was placed prior to PCC sidewalk placement. (1) DCWater manhole was adjusted at permeable paver sidewalk location. Work today completed hardscape work by D.E.N. until water work is completed by Omni Excavators.

FMCC installed pedestrian signals, teardrop fixtures and LED modules at R, S and U St (TS23, TS42 & L59) followed by burlap covering.

Omni begin preparation of water main locations from 1357 & 1338 R St tie-in to existing main.

Wednesday 11/06/2019

FMCC placed, water filled jersey barriers, traffic drums, cones and arrow board at 14th & R St for Omni Excavators electrical trench work.

FMCC installed pedestrian signals, teardrop fixtures and LED modules at R, S and U St (L59, L72, L95, & L97) followed by burlap covering. Existing streetlight pole R46 and R71 were removed from R and U St. (Swann), and PCC sidewalk (R St.) (1) foundation was removed (R42) at SWC of R St as well.

Cooper Landscaping, Inc. crew continued panting on the North-Bound from Rhode Island thru mid-way toward Corcoran St. They continued planting Liriope Varigated (Light Green), and Liriope Big Blue-Green One Gallon Plants following the Landscaping plans and Drawings

Thursday, 11/07/2019

FMCC crew set up MOT early by 7 a.m. and Milling Operation began at 8 a.m. FMCC set up arrow boards, orange barriers and cones. During the morning Traffic was light, however, it got a bit busy and Moderately heavy 10 am hour thru 1 p.m. FMCC Super, MOT Manager and FMCC Safety reps were onsite; along with 6 Flag Persons at Intersection of 14th & Riggs, 14th & T, 14th St. & S St. However

FMCC Asphalt Division Milled the following sections or areas as follows:

14th St. NW—R St. to Riggs St, 14th St. NW-Riggs to S St, 14th St. S St. to Swann St, 14th St. Swann St. to T St T St. NW to Wallach Place, Bump-Out Riggs St. to S St. NW, Bump-Out S St. to T St. NW.

FMCC installed fixtures and 100-Watt photocell globes from Rhode Island Avenue to Corcoran St (L27, L28, L29, L35, L37, L40, L42 & L43) followed by burlap covering. Existing streetlight pole R46 and R71 were removed from R and U St.

Omni Excavators began excavation for catch basin CB-18 which has been changed to a single basin at 1712 14th St.

Friday, 11/08/2019

FMCC crew set up MOT early by 6:30 a.m. and Milling Operation began at 7:30 a.m. FMCC set up arrow boards, orange barriers and cones at R St.. T St. Wallach Place; and FMCC set Traffic Barriers and Cones plus NO Parking Signs from R St. thru 1919 Block Near U St. & 14th St. Intersection.

FMCC Asphalt division .- Milling Operation went per plan and there were no issues and problems and crew got 80% of the Milling was completed on Friday, 11-8-2019 except the Wallach Place East-Bound due to presence of 8 Illegally parked cars at Wallach Place. However, FMCC Asphalt crew did not Mill around the approximately 19 Utility Manholes at the Intersection of 14th St. and S St NW; and about 15 Utility Manholes at T & 14th Intersection

FMCC installed #10 & #86 wire from Corcoran to S St from each electric manhole (M41, M53, M61, M62 & M63) to (L54, L55, L56, L67, L68, L69, L70, L74, L75 & L80).

Omni Excavators completed tie-in to existing 6" water main at 1338 & 1357 R St. Measurements for 8" main

Saturday, 11/09/2019

FMCC crew set up MOT early by 6 a.m. and Milling Operation began at 7 a.m. FMCC set up arrow boards, orange barriers and cones. During the morning Traffic was light, however, it got a bit busy and heavy toward the 11 am hour thru 1 p.m. FMCC Super, MOT Manager and FMCC Safety reps were onsite; along with 4 Flag Persons at Intersection of 14th & U St. Also the traffic volume was a little heavier than usual Saturday morning due to Farmers market vendors at Frank Reeves Municipal Courtyard and Peds and Vehicle Traffic.

FMCC – Asphalt division.- The Milling Operation went per plan and there were no issues and problems and crew got 90% of the Milling done by Noon. However, FMCC Asphalt crew did not Mill around the approximately 25 Utility Manholes at the Intersection of 14th St. and U St NW.

Omni Excavators worked at NB 14th St near R St excavating for trench of existing 4" PVC to be connected to newly located M49 at center of intersection. Work was not completed and was covered by steel plating until 11/12/19. Second crew backfilled water main tie-in locations at 1357 R St at north and south side of R St. Sidewalk locations were backfilled according to specifications and top with asphalt.

7. RFI's/SUBMITTALS

1. Requests for Information:

- To date, we have received **38** RFIs; **38** RFIs have been answered.

2. Submittals:

- We have received **84** Submittals; **84** Submittals have been Approved.

8. CHANGE ORDERS/TASK ORDERS

- Received signed CO submitted for missing ITS fiber items. DDOT court for execution
- Received signed CO submitted for extra fittings for water main work. DDOT court for execution
- FMCC to revise overhead cost (field office, MOT...) change order for 6 month contract extension. Received breakdown, CM recommended not approval because FMCC is including OH for other project. Forwarded to DDOT. ATCS provided engineer's estimate and PCO to DDOT waiting for Green light to begin negotiations
- Received FMCC proposal for PEPCO manhole vertical adjustments. Price negotiation held, Received revised price. CO send to FMCC for signature
- Waiting for ATCS MOD 3 Additional funding to continue inspection services in October
- Price breakdown for add water work received from FMCC. Tie-in were priced separately. Waiting for direction from DDOT
- Waiting for price proposal for offset of handrail bus islands

9. DBE or CBE PARTICIPATION SUMMARIES

3. ATCS CBE / DBE Activity:
 - Hayat Brown LLC.: Provided Office Engineering and Inspection support for this project.
 - Cube root: Provided Inspection support
4. Fort Myer Construction Corp. DBE Activity:
 - Omni Excavators Inc.
 - Den United LLC.
 - DC Line
 - Cooper landscaping
 - Long Fence

10. ACCIDENTS/INCIDENT

No incidents or accidents to report

11. PHOTOS OF WORK PERFORMED THIS PERIOD



FMCC Asphalt crew Milling Operation In-Progress on Thursday, 11-7-2019 from R St. thru S St. to T St. and Wallach Place at 14th St. NW Corridor.



FMCC Asphalt crew also saw cut the exposed portion of Old Track Metal Railing eliminating a potential Roadway Hazardous condition, on Thursday, 11-7-2019.



FMCC Broom Truck swept the dust and debris continuously to eliminate dust and debris along 14th St. NW during the Milling Operation on Thursday, 11-7-2019.



FMCC will raise the Utility Manhole Cover & they will fix the damaged Brick Gutter prior to Asphalt Pavement operation.



FMCC Milling operation in-progress at T st. NW at East Bound Near 14th St. & T St. Intersection on Friday, 11-8-2019.



OMNI, Inc. secured and Welded total Ten (10) Steel Plates on Saturday, 11-9-2019 at Intersection of R St. & 14th covering the Traffic Signal Trench NB.



FMCC Asphalt Division Milling Operation In-Progress at U St. & 14th St. near 2001 Block at Subway.



FMCC Milling Machine Milled near the Cross at Intersection U St. & 14th St. NW near Capital One 1947 Block of U St. NW.



Luminaire installation at L60 at SEC of 14th & R St



PCC sidewalk placement by D.E.N. at 1712 14th St



Brick gutter was placed at NWC of 14th & R St.



FMCC electrical crew adjusting signals at R St



Omni at 1338 14th St preparing water main for tie-in



Backfill of trench and removal of steel plate by Omni.



Granite curb brick gutter placed at 1700 14th St



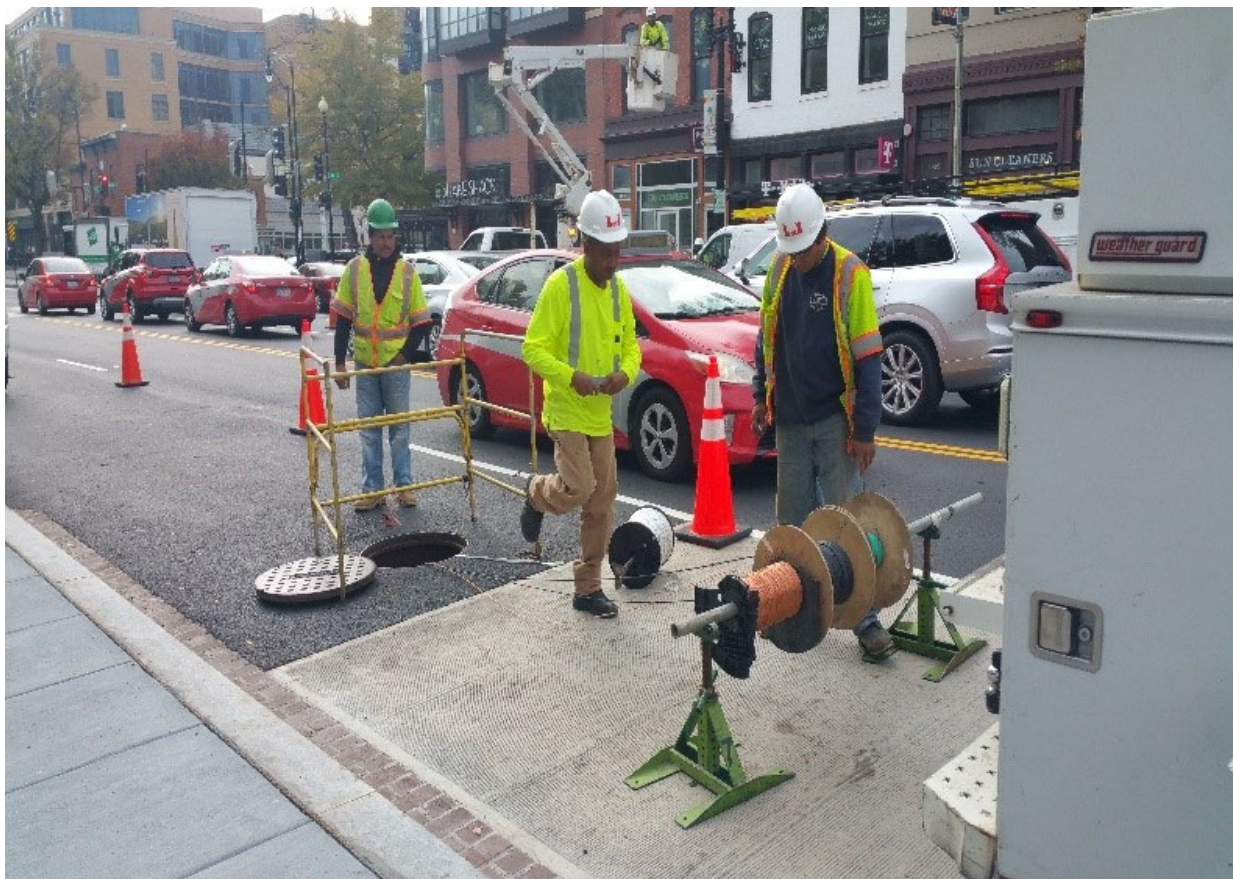
Excavation at NWC of 14th & R St for curb and gutter
Cooper Landscaping crew placed Planting Soil Mix near Corcoran St. & 14th St NW at NB.



Omni excavating for single catch basin CB-18 at 1712 14th St



Installation of globe at twin pole L27



FMCC pulling #8 & #10 cable from manhole M19 to L28



Omni excavating for connection to 6" tie-in at 1357 R St



Existing 6" main to be connected to new 8" main by Omni



Excavation for tie-in to existing 6" main



Tie-in completed at 1357 R St



Excavation of electrical conduit trench by Omni from M49



Trench excavation continued by Omni from M49



Asphalt placed at 1357 14th St water main tie-in.