

14<sup>th</sup> Street Streetscape Project N.W. From  
Thomas Circle to Florida Ave  
DC Contract No.: DCKA-2016-C-0043

FAP No.: STP-2016 (054)

---

**CONSTRUCTION MANAGER'S  
WEEKLY PROGRESS REPORT**  
9/08/2019 - 9/14/2019

---

**Project Website:** [www.14thstreetproject.com](http://www.14thstreetproject.com)



DEN Placed DC-DoT Class E with Roadway Dowels, WWF (6X6) Wire Mesh at 14<sup>th</sup> & W St. SWC.

**PREPARED BY Kendry A. Contreras**

## 1. EXECUTIVE SUMMARY

### Project Description:

The scope of the construction work includes the followings:

- The removal and disposal of existing roadway pavement, curb and gutter and sidewalks, milling of existing asphalt pavement to the extents shown on plans.
- The resurfacing of existing asphalt pavement using 2" Superpave AC surface on 14<sup>th</sup> Street between Thomas Circle and Florida Ave as shown in the plans.
- The replacement of all curbs and gutters with Granite Curbs, 12" Brick Gutter, Concrete Sidewalk, Wheelchair/Bicycle Ramps, and Cobble Stone LID Paver, Bioretention Planters as shown on the plans or as directed.
- The removal and transportation to storage yard of Existing Traffic Signals and Light Poles as shown on plans. Traffic signal relocation and equipment upgrading of Traffic Signals at all intersections of 14<sup>th</sup> Street within the project limit as shown on plans.
- Streetscaping throughout the 14<sup>th</sup> Street corridor as shown in the plans.
- The installation of traffic signing and permanent pavement markings.
- Upgrading of street lighting throughout the 14<sup>th</sup> Street corridor as shown in the plans.
- Construction and upgrading of single catch basin, double catch basin, and triple catch basin.
- Construction / Upgrading of new Watermains, Fire Hydrants
- Full Reconstruction of R Street.
- Installation of new Bus Islands and bus pads as shown on the plans and as directed.
- The installation and use of erosion and sediment control measures as required.
- Mobilization and demobilization, performance of field layout, provision and maintenance of engineer's field facilities, progress photographs, and the proper maintenance of vehicular and pedestrian traffic during construction, including provision of all required construction warning and detour signs and traffic control devices.

## 2. STATUS OF CONSTRUCTION / PROGRESS SUMMARY

### Progress Summary:

1. FMCC demobilize its subcontractors (Omni, Den) for couple days
2. FMCC sign crews on site installing small signs
3. DEN continue with Sidewalk work at Florida Ave.
4. Omni continues water main installation work at 14<sup>th</sup> St. NW & R St. Omni Pressure testing failed 3 times, still looking for leaks.
5. PEPCO contractors continue work at Riggs, start work at Florida Street.

### CM Community Outreach Activities:

1. No complains were noted this week
2. TBA personnel continues to respond to questions that come through project portal.
3. Continue working with Businesses along Florida St. block.

3. QC/ ISSUES / ACTION ITEMS

- PEPCO utility conflicts identified at ~ approximately 7 locations:
  - 14th & Riggs – has already started since ~ 08/05/2019. Project duration is ~1month. Schedule completion 10/15
  - 14th & U – There are three (3) manholes that need vertical adjustment vs. one (1) previously identified. Waiting for vertical adjustment price from FMCC
  - FMCC is working to relocate an electric man-hole vault at 1720-1722 14th St. as a PEPCO subcontractor.Ongoing
- Developer Ellisdale at Florida and 14<sup>th</sup> Street must vacate the staging area and sidewalk to complete that section. Meeting was held with the owner explaining the consequences of not meeting that deadline
- DC water/ Pepco Conflict still hindering progress at the block of T and U street.
- Contractor has significantly slowed down, pulled their subs to go to other projects

**ACTION ITEMS.-**

Action	Description	Action By	Original Date	Expected Date	Status
001	Address the MOT, safety issues within the corridor.	FMCC/Kevin Felix	June 5, 2019	September 24, 2019	Ongoing
002	Submit bus shelters Clear Channel full acceptance documentation.	FMCC/John Constantino	June 14, 2019	September 24, 2019	Ongoing
003	Address the issues with cracked/missing sidewalk sections	FMCC	July 2, 2019	September 24, 2019	Ongoing
004	Address DC Water's issue that DEN is covering their curb stops, between R and T Streets.	FMCC/DEN	July 2, 2019	September 24, 2019	Ongoing
005	Insert the missing valve cover at 1724 14 <sup>th</sup> Street NW	FMCC	July 5, 2019	September 24, 2019	Ongoing
006	FMCC to provide some type of handle for the grate placed IFO Cleaners at 1329 14 <sup>th</sup> Street	FMCC/John Constantino	July 30, 2019	September 24, 2019	Ongoing
007	FMCC to resolve the cracked granite, contact insurance, and follow up with the businesses.	FMCC/Abdalla Elsheikh	July 30, 2019	September 24, 2019	Ongoing
008	Mr. Said Chestnut to contact Mr. Jermaine Quattlebaum and start punch list for DC Water work.	ATCS/Said Chestnut and DC Water/ Jermaine Quattlebaum	August 06, 2019	September 24, 2019	Ongoing
009	Address the comments regarding the pricing for the 4 extra poles	FMCC/Shaddy Abdelaal	August 13, 2019	September 24, 2019	Ongoing
010	RFI-16, CB-25 conflict on T Street. Provide a sketch with the proposed solution	FMCC/John Constantino	August 13, 2019	September 24, 2019	Ongoing

	RFI-16, CB-25 conflict on T Street. Provide a write-up on the proposed solution	DC Water/ Jermaine Quattlebaum	August 13, 2019	September 24, 2019	Ongoing
012	Provide PEPCO a price proposal for the vertical adjustments within the corridor.	FMCC/John Constantino	August 27, 2019	September 24, 2019	Ongoing
013	RFI for the fire hydrant conflict at the Zipcar parking sign at northeast side of Q Street	FMCC/Abdalla Elsheikh	August 27, 2019	September 24, 2019	Ongoing
014	FMCC to sign CO#2 and CO#3 for DDOT approval.	FMCC/Cesar Casanova	August 27, 2019	September 24, 2019	Ongoing
015	Site visit with Mr. Cesar Barreto, ADA Specialist for the vault slope	CM/Kendry Contreras	August 27, 2019	September 24, 2019	Ongoing
016	Schedule a meeting with IPMD for the discussion about parking meter/Zip car signs	FMCC/John Constantino	September 10, 2019	September 11, 2019	New
017	Forward Omni's pressure test, bacterial sample and chlorination proposal to DC Water	FMCC/Abdalla Elsheikh	September 10, 2019	September 11, 2019	New
018	RFI-37, Bioretention 2. Test pit for utility conflict.	FMCC/John Constantino	September 10, 2019	September 11, 2019	New
019	Place the purchase order for the ITS components.	FMCC/Shaddy Abdelaal	September 10, 2019	September 10, 2019	New
020	Site meeting schedule with DC Water/CM Team for the work sequence at R Street intersection.	FMCC/Shaddy Abdelaal	September 10, 2019	September 13, 2019	New
021	Schedule with CM Team to meet with FMCC scheduler in person	FMCC/Cesar Casanova	September 10, 2019	September 13, 2019	New

#### 4. MEETINGS/ PROJECTCOORDINATION

- New Progress Meeting are schedule at the Field Office every other Tuesday at 10:30am.
- Meeting on site at the NE corner of R street and 14th Street to address the sequence of that intersection. **Water work is critical.** Omni was reminded by FMCC to finish ASAP so they can continue with the bus island and the bump out in that intersection

#### 5. DAILYWORK PERFORMED

##### Monday 9/9/2019

**FMCC & DEN:** Set up MOT at 14th & Thomas Cir, 14th & R St. and 14th & Wallach and 14th & U St. in NB and SB directions. FMCC crew also Set up MOT at 14th & W St. NW for FMCC Pepco Crew Work Zone; FMCC work on Common Excavation for Bus Island at 14th & R at the Curb-Parking Lane plus the Sidewalk. FMCC set arrow board near intersection of Florida Ave. and 14th St. Intersection approx.. 100 Ft. North of Construction Zone on NWC of Florida Ave & 14th St. FMCC and DEN closed off the Sidewalk at 1405 and South-West Corner of 14th & W St. Intersection; while the Class E partial Roadway next to Bump-out also at Crosswalk .

**PEPCO:**

PEPCO Contractor Stealth Const. worked on proposed abandoned PePCO Manhole at 2220 Block of 14th St.; the PEPCO MH will be connected via new conduct-Duct Bank with the EX-PEPCO MH approx. 25 Ft. North of to abandoned MH Near Intersection of Florida Ave. and 14th St. Stealth Const. Crew opened and removed the Steel plates and began saw cut of PCC Base for Power Conduits were connected with adjacent MH near FL Ave & 14th St. Intersection. The Manhole Power connection from Abandoned Pepco MH to EX-MH (approx. 25' Offset North the abandoned MH) which will be punch holed and backfilled with RC-6 material by PEPCO crew.

**FMCC** continued removing existing ground mounted signs and installing new signs as well from Q to R St

**Omni Excavators** was onsite working at westbound R St between 13th & 14th St working on 8" water main 8" Plug was removed and replaced with standpipe.

**D.E.N.** Construction activities included placement of 18 Cubic Yards of PCC 10"Depth for Roadway with Mesh-Wire (6x6) Welded Wire Fabric (WWF); plus Roadway Dowels at 15" On-Center drilled into EX-PPC Base. DEN placed GAB and Borrow Embankment (10" Depth) in the Excavated area and Bumped out areas, plus 4" GAB (Aggregate Base) which was compacted by Jumping Jack and Smooth tamper prior to the placement of Plastic Vapor Barrier and Class F, PCC Sidewalk concrete. Also placed Brick Gutter and Straight Granite Stones near Intersection of W St. and 14th St. NW.

**Tuesday 9/10/2019**

**FMCC** Set up MOT at 14th & Thomas Cir, 14th & R St. and 14th & Wallach and 14th & U St. in NB and SB directions. FMCC crew also Set up MOT at 14th & W St. N.W. for FMCC Pepco Crew Work Zone; From Thomas Cir. Thru Florida Ave & 14th St. Intersection. The MOT Const. Work-zone area were: R St. NW & 14th St. (OMNI Inc.): at 1721 14th St. Near Intersection of Riggs St. and 14th St. NW (FMCC-PEPCO Work Crew); and at W St. and 14th St. as well as 14th St. NW and Florida Ave. for DEN construction activities between W St. and Florida Ave on 14th St. South-Bound.

**FMCC** continued removing existing ground mounted signs and installing new signs as well from Q to R St:

**D.E.N.** Construction activities included: Placement of Borrow Embankment, placement of Structure Sand-Based materials, Quantities TBD; One manhole adjustments; placement of Straight Granite; placement of Radial-Circular Granite; Replacement of a Existing Wheel Chair Ramp at 14th ST NW with a New W.C. Ramp facing East-Bound. The construction activities included placement of Gab, Wire-Mesh, Roadway Dowels for 10" PCC for Roadway at SWC of 14th NW & W St. NW. DEN placed a total of 18 Cubic Yards of PCC-Base 10" which also included Common Excavation for Bump-out areas and 2 FT-Wide for Brick Gutter and Granite stones.

Please note the work activities by DEN also included placement of Permeable Marble Stone Pavers as well as placement of Structural Sand-Based Soil under the Permeable Stone areas plus the Green-Landscaping areas.

**Omni Excavators** was not onsite today.

**Wednesday 9/11/2019**

**FMCC** set up MOT at 14th & Thomas Cir, 14th & R St. and 14th & Wallach and 14th & U St. in NB and SB directions. FMCC crew also Set up MOT at 14th & W St. N.W. for FMCC Pepco Crew Work Zone; From Thomas Cir. Thru Florida Ave & 14th St. Intersection. The MOT Const. Work-zone area were: R St. NW & 14th St. (OMNI Inc.): at 1721 14th St. Near Intersection of Riggs St. and 14th St. NW (FMCC-PEPCO Work Crew); and at W St. and 14th St. as well as 14th St. NW and Florida Ave. for DEN construction activities between W St. and Florida Ave on 14th St. South-Bound. .

**D.E.N.** Construction activities included: Placement of Borrow Embankment, placement of Structure Sand-Based materials, Quantities TBD; One manhole adjustments; placement of Straight Granite; placement of Radial-Circular Granite; Replacement of a Existing Wheel Chair Ramp at 14th ST NW with a New W.C. Ramp facing East-Bound. The construction activities included placement of Gab, Borrow Embankment for Sidewalk PCC at 2300 Block 14th St. NW across from 7-Eleven Store; at SWC of 14th NW & Florida Ave. NW. DEN placed a total of 9 Cubic Yards, Class F (3500PSI) Monumental Concrete for Sidewalks on Top of Vapor Barrier and compacted 4" GAB (Aggregate Base).

**FMCC.** No sign crew was onsite and is scheduled to return on 9/12/19.

**Omni Excavators** was onsite to continue pressure test started yesterday but was not completed due to defective test gauge. Work is scheduled continue once certified test gauge is available.

**Thursday, 9/12/2019**

**FMCC** set up MOT at 14th & Thomas Cir, 14th & R St. and 14th & Wallach and 14th & U St. in NB and SB directions. FMCC crew also Set up MOT at 14th & W St. N.W. for FMCC Pepco Crew Work Zone; From Thomas Cir. Thru Florida Ave & 14th St. Intersection. The MOT Const. Work-zone area were: R St. NW & 14th St. (OMNI Inc.): at 1721 14th St. Near Intersection of Riggs St. and 14th St. NW (FMCC-PEPCO Work Crew); and at W St. and 14th St. as well as 14th St. NW and Florida Ave. for DEN construction activities between W St. and Florida Ave on 14th St. South-Bound.

**D.E.N.** United worked at NWC of 14th & Florida Avenue and saw-cut existing PCC pavement and began preparation of PCC placement including placement of granite curb and brick gutter placement.

**D.E.N.** Construction activities included: Placement of Borrow Embankment, placement of Structure Sand-Based materials, Quantities TBD; One manhole adjustments; placement of Straight Granite; placement of Radial-Circular Granite; Replacement of an Existing Wheel Chair Ramp at 14th ST NW with a New W.C. Ramp facing East-Bound. The construction activities included placement of Gab, Borrow Embankment for Sidewalk PCC at 2300 Block 14th St. NW across from 7-Eleven Store; at SWC of 14th NW & Florida Ave. NW. DEN placed a total of 9 Cubic Yards, Class F (3500PSI) Monumental Concrete for Sidewalks on Top of Vapor Barrier and compacted 4" GAB (Aggregate Base). DEN placed a cum 13 Cubic Yards for PCC Base 10",

**Omni Excavators** was onsite to continue pressure test started yesterday but was not completed due to testing equipment not onsite. Work is scheduled continue once certified test gauge is available.

**Friday, 9/13/2019**

**FMCC** set up MOT at 14th & Thomas Cir, 14th & R St. and 14th & Wallach and 14th & U St. in NB and SB directions. FMCC crew also Set up MOT at 14th & W St. N.W. for FMCC Pepco Crew Work Zone; From Thomas Cir. Thru Florida Ave & 14th St. Intersection. The MOT Const. Work-zone area were: R St. NW & 14th St. (OMNI Inc.): at 1721 14th St. Near Intersection of Riggs St. and 14th St. NW (FMCC-PEPCO Work Crew); and at W St. and 14th St. as well as 14th St. NW and Florida Ave. for DEN construction activities between W St. and Florida Ave on 14th St. South-Bound.

**D.E.N.** Construction activities included: The placement of 13 Cubic Yards, Class E for PCC 10" & 12" near 2300 Block 14th St. NW & Florida Crosswalk. DEN also placed 5 Cubic Yds of Class F for PCC Sidewalk adjacent to Cobble Stone Permeable Ponds; The crew placed and Installed Brick Gutter as well as Curved-Radius and Straight Granite. The construction activities included placement of Gab, Borrow Embankment for Sidewalk PCC at 2300 Block 14th St. NW across from 7-Eleven Store; at SWC of 14th NW & Florida Ave. NW. DEN placed a total of 9 Cubic Yards, Class F (3500PSI) Monumental Concrete for Sidewalks on Top of Vapor Barrier and compacted 4" GAB (Aggregate Base). The crew placed #8 as well as Structural Sand 18" below the #8 Stone for Permeable Stone Ponds plus and Tree Boxes.

**Omni Excavators** was onsite to continue pressure test started yesterday but was not completed due to pressure valve losing pressure.

**Saturday, 9/14/2019**

**FMCC** had **OMNI** planned to work but Friday afternoon they announced that work will be cancelled. **No other work scheduled**

**6. INSPECTION&MATERIAL TESTS PERFORMED****Monday 09/10/2019.**

4 Cylinders for 7-Day and 28-Day Lab per Compressive Strength Testing for Class E, 3500SPI w.HRWR; a cumulative of 18 Cubic Yards was placed by DEN. The Concrete Temp was 81 F Degrees, the Ambient Temp was=84 F; The Class E Slump was 4.5"; while the Air for Concrete tested was 4.1%

**PCC 12" Sidewalk Saw Cut Issue:** 14th St. & Florida Ave. Intersection Near 2300 Block: FMCC Saw Cut crew did cut the 12" Existing PCC Base Layout and Saw Cut which was not exactly matched the usual Concrete Control Joint and depth of the actual Saw Cut varied in depth from 7" to 9" ; Exceeded beyond the usual Control Joint Line; as was shown by visible Key Line at adjacent PCC Concrete sections plus the WWF (6X6) Wire Mesh sections where saw cut by Crew. However, Per DEN and FMCC Reps; apparently this issue will be remedied and fixed by placing additional Roadway Dowels to be Drilled into Existing PCC Base; the placement of new Wire Mesh Reinforcing for proposed 12" Base Concrete, Class E.

**7. RFI's/SUBMITTALS****1. Requests for Information:**

- To date, we have received **37** RFIs; **35** RFIs have been answered.

**2. Submittals:**

- We have received **82** Submittals; **82** Submittals have been Approved.

**8. CHANGE ORDERS/TASK ORDERS**

- CO submitted to FMCC for missing ITS fiber items. Waiting for their signature
- CO submitted to FMCC for extra fittings for water main work. Waiting for their signature
- FMCC to revise overhead cost (field office, MOT...) change order for 6month contract extension.
- FMCC to revise their request for material adjustment 4 light poles
- Pending proposal FMCC for PEPCO manhole vertical adjustments

**9. DBE or CBE PARTICIPATION SUMMARIES****3. ATCS CBE / DBE Activity:**

- Hayat Brown LLC.: Provided Office Engineering and Inspection support for this project.
- Cube root: Provided Inspection support

**4. Fort Myer Construction Corp. DBE Activity:**

- Omni Excavators Inc.
- Den United LLC.
- Long Fence

**ACCIDENTS/INCIDENT**

- No accidents or incidents to report



## 11. PHOTOS OF WORK PERFORMED THIS PERIOD



DEN Placed 18 C.Y. PCC Base 10" at SWC of 14<sup>th</sup> St. NW & W St. NW Intersection on Mon 9-9-2019.



D.E.N crew excavated; then placed PCC Base 18 Cubic Yards, Class E Near 1405 W St. & 14<sup>th</sup> St. NW.



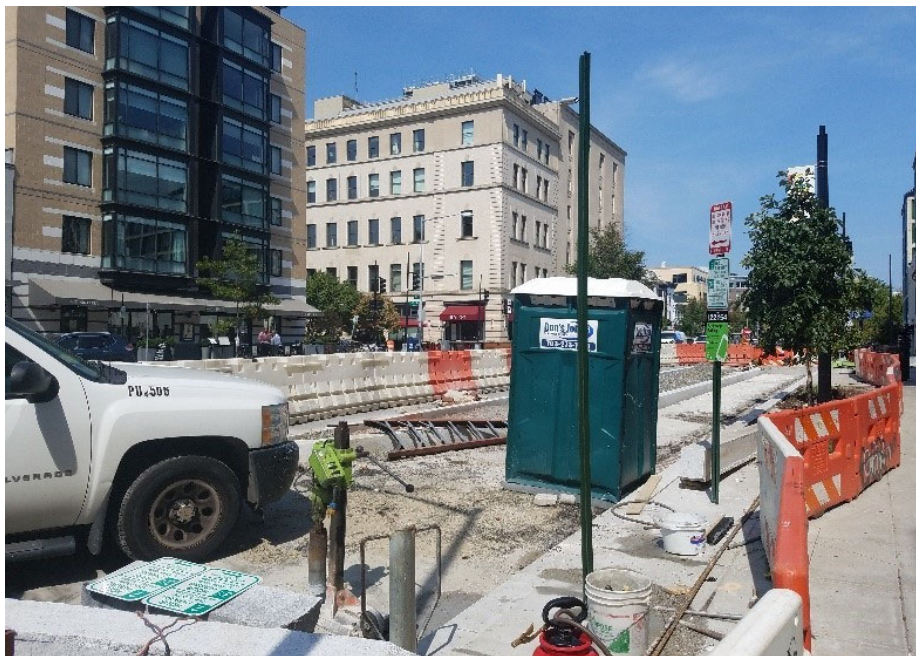
D.E.N. excavated the Bump-out area & placed PCC-Base 10" Class E with Mesh-Wire & Dowels at 14<sup>th</sup> St. NW.



FMCC Sign crew



Omni removing 8" plug and installing standpipe.



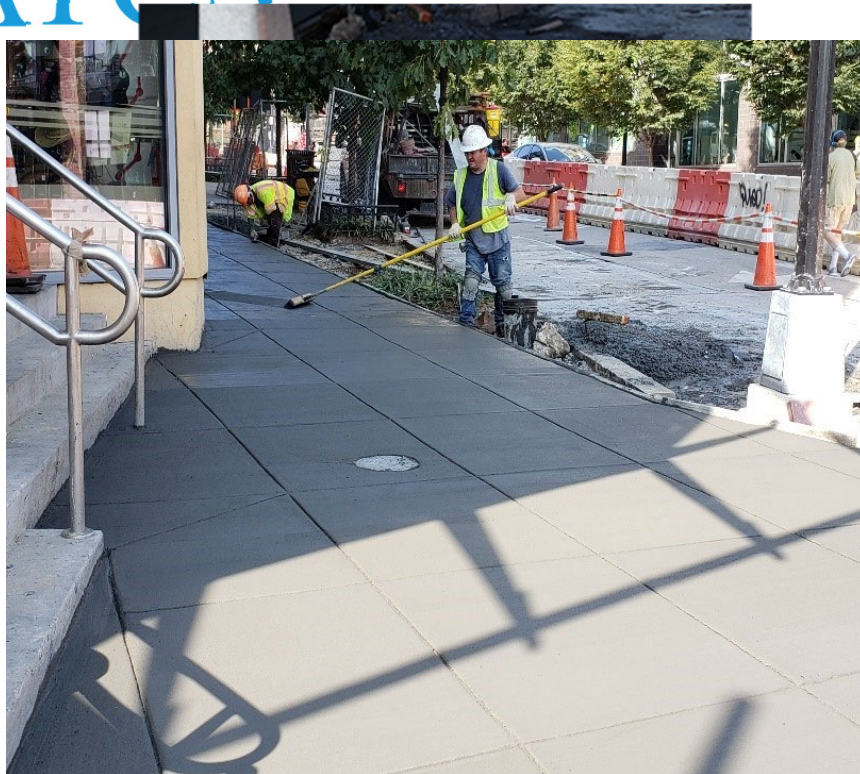
FMCC sign crew at 1600 block of 14<sup>th</sup> St.



DEN Crew placed Roadway dowels drilled into existing PCC Base along with WWF (Wire-Mesh) for Reinforcing of PCC 10" Base.



DEN Crew installed Permeable Cobble Stone next Sidewalk topped off with # 8 materials.



D.E.N placed a Temp Ramp and Temp Pathway for Peds and Customers per MOT plans.at 14<sup>th</sup> St. NW & FL Ave.



Pressure test incomplete due to defective test gauge.



DEN placed PCC Sidewalk at 2300 Block in Front of 7-Eleven Store at 14<sup>th</sup> St. NW.





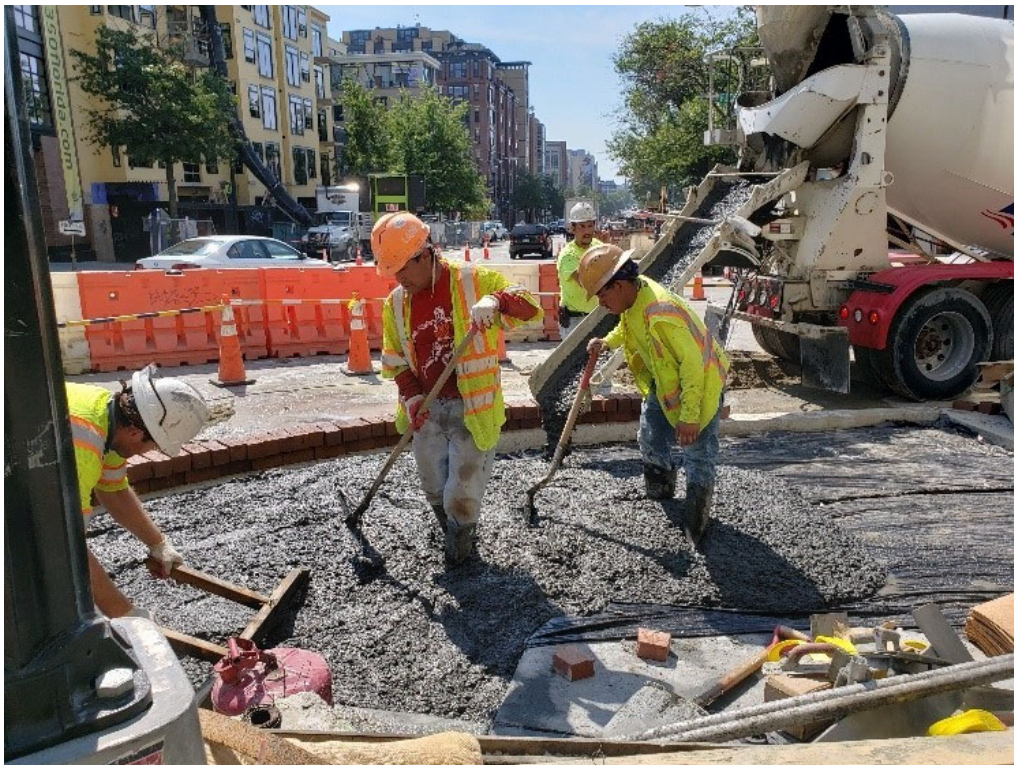
Pressure test gauge connected to standpipe at NB 14<sup>th</sup> St



DEN crew also placed Brick Gutter at SWC of Near 2300 Block 14<sup>th</sup> St. NW.



D.E.N crew placed Dry Mix, the installed a total of 74 LF of Straight Granite Stone at 14<sup>th</sup> St. NW.



DEN crew Placed Class F, 3500PSI for PCC Sidewalk Near SWC of Intersection at 2300 Block. .





DEN Crew placed PCC-Base 10" section poured ranged in width between 3 Ft and 7 Ft.; at 14<sup>th</sup> St. NW.



DEN Crew placed GAB 6" in Depth for PCC 10" plus vapor barriers and Dowels at 14<sup>th</sup> St. NW & Florida Ave.



DEN placed 4" GAB, and PCC Sidewalk next to Permeable Stone and Tree Boxes at 14<sup>th</sup> St. & FL Ave.



Stand pipe valve at northbound 14<sup>th</sup> St connected to pressure gauge.