

**14th Street Streetscape Project N.W. From
Thomas Circle to Florida Ave
DC Contract No.: DCKA-2016-C-0043**

FAP No.: STP-2016 (054)

**CONSTRUCTION MANAGER'S
WEEKLY PROGRESS REPORT
6/24/2019 - 6/29/2019**

Project Website: www.14thstreetproject.com



PCC sidewalk placed at NEC of 14th & S St.

PREPARED BY Kendry A. Contreras

1. EXECUTIVE SUMMARY

Project Description:

The scope of the construction work includes the followings:

- The removal and disposal of existing roadway pavement, curb and gutter and sidewalks, milling of existing asphalt pavement to the extents shown on plans.
- The resurfacing of existing asphalt pavement using 2" Superpave AC surface on 14th Street between Thomas Circle and Florida Ave as shown in the plans.
- The replacement of all curbs and gutters with Granite Curbs, 12" Brick Gutter, Concrete Sidewalk, Wheelchair/Bicycle Ramps, and Cobble Stone LID Paver, Bioretention Planters as shown on the plans or as directed.
- The removal and transportation to storage yard of Existing Traffic Signals and Light Poles as shown on plans. Traffic signal relocation and equipment upgrading of Traffic Signals at all intersections of 14th Street within the project limit as shown on plans.
- Streetscaping throughout the 14th Street corridor as shown in the plans.
- The installation of traffic signing and permanent pavement markings.
- Upgrading of street lighting throughout the 14th Street corridor as shown in the plans.
- Construction and upgrading of single catch basin, double catch basin, and triple catch basin.
- Construction / Upgrading of new Watermains, Fire Hydrants
- Full Reconstruction of R Street.
- Installation of new Bus Islands and bus pads as shown on the plans and as directed.
- The installation and use of erosion and sediment control measures as required.
- Mobilization and demobilization, performance of field layout, provision and maintenance of engineer's field facilities, progress photographs, and the proper maintenance of vehicular and pedestrian traffic during construction, including provision of all required construction warning and detour signs and traffic control devices.

Work by Others

The PEPCO manhole replacement or vault adjustments activities will be done by others approved by PEPCO. The ATCS CM team will coordinate all these activities with the Contractor and PEPCO.

2. STATUS OF CONSTRUCTION / PROGRESS SUMMARY

Progress Summary:

1. Omni onsite excavating and installing electrical conduits and manholes
2. Omni excavating and install new water main, Water service and Fire Hydrants for DC Water.
3. Den installing PCC Sidewalk, Granite Curb, Brick Gutter, ADA Ramps
4. FMCC Electrical Installing Traffic Signal Poles, Transformer Bases, Traffic Control Cabinets, and Pendent Poles
5. FMCC finished Bus island NB near N street
6. Begin Construction of Bus Island near Rhode Island street
7. FMCC onsite providing MOT for Subcontractors
8. PEPCO Onsite relocating vaults and manholes
9. Resident Connection to 12" main

CM Community Outreach Activities

1. Connected with retailers and property owners in project corridor to provide updates and address any questions or concerns. On-site meetings with property owners.
2. Meeting with owner at corner of T and !4th street to address design of his patio. Owner wants to change to red brick

3. Meeting with Room and Board management to address access to their lounge for future storm drain work.
4. Project Website is up and running. Responded to email questions that came through Project Website.

3. ISSUES / ACTION ITEMS

- Ongoing Issues / Items: Pepco working on conflicts (approx. 4 locations) and to give CM a report on time frame for design and corrections.
- PEPCO Electrical duct bank over Water main, Pepco confirm is energized and it will require relocation
- Action Items.-

Action	Description	Action By	Original Date	Expected Date	Status
001	Address the MOT, safety issues within the corridor.	FMCC/Kevin Felix	June 5, 2019	July 9, 2019	Ongoing
002	FMCC to provide ITS components' submittal for DDOT review and approval.	Shaddy Abdelaal	June 11, 2019	July 9, 2019	Ongoing
003	Request Clear Channel acceptance documentation for the bus shelters	FMCC	June 14, 2019	July 9, 2019	Ongoing
004	RFI #15 - Confirm the pricing for the 4 extra poles used for temporary lighting	Shaddy Abdelaal	June 21, 2019	July 5, 2019	Ongoing
005	12" Watermain conflict. Confirm responsibility party for the relocation	DDOT/ Ramesh Mirchandani	June 25, 2019	July 9, 2019	Ongoing
006	48" Watermain conflict. Confirm the condition of the conduit on top of the watermain	PEPCO	June 21, 2019	July 9, 2019	Ongoing
007	Submittal T64R - Plaza Drain. Revise the submittal addressing CM comments.	Abdalla Elsheikh	June 25, 2019	July 5, 2019	Ongoing
008	Submittal T72R - TCP Paving Plan. Address DDOT comments	FMCC	July 2, 2019	July 9, 2019	Ongoing
009	RFI-16 - CB-25 conflict on T Street review.	Kendry Contreras	July 2, 2019	July 9, 2019	Ongoing
010	RFI-16 - CB-25 conflict on T Street, test pits needed.	FMCC	June 25, 2019	July 9, 2019	Ongoing
011	RFI-26 - Tree conflicts. Clarify UFD's requirements regarding the cubic foot deficit	Kendry Contreras	June 28, 2019	July 9, 2019	Ongoing
012	Submit RFI regarding the increase of the bus island width avoiding the valve casing issue south of N Street	FMCC	July 2, 2019	July 9, 2019	Ongoing
013	Send a letter to Mr. Dexter establishing the total amount of 1,000 LBS for extra fittings	Oscar Benitez	June 28, 2019	July 5, 2019	Ongoing
014	Address the issues with cracked/missing sidewalk sections	FMCC	July 2, 2019	July 9, 2019	Ongoing
015	Address DC Water's issue that DEN is covering their curb stops	FMCC	July 2, 2019	July 9, 2019	Ongoing
016	Test pit the 12" water main along 14 th Street north of T Street in trying to determine the limits of the PEPCO conflict.	FMCC	July 2, 2019	July 9, 2019	Ongoing

017	Check if UFD will be fine with FMCC confirming the availabilities of the landscaping items 2 weeks prior to the planting season	FMCC	July 5, 2019	July 5, 2019	New
018	Submit RFI regarding the issue on RIA requesting curb offset by 3" to avoid PEPCO manhole	FMCC	July 9, 2019	July 9, 2019	New
019	Contact Long Fence regarding the status of the ADA Ramp handrail	Cesar Casanova	July 9, 2019	July 9, 2019	New
020	Update the status of the requested TCP for water work at R Street	FMCC	July 9, 2019	July 9, 2019	New
021	Research the spare conduit at SWC of RIA	PEPCO	July 9, 2019	July 9, 2019	New
022	Setup a meeting with DDOT & CM Team regarding the minor adjustments.	PEPCO	July 9, 2019	July 9, 2019	New
023	Submittal T79R - Storm Drain Interception. Revise the submittal addressing CM comments.	Abdalla Elsheikh	July 9, 2019	July 9, 2019	New
024	Forward the issue with the gas manhole at U Street to Washington Gas	CM	July 5, 2019	July 5, 2019	New
025	Insert the missing valve cover at 1724 14 th Street NW	FMCC	July 5, 2019	July 5, 2019	New

4. MEETINGS / PROJECT COORDINATION

Progress Meeting are schedule at the Field Office every Tuesday at 10:30am

5. DAILY WORK PERFORMED

Monday 6/24/2019

FMCC worked at southbound 14th St parking and right travel lanes were closed from Riggs St to S St for continued sidewalk work. Right lanes between N St and Thomas Circle were closed for bus island construction. Water filled plastic jersey barriers and pedestrian barriers were used between N St & Thomas Circle for traffic diversion.

Den United worked at 1700 block of 14th & S St preparing subgrade for PCC sidewalk. Permeable pavers were placed from 1720 to 1734 14th St.

Omni Excavators continued worked at the intersection of 14th & R Street NW installing 8-inch Ductile Iron pipe from Sta. 0+00 to Sta. 0+09.

Prior to the installation, Omni excavated the trench per the design Specs and Standards.

Omni also installed another 8" Gate Valve and Casing at Sta. 0+09

Tuesday 6/25/2019

FMCC closed northbound 14th St parking and travel lane from Riggs St to Swann St for continued hardscape work. Water filled jersey barriers and pedestrian barricades were moved to 14th & N St for directional island work. worked at northbound 14th & N St bus island installing granite curb. Material was backfilled via dump truck and followed up with aggregate base course.

Omni Furbished and installed the PVC Electric Conduits within the area of the proposed Bus Island at the SEC of 14th & N Street NW for the Street Light Pole Foundation TS05 and the Hand Box HB03.

Omni also furnished and installed the PVC Electric Conduits and Street Light Pole Foundations TS29 at 14th Street & S Street and L80-PP at 14th Street & Swann Street NW

D.E.N. worked at NEC of 14th & S St demolishing existing sidewalk for replacement including installation of observation well (1 EA) at permeable paver location. Adjustment to utility manhole (1 EA) was done during sidewalk replacement. Omni Excavators was at the same corner installing traffic signal foundation at future wheelchair location.

Wednesday 6/26/2019

FMCC worked at northbound 14th St where parking and travel lane were closed from S to Swann St for continued hardscape work. Water filled jersey barriers and pedestrian barricades were used at 14th & N St for directional island work. worked at northbound 14th & N St framing and backfilling subgrade for new directional bus island installation. Material was backfilled via dump truck with aggregate base course. PCC base was placed where existing bus pad was removed at new bike lane. New truncated dome surface (8 SF) was placed at island entrance and checked for proper slope for ADA specifications. Remaining 16 SF has not been placed.

D.E.N. worked at 1800 block of 14th St at east side of block from 1803 to 1815 14th St including structural soil for tree zones, permeable paver sidewalk and PCC sidewalk.

Omni Excavators continued worked at the intersection of 14th & R Street NW for the installation of the 8-inch Ductile Iron pipe .

Today, Omni continued backfilling the trench excavated last week to install the 8-inch Ductile Iron pipe from Sta. 0+00 to Sta. 0+25.

At midnight, DC Water shut off the water main service lines and **Omni** started the work at 14th Street & S Street to move the Fire Service water line from 6-Inch main to the 12-inch main and cut & plugged the existing 6-inch water main (K36-Sta 29+50).

The 6-Inch main line will be abandoned in place when all the service lines to business & houses have been moved from the 6-inch to the 12-inch main line.

Tonight, Omni also made the necessary work involved and abandoned the old Fire Hydrant connection lines at 14th & Swann Street and cut & plugged the existing 6-inch water main (K36-Sta 31+95)

A new Fire Hydrant has been installed on Swann Street & 14th Street.

At the end of the work tonight, Omni cleaned up the work areas and safely secured the trenches with steel plates.

DC Water open the water main service lines to the business & residents at 14th & S Street NW.

Thursday 6/27/2019

FMCC worked at northbound 14th St parking and travel lane and were closed from S St to Swann St for continued hardscape work. Water filled jersey barriers and pedestrian barricades were used to 14th & N St for directional island work. FMCC worked at northbound 14th & N St backfilling with aggregate base course in preparation for new directional bus island installation. Material was unloaded via dump truck and followed up with placement of Class F PCC concrete at the nose & main section of directional bus island. Granite at bus island was also checked for maximum slope of 2%.

D.E.N. worked at 1800 block of 14th St at east side of block from 1809 to 1823 14th St including brick gutter placement and PCC sidewalk. Basement damage was found during demolition by D.E.N. at 1823 14th St. Basement was sealed at the basement ceiling and concrete placement was completed. Repair to ceiling is scheduled to be done on 6/28/19 by D.E.N.

Friday 6/28/2019

FMCC worked at northbound 14th St parking and travel lane and were closed from S St to Swann St for continued hardscape work. Water filled jersey barriers and pedestrian barricades were used at this location as

well as 14th & N St for directional island work. worked at northbound 14th & N St demolishing existing pavement in preparation for PCC Bus Stop Pad at SEC of 14th & N St.

D.E.N. worked at 1800 block of 14th St at east side of block from 1801 to 1823 14th St demolition and replacement at NEC of 14th St sidewalk, installation of straight and circular granite including placement of 2 bicycle ramps.

Saturday 6/29/2019

FMCC MOT crew closed northbound 14th & Florida Ave to V St for electric manhole cable pull by FMCC electrical crew. SWC of 14th & RIA was also closed for demolition of new directional bus island to be installed. Water filled jersey barriers (**216 LF**) and pedestrian barriers (**168 LF**) were used at SWC of 14th & RIA for directional bus island construction.

FMCC electrical crew worked at 14th St northbound from Florida Avenue to V St pulling #0000 stranded wire cable and #2 ground cable from the following electric manholes: M85 to M93, M94 to M99 to M100, M100 to M101, and M100 to M106.

6. INSPECTION & MATERIAL TESTS PERFORMED

- QA/QC was onsite performing compaction testing of backfill and aggregate base material, Concrete Testing

7. RFI's/SUBMITTALS

- Requests for Information:
 - o We have received 26 RFIs; 23 RFIs have been answered.
- Submittals:
 - o We have received 79 Submittals; 76 Submittals have been Approved, two have been returned with comments to be addressed by contractor

8. CHANGE ORDERS/TASK ORDERS

- o Article 3 Letter for Bus Shelter Removal
- o Missing ITS Fiber Items
- o Missing Extra Fittings for Water Main work

9. DBE or CBE PARTICIPATION SUMMARIES

- ATCS CBE / DBE Activity:
 - o Hayat Brown LLC.: Provided Office Engineering and Inspection support for this project.
- Fort Myer Construction Corp. DBE Activity:
 - o Omni Excavators Inc.
 - o Den United LLC.
 - o

10. ACCIDENTS/INCIDENT

- Safety incident. - FMCC improper Flagler, work zone safety
- Incident with D.E.N construction punching trough the basement of a business, not providing enough access to business and leaving out tripping hazard, Issues corrected in the field, Official correspondence sent to FMCC regarding lack of supervision. (Mr Kevin Felix was on OSHA 30 and no FMCC supervisor was onsite)
- FMCC Continues to work beyond 3:30 PM Time frame without proper authorization, issue brought up in progress meeting

11. PHOTOS OF WORK PERFORMED THIS PERIOD



Both sections of directional bus island at NB 14th & N St.



Backfill by Omni excavators for hydrant #H11322.



PCC wheelchair ramp placed at NEC of 14th & S St crossing S St.



Demolition by FMCC at future bus island at northbound 14th & N St.



Brick gutter placement continued at south 14th & N St.



Manhole M85 to M93 cable pull by FMCC



Omni installing the 8-Inch Gate Valve at the intersection of 14th & R Street NW



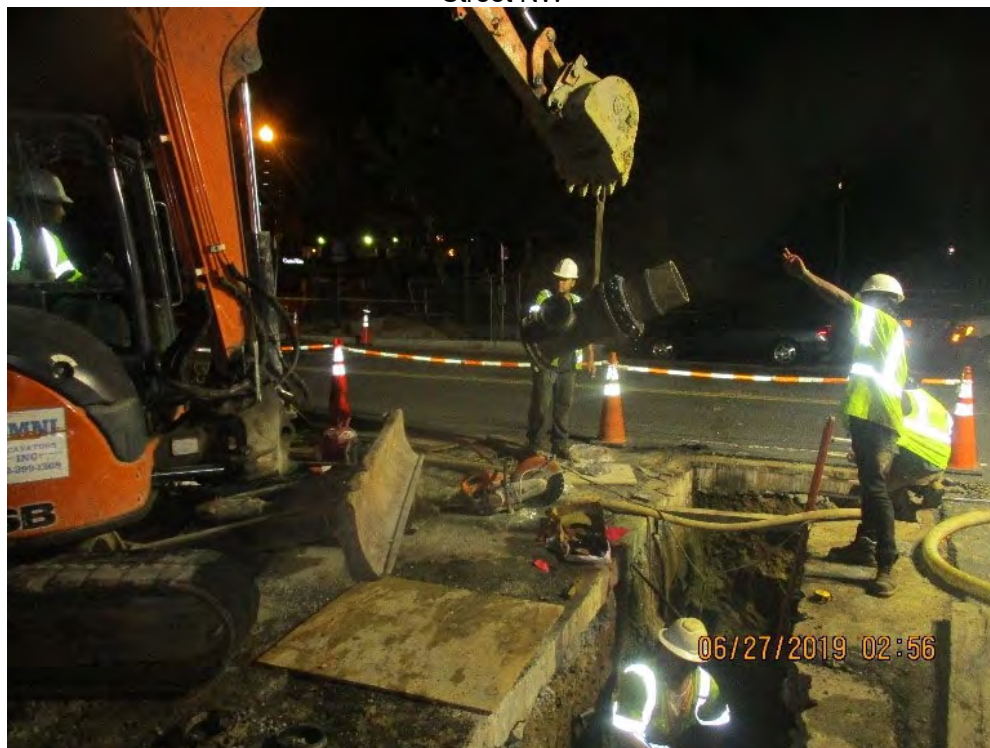
Omni installing the Street Light Pole Foundation TS29 within the area of the proposed Bus Island at 14th & S Street NW



FMCC saw cutting the roadway for the Bus pad installation at 14th & N Street NW



FMCC finishing up the concrete work for the installation of the Bus Pad at the southeast corner of 14th & N Street NW



Omni relocating the Fire service water line at the southwest corner of 14th & S Street NW



DC Water Inspector shutting off the water main line at the intersection of 14th & S Street NW



Omni securing the trench excavated for the Fire service water line relocation at the southwest corner of 14th & S Street NW