

14<sup>th</sup> Street Streetscape Project N.W. From  
Thomas Circle to Florida Ave  
DC Contract No.: DCKA-2016-C-0043

FAP No.: STP-2016 (054)

---

**CONSTRUCTION MANAGER'S  
WEEKLY PROGRESS REPORT  
10/06/2019 - 10/12/2019**

---

**Project Website:** [www.14thstreetproject.com](http://www.14thstreetproject.com)



Tack Coat was placed and several Utility Manholes were raised and adjusted with Metal Rings prior to placement of Asphalt on Friday, 10-11-2019

**PREPARED BY Kendry A. Contreras**

## 1. EXECUTIVE SUMMARY

### Project Description:

The scope of the construction work includes the followings:

- The removal and disposal of existing roadway pavement, curb and gutter and sidewalks, milling of existing asphalt pavement to the extents shown on plans.
- The resurfacing of existing asphalt pavement using 2" Superpave AC surface on 14<sup>th</sup> Street between Thomas Circle and Florida Ave as shown in the plans.
- The replacement of all curbs and gutters with Granite Curbs, 12" Brick Gutter, Concrete Sidewalk, Wheelchair/Bicycle Ramps, and Cobble Stone LID Paver, Bioretention Planters as shown on the plans or as directed.
- The removal and transportation to storage yard of Existing Traffic Signals and Light Poles as shown on plans. Traffic signal relocation and equipment upgrading of Traffic Signals at all intersections of 14<sup>th</sup> Street within the project limit as shown on plans.
- Streetscaping throughout the 14<sup>th</sup> Street corridor as shown in the plans.
- The installation of traffic signing and permanent pavement markings.
- Upgrading of street lighting throughout the 14<sup>th</sup> Street corridor as shown in the plans.
- Construction and upgrading of single catch basin, double catch basin, and triple catch basin.
- Construction / Upgrading of new Watermains, Fire Hydrants
- Full Reconstruction of R Street.
- Installation of new Bus Islands and bus pads as shown on the plans and as directed.
- The installation and use of erosion and sediment control measures as required.
- Mobilization and demobilization, performance of field layout, provision and maintenance of engineer's field facilities, progress photographs, and the proper maintenance of vehicular and pedestrian traffic during construction, including provision of all required construction warning and detour signs and traffic control devices.

## 2. STATUS OF CONSTRUCTION / PROGRESS SUMMARY

### Progress Summary:

1. Omni critical test was not perform, Omni has made no significant progress on getting the leaks resolve. Omni has a crew working on electrical work
2. DC line continue striping operations
3. DEN Is not onsite,
4. FMCC. Continue begin work at the islands of T street and P street (trench drains)
5. PEPCO contractors continue work at Riggs, ( need cable crew to complete)
6. Electrician Continue with work on Light poles and pulling cable
7. Paved block of P street to Cochran

### CM Community Outreach Activities:

8. TBA personnel continues to respond to questions that come through project portal.
9. Continue working with Businesses along R St. block. Red light Bar
10. Meeting with Ellisdale Developer about upcoming work near Florida Ave.

**3. QC/ ISSUES / ACTION ITEMS**

- PEPCO utility conflicts identified at ~ approximately 5 locations:
  - 14th & Riggs – has already started since ~ 08/05/2019. Project duration is ~1month. Schedule completion 10/15
  - 14th & U – There are three (3) manholes that need vertical adjustment and 3 in front of Animal hospital previously identified. Received revised pricing working on Art3 letter
  - Completed work at Florida
- Developer Ellisdale at Florida and 14<sup>th</sup> Street must vacate the staging area and sidewalk to complete that section.
- DC water/ Pepco Conflict still hindering progress at the block of T and U street.
- Production has increased slightly but contractor still slow, they continue to pull their subs to go to other projects (DEN)
- Not finishing the R street Water work can significantly affect the completion of that intersection, Omni is not moving fast enough ( three week on hold)

**ACTION ITEMS.-**

Action	Description	Action By	Original Date	Expected Date	Status
001	Address the MOT, safety issues within the corridor.	FMCC/Kevin Felix	June 5, 2019	October 22, 2019	Ongoing
002	Submit bus shelters Clear Channel full acceptance documentation.	FMCC/John Constantino	June 14, 2019	October 22, 2019	Ongoing
003	FMCC to provide some type of handle for the grate placed IFO Cleaners at 1329 14 <sup>th</sup> Street	FMCC/John Constantino	July 30, 2019	October 22, 2019	Ongoing
004	FMCC to resolve the cracked granite, contact insurance. Public Outreach to schedule a meeting with the businesses for FMCC to present their approach.	FMCC/Abdalla Elsheikh Jerrell Johnson	July 30, 2019	October 11, 2019	Ongoing
005	Mr. Said Chestnut to contact Mr. Jermaine Quattlebaum and start punch list for DC Water work.	ATCS/Said Chestnut and DC Water/ Jermaine Quattlebaum	August 06, 2019	October 22, 2019	Ongoing
006	RFI for the fire hydrant conflict at the Zipcar parking sign at northeast side of Q Street	FMCC/Abdalla Elsheikh	August 27, 2019	October 22, 2019	Ongoing
007	Schedule a meeting with IPMD for the discussion about parking meter/Zip car signs	FMCC/John Constantino	September 10, 2019	October 22, 2019	Ongoing
008	RFI-37, Bioretention 2. Test pit for utility conflict.	FMCC/John Constantino	September 10, 2019	October 22, 2019	Ongoing
009	Review and negotiate PEPCO price proposal for the vertical adjustments within the corridor.	FMCC/Shaddy Abdelaal	September 24, 2019	October 22, 2019	Ongoing
010	Confirm modified section with WMATA/ADA compliance officer and discuss internally with DDOT about the options for the handrail.	CM/Kendry Contreras	October 8, 2019	October 22, 2019	New

011	Submit the new submittals for asphalt and concrete mixes for FY 2019.	FMCC/Abdalla Elsheikh	October 8, 2019	October 22, 2019	New
012	Forward the approval to the pre-caster for the inlet and update CM Team with the delivery schedule.	FMCC/Abdalla Elsheikh	October 8, 2019	October 22, 2019	New

#### 4. MEETINGS/ PROJECTCOORDINATION

- New Progress Meeting are schedule at the Field Office every other Tuesday at 10:30am.
- Meeting with Ellisdale Developer. Summary of discussion:
  - ✓ Starting Monday October 28th, Ellisdale Construction will relocate the 30 yard dumpster to the very south end of our current public space occupancy permit. This will allow FMCC to complete installation of the new curb, gutter, bus stop island, pedestrian pole and lane markings and understand this will take approximately 7-10 business days to complete. Once complete Ellisdale will reclaim that area in accordance with our public space permit and install necessary protection to prevent damage to new curb and island.
  - ✓ Ellisdale will complete installation of all new sidewalk
  - ✓ Installation of WMATA bus canopy ( by FMCC)
  - ✓ Supply and installation of decorative landscape fence ( by FMCC)
  - ✓ Installation of parking meter ( by FMCC)

#### 5. DAILYWORK PERFORMED

##### Monday 10/07/2019

**FMCC** placed, water filled jersey barriers, traffic drums, cones and arrow board at 14th & R St for electrical conduit work by Omni. SEC of 14th & R St used plastic jersey barriers during concrete curing of bus stop pad.

**FMCC hardscape** crew continued hardscape work at NW corner of 14th & U St for sidewalk interceptor drain channels and corrected misaligned granite curb at NEC of 14th & U St with concrete and wood bracing. Sidewalk interceptor drain will be paid for following placement of hardware and steel plate installation.

**Omni** was onsite to continue excavation from new electrical manhole M46 toward existing manhole EM05. PVC installation began at trench from M46 to EM05 and M46 to traffic signal pole foundation L58/PP/TS.

##### Tuesday 10/08/2019

**FMCC** crew worked on forming the SWM System channels at Bus Island at U St. & 14th St. 2001 (Subway Sandwich Restaurant) North-Bound Direction; FMCC placed 4 cubic yards, DC-Dot Class E Concrete for Storm Channels.

**FMCC** also laid-out the Bus Island at 14th St. & T St. NW and FMCC crew saw cut the perimeter of proposed Bus Island, which will be excavated on upcoming Wed. 10-9-2019, per FMCC reps.



**FMCC** crew also set up the railing-Frame for Solid Steel Crate for Bus Island Storm Water Channels, at Intersection of Rhode Island Ave. on SB Directions in front of 7-11 Store. The crew installed the Frame and Grates for both Channels.

**Omni, Inc.** crew both for Signal Light was onsite, they excavated two trenches for 4" & 2" Conduits connecting with the proposed (4'x4'x4') Manhole for Traffic Signal Light; during their excavation the crew run into an existing Live Gas Line (3" Diameter Pipe) which covered by a Sleeve and Direct. However, the clearance between Traffic Signal Conduits and Gas Line was approx. 6" to 7" in order to avoid encasing of Gas Line into Concrete Duct Bank. Omni was onsite to continue electric PVC conduit from new electrical manhole M46 toward existing manhole EM05. PVC installation began at trench from M46 to EM05 and M46 to traffic signal pole foundation L58/PP/TS. Class B concrete was placed at both foundations L58 and TS26 including PVC conduit trench from M46 to EM05.

**DC Line, Inc.** Please note DC Line had 2 crews onsite, the 1st crew worked on placement of Bike Symbols and Arrows from Thomas Circle thru Q St. in both North & South Bound directions. While the 2nd Crew focused on placement of Permanent Yellow Center-Line Markings as well as Crosswalk markings at Intersection of Rhode Island and 14th St. NW.

### **Wednesday 10/09/2019**

**FMCC** crew worked placement of GAB (Aggregate Base) for Directional Bus Island at U St. N.W. & 14th St. 2001 (Subway Sandwich Restaurant) North-Bound Direction; and at South-Bound; 2000 Block at front of F. Reeves Municipal Bldg Center. FMCC also placed GAB and compacted the aggregate base with Jumping Jack. FMCC hardscape crew continued hardscape work at NE and NW corner of 14th & U St placing Class F concrete at directional bus island.

**Omni Excavators** was onsite at NWC of 14th & U and R St excavating for (3) electric hand boxes which were installed by close of work day. Work is scheduled to continue tomorrow with more excavation for electric conduit trenching. Omni also had 2nd crew onsite working on pressure test at R St. Test was not completed. Backfill of electric duct work trenching at NWC of 14th & R St including temporary asphalt.

Omni, Inc. Crew also worked and installed the 1' X1' X3' Electrical Concrete Box for Bus Island Shelters at U St. & 14th St. NW at 2000 Block & 2001 Block, NW.

**DC Line Inc.** crew primarily focused on Removing old Yellow tapes (Double Yellow) tapes from the Center Lanes in order to replace them with Permanent Yellow Tapes at Center Lanes from Q St. thru R. I. Ave. NW.

### **Thursday, 10/10/2019**

**FMCC** placed water filled jersey barriers, traffic drums, cones and arrow board at 14th & T St for hardscape work by FMCC crew. FMCC set up MOT signs and devices for various locations maintaining minimum of one travel lane within the work zone as per approved specification and traffic control plan.

**FMCC hardscape** crew began hardscape work at SEC of 14th & t St and continued brick gutter placement at SEC of 14th & R St bus island. FMCC Concrete crew stayed till 5 p.m. to fix a Brick Gutter Broken up by Delivery Trucks and Buses at NEC of P St.& 14th St. NW. They also adjusted one manhole by Brick & Mortar at 1400 Block near Intersection of R.I Ave & 14th at SB.

**Omni Excavators** was onsite momentarily due to broken mini excavator. No work was done at 14th & R St electrical trench.

**FMCC Milling** contractor excavated & hauled milling materials, North Bound between R.I. Ave & P St. NW, and P St. & 14th St. NW were milled.

FMCC Milling operation covered P to R.I. Ave at 14th St. plus West Bound of P St. & 14th St. at PNC Bank to the ROW Limits at Bus Pad area.

FMCC Asphalt Division also had 8 hours of Street Sweeper cleaning up crew sweeping & Cleaning the work zone the milling materials and Debris in Milling Zone. After the cleaning operations; the painter painted all crosswalk crossings, Bike Path, Double Yellow Lines and divided lanes.

### **Friday, 10/11/2019**

**FMCC** set up MOT signs and devices for five locations maintaining minimum of one travel lane within the work zone as per approved specification and traffic control plan. All MOT signs, Bike Share and Arrow board placed at least between 75' to 100 Ft a head of the Asphalt Work Zone between Rhode Island Ave, and P St. NW including the Intersection of P St. & 14th St. both at EB and WB Directions.

**Omni Excavators** was onsite to place electrical PVC conduit from electrical manhole M72 to TS36 and hand box HB10 at SEC of 14th & T St. Included was the forming and placement of foundation TS36 (1 EA).

**FMCC hardscape** crew continued hardscape work at SE corner of 14th & T St installing granite curb for directional bus island on northbound 14th St including dry mix for granite backfill. Curb included straight and circular curb. Utility manholes were adjusted and will be paid for upon completion.

**FMCC Asphalt Division** placed a total =350 Ton of Surface Course Asphalt 12.5mm, Asphalt placement operation finished by 8 p.m. Asphalt Work Zone between Rhode Island Ave, and P St. NW including the Intersection of P St. & 14th St. both at EB and WB Directions.

### **Saturday, 10/12/2019**

**No work.**

## 6. INSPECTION & MATERIAL TESTS PERFORMED

- 1) Cylinders on Bus island.
- 2) Density test performed of bus pads
- 3) **10/09/2019 Wed.-** U St. N.W. & 14th St. 2001 first 2 tests failed the 93% Compaction Test Criteria for PCC Directional Bus Island Tests; however, the Final two tests, passed with first with 93.5% while the 2nd Test was passed with 95.8%. FMCC Concrete Driver picked up the 4 cylinders for Set 89A, 89B, 89C and 89D to DC-DoT Concrete Lab after 48 Hours per DC-DoT specification and requirements.
- 4) **10/11/2019 FRI** QC Rep drilled and cored 5 Asphalt 12.5MM Surface Core samples as follows: One at North-Bound, Two (2) at South-Bound, between P St. and R.I. Ave. NW; One at P & 14th Intersection at East-B; and one (1) at West Bound near the Bus Pad at Bus Shelter. I signed and received the 5 core samples to be delivered to DC-DOT Asphalt QC Lab, on Friday, 10-11-2019. .
- 5) **10/11/2019 FRI** Quality Control Rep conducted Ten (10) Asphalt Compaction Density Tests; per DC-dot specification; the minimum Asphalt density required is =96%; and the Ten (10) tests results were as follows: all ten (10) tests passed the 96% Compaction Threshold; the tests were conducted at the following stations/Location; 1400 A, 1408, 1416, and Station No. 1418 at the SB from R.I Ave thru P St Intersection. QC Rep-Technician also conducted One Test at P & 14th St. EB, one at C/L near Bus Pad at West-Bound and One at C/L of the Intersection. The Tech also

conducted 3 more Nuke Asphalt Compaction Tests at NB at following Stations: Sta. 1401, Sta. 1409 and Sta.1413 between P St. and R. I. Ave at North-Bound Direction.

## 7.RFI's/SUBMITTALS

### 1. Requests for Information:

- To date, we have received **38** RFIs; **35** RFIs have been answered.

### 2. Submittals:

- We have received **84** Submittals; **83** Submittals have been Approved.

## 8. CHANGEORDERS/TASKORDERS

- Received signed CO submitted to FMCC for missing ITS fiber items.
- Received signed CO submitted to FMCC for extra fittings for water main work.
- FMCC to revise overhead cost (field office, MOT...) change order for 6month contract extension. Received breakdown, CM recommended not approval because FMCC is including Oh for other project. Forwarded to DDOT
- Received FMCC proposal for PEPCO manhole vertical adjustments. Price negotiation held, Received revised price. Waiting for Art 3 letter
- Waiting for ATCS MOD 3 Additional funding to continue inspection services in October
- Price breakdown for add water work received from FMCC. Tie-in were priced separately. DC water will not agree.

## 9. DBE or CBE PARTICIPATION SUMMARIES

### 3. ATCS CBE / DBE Activity:

- Hayat Brown LLC.: Provided Office Engineering and Inspection support for this project.
- Cube root: Provided Inspection support

### 4. Fort Myer Construction Corp. DBE Activity:

- Omni Excavators Inc.
- Den United LLC.
- DC Line

## ACCIDENTS/INCIDENT

No Incidents to report.

## 11. PHOTOS OF WORK PERFORMED THIS PERIOD

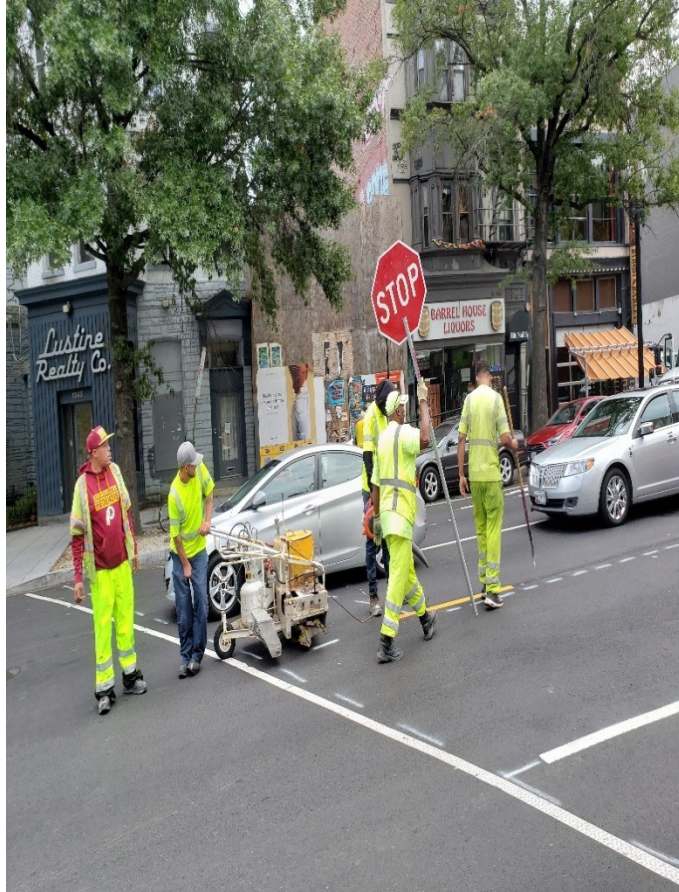


FMCC crew installed Steel Frames and Crates for Storm Channels at Bus Island at R.Island Ave. & 14th St. NW in front of 7-11 Store



Omni, Inc. crew excavated and installed 2" & 4" Conduits for Traffic Signal Lights & then placed Class B Concrete for TS Conduits-Duct Banks, On Tues. 10-8-2019.





DC Line Crew marked and placed Permanent Yellow Line Markings at Center Line (Double Yellow Lines) from Q St. NW thru Thomas Circle on Tuesday, 8 Oct. 2019.

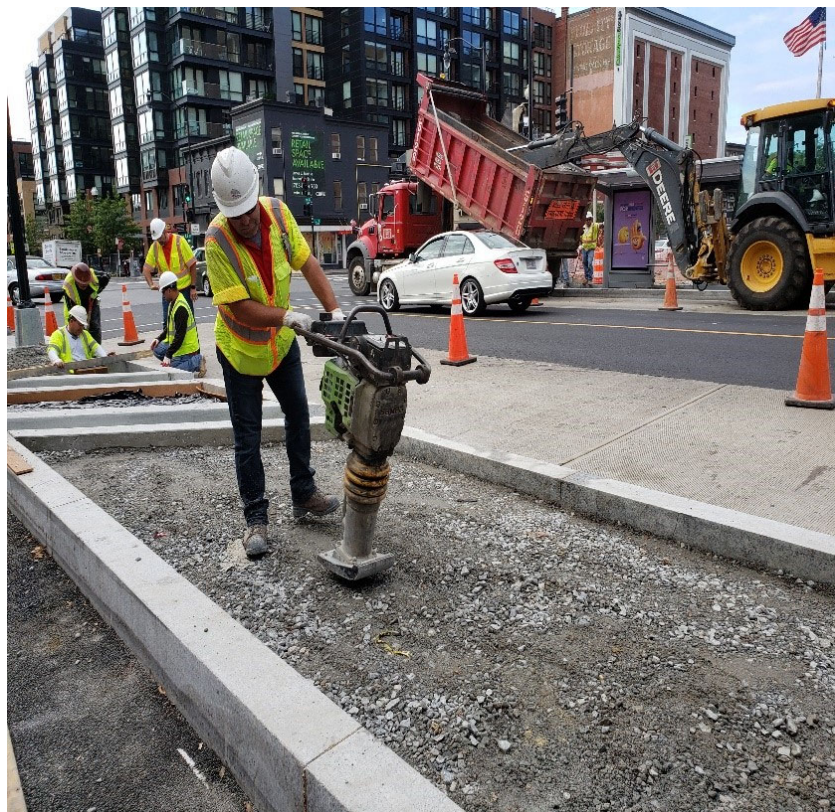


OMNI, Inc. crew along with DC Water Inspector conducted Water Pressure Test for the new Water Main on Wed. 10-9-2019, at Corner of R St. & 14th St. NW.





DC DoT Geotech Rep conducted several Nuke Compaction Tests for GAB Materials placed & Compacted by FMCC for Bus Island Directional, on Wed. 10-9-2019.



Concrete placed GAB at 2 Bus Islands at U St. & 14th St. NW & Compacted which Passed Geotech Tests by DC-DoT Technician on Wed. 10-9-2019.





Interceptor drain channel formed by FMCC at NEC of U St



Signal pole foundation L58 at NWC of 14th & R St.





PVC conduit placed from M46 to EM05.



Pressure testing at 1357 R St standpipe by Omni.





Class F concrete completed at NWC of 14th & U St.



Backfill of NWC of 14th & R St near signal manhole M46





Multiple utility manholes to be adjusted and repaired.



Excavation of SEC of 14th & T St bus island





FMCC Asphalt division utilized Flaggers and Spotters plus MOT signs & Cones for Traffic Safety per DC-DoT.



FMCC utilized MOT arrow boards, Orange Barrels and Cones to manage and maintain safe and efficient Peds, Bike and Vehicle traffic during the evening and night Milling



operation.



FMCC Asphalt Plant No. 2 Broke down which caused delay and switch to Plant No. 1 in Asphalt delivery and paving operation to finish at 7:45 P.M. on Friday, 10-11-2019.



FMCC Asphalt Division placed 350 Ton of 12.5MM Surface Asphalt on Friday, 10-11-2019; P St. to R.I Ave & 14th St.





FMCC utilized Flaggers and Spotters to direct Peds, Bike and Vehicle Traffic during Paving Operation at 14th St. from P St. to R.I. Ave. NW.



Omni and FMCC working at bus island location





Ramhoe used to demolish for PVC conduit tie-in by Omni



PVC conduit placed by Omni from M72 to TS36 and HB10