

**14<sup>th</sup> Street Streetscape Project N.W. From  
Thomas Circle to Florida Ave  
DC Contract No.: DCKA-2016-C-0043**

FAP No.: STP-2016 (054)

---

**CONSTRUCTION MANAGER'S  
WEEKLY PROGRESSREPORT  
8/5/2019 - 8/9/2019**

---

**Project Website:** [www.14thstreetproject.com](http://www.14thstreetproject.com)



**PREPARED BY Mark R. Regis**

## 1. EXECUTIVE SUMMARY

### Project Description:

The scope of the construction work includes the followings:

- The removal and disposal of existing roadway pavement, curb and gutter and sidewalks, milling of existing asphalt pavement to the extents shown on plans.
- The resurfacing of existing asphalt pavement using 2" Superpave AC surface on 14<sup>th</sup> Street between Thomas Circle and Florida Ave as shown in the plans.
- The replacement of all curbs and gutters with Granite Curbs, 12" Brick Gutter, Concrete Sidewalk, Wheelchair/Bicycle Ramps, and Cobble Stone LID Paver, Bioretention Planters as shown on the plans or as directed.
- The removal and transportation to storage yard of Existing Traffic Signals and Light Poles as shown on plans. Traffic signal relocation and equipment upgrading of Traffic Signals at all intersections of 14<sup>th</sup> Street within the project limit as shown on plans.
- Streetscaping throughout the 14<sup>th</sup> Street corridor as shown in the plans.
- The installation of traffic signing and permanent pavement markings.
- Upgrading of street lighting throughout the 14<sup>th</sup> Street corridor as shown in the plans.
- Construction and upgrading of single catch basin, double catch basin, and triple catch basin.
- Construction / Upgrading of new Watermains, Fire Hydrants
- Full Reconstruction of R Street.
- Installation of new Bus Islands and bus pads as shown on the plans and as directed.
- The installation and use of erosion and sediment control measures as required.
- Mobilization and demobilization, performance of field layout, provision and maintenance of engineer's field facilities, progress photographs, and the proper maintenance of vehicular and pedestrian traffic during construction, including provision of all required construction warning and detour signs and traffic control devices.

## 2. STATUS OF CONSTRUCTION / PROGRESS SUMMARY

### Progress Summary:

1. FMCC milled & paved from on 14<sup>th</sup> St. NW from Thomas Circle to Rhode Island Ave.
2. Omni continues new water main installation work at 14<sup>th</sup> St. NW & R St.
3. Omni conducted test pit at 14<sup>th</sup> & T before placing grade inlet to satisfy RFI#16
4. FMCC completed milling right lane, middle lane & parking curb lane (NB) from P St. to Corcoran St. during night shift (7pm - 5am) & placed temporary makings for bike lane.
5. FMCC provided on-site Safety Officer & MOT for Subcontractors along 14<sup>th</sup> St. corridor
6. DDOT Rep on-site to provide oversight of milling & paving operations
7. FMCC constructed bus island, straight granite curb at 14<sup>th</sup> St. & R and 14<sup>th</sup> & U St.
8. DEN completed PCC Sidewalk, Granite Curb, Brick Gutter, ADA Ramps at 1945 14th St., 14<sup>th</sup> & Wallach and NEC corner of 14th St. & U St.
9. DEN continues punch list sidewalk concrete repair work at the corner of 14<sup>th</sup> St. & N St.
10. FMCC paved east & west sides of the intersection of Rhode Island Ave & 14<sup>th</sup> St. NW

**CM Community Outreach Activities:**

1. TBA did reach out for CM Team to resolve matter of loose railings & damage brick work blamed on sidewalk concrete work completed by DEN Construction. This matter has been escalated to FMCC and placed on punch list of correction items.
2. TBA addressed community complaints & blogs regarding night shift milling & paving operations
3. TBA personnel continues to respond to questions that come through project portal.

**3. QC/ISSUES / ACTION ITEMS**

- Man-holes not flush with finish asphalt surface along from N St. to RI Ave identified for corrective action
- PEPCO utility conflicts identified at ~ approximately 7 locations.
- PEPCO's upcoming work schedule:
  - 14th & Riggs - Mobilization was to begin on ~ 08/05/2019. Project duration is ~1month.
  - 14th & R - Mobilization was to begin on ~ 08/05/2019. Project duration is ~2 weeks.
  - 14th & U - Mobilization start date of ~ 08/12/2019.
  - 14th & P – Manhole abandonment project to start on week of ~8/19/2019.
  - 14th & Florida - Permit tracking #334702 has been approved.
  - FMCC conducting manhole relocation work OBO of PEPCO in front of 1720 14<sup>th</sup> St. NW.

Action	Description	Action By	Original Date	Expected Date	Status
001	Address the MOT, safety issues within the corridor.	FMCC/Kevin Felix	June 5, 2019	August 20, 2019	Ongoing
002	Forward Clear Channel acceptance documentation for the bus shelters	FMCC/John Constantino	June 14, 2019	August 20, 2019	Ongoing
003	12" Watermain conflict. Confirm responsibility party for the relocation	DDOT/Ramesh Mirchandani	June 25, 2019	August 20, 2019	Ongoing
004	Address the issues with cracked/missing sidewalk sections	FMCC	July 2, 2019	August 20, 2019	Ongoing
005	Address DC Water's issue that DEN is covering their curb stops, between R and T Streets.	FMCC/DEN	July 2, 2019	August 20, 2019	Ongoing
006	Insert the missing valve cover at 1724 14 <sup>th</sup> Street NW	FMCC	July 5, 2019	August 20, 2019	Ongoing
007	FMCC to provide some type of handle for the grate placed IFO Cleaners at 1329 14 <sup>th</sup> Street	FMCC/John Constantino	July 30, 2019	August 20, 2019	Ongoing
008	DDOT to provide FMCC Article 3 letter for the ITS Components.	DDOT/ Samuel Ayodele	July 30, 2019	August 20, 2019	Ongoing
009	FMCC to resolve the cracked granite, contact insurance, and follow up with the businesses.	FMCC/Abdalla Elsheikh	July 30, 2019	August 20, 2019	Ongoing
010	Mr. Said Chestnut to contact Mr. Jermaine Quattlebaum and start punch list for DC Water work.	ATCS/Said Chestnut and DC Water/ Jermaine Quattlebaum	August 06, 2019	August 16, 2019	Ongoing
011	Submit RFI for the need of the curb cut in bus island after shifting the ADA ramp at the SEC of T Street.	FMCC/Abdalla Elsheikh	August 13, 2019	August 16, 2019	Ongoing
012	Address the comments regarding the pricing for the 4 extra poles used for temporary lighting	FMCC/Shaddy Abdelaal	August 13, 2019	August 20, 2019	New

013	RFI-16, CB-25 conflict on T Street. Provide a sketch with the proposed solution	FMCC/ Cesar Casanova	August 13, 2019	August 20, 2019	New
014	RFI-16, CB-25 conflict on T Street. Provide a write-up on the proposed solution	DC Water/ Jermaine Quattlebaum	August 13, 2019	August 20, 2019	New

#### 4. MEETINGS/ PROJECT COORDINATION

- Progress Meeting are schedule at the Field Office every Tuesday at 10:30am
- DDOT PM was on-site to visit project and attend weekly progress meeting

#### 5. DAILY WORK PERFORMED

##### Monday 8/5/2019

**FMCC** worked from Thomas Circle to Rhode Island Ave, paving north and southbound. FMCC Asphalt Division placed a cumulative 257.82 Tons of 12.5 mm warm-asphalt from Thomas Circle through the intersection of N St. NW. & 14th St. NW then onto Rhode Island Ave. FMCC utilized channelizing devices, proper MOT signs and flaggers to direct pedestrian and bike & vehicle traffic at Rhode Island Ave. & 14th St.

**DEN** sidewalk crew was onsite to complete punch list work from Thomas Circle to Rhode Island Ave on both east and west side of 14<sup>th</sup> St. Sidewalk and wheelchair surface areas were removed and replaced with a total of 5CY of 3500 psi (Class F) concrete and protected with traffic devices during curing. Work is scheduled to be ongoing until all punch list items are corrected.

**Omni Excavators** continued work at 14<sup>th</sup> & R St. conducting water main connections, location and excavating near westbound R St. from newly placed water main DIP for connection location through conflicting electric duct bank to 48" water main.

##### Tuesday 8/6/2019

**FMCC** Asphalt Division tacked and placed cumulative 175.6 Tons of asphalt from Thomas Circle through N St. Intersection & 14th St. NW to Rhode Island Avenue Intersection. Asphalt Compaction and Quality Control Tests were conducted by 2 Geo Techs from Dulles Engineering LLC. Six (6) asphalt compaction tests were conducted; three (3) core samples were taken and one asphalt quality sample was collected per 500 tons delivered.

**DEN** Construction worked on two catch-basins with gutter pavers on both sides (EB & WB) of Rhode Island Ave and 14<sup>th</sup> St. NW Intersection. DEN also continued concrete sidewalk punch list repair work.

##### Wednesday 8/7/2019

**FMCC** worked from Thomas Circle to Rhode Island Avenue paving north and southbound 14<sup>th</sup> St. They also milled NB on 14<sup>th</sup> St from Rhode Island to Corcoran St and installed temporary 4" lane markings for traffic at NB travel lanes. Proper MOT was established at the intersections of 14<sup>th</sup> & Thomas Cir, 14<sup>th</sup> & R St., 14<sup>th</sup> & Wallach, 14<sup>th</sup> & U St. and 14th & Swann St. FMCC also excavated, formed & poured concrete over PEPCO manhole vault, bus island; completed brick & mortar at 14<sup>th</sup> & U St. and bus Island at 14<sup>th</sup> & R.

**Omni Excavators** continued water main connection work at 14<sup>th</sup> & R St.

**DEN** Construction crew was onsite to complete for punch list correction work from N St. to Rhode Island Avenue on east and west side of 14<sup>th</sup> St. Sidewalk and wheelchair areas were removed and replaced with concrete and protected with traffic devices during curing.

**Thursday 8/8/2019**

**FMCC** work on Common Excavation for Bus Island at 14<sup>th</sup> & R at the Curb-Parking Lane plus the Sidewalk as well for Bus Island Common excavation.

**DEN** worked at NEC of 14<sup>th</sup> & Wallach PI, NEC of 14<sup>th</sup> & U St, 1925 Block and 1447 Block 14<sup>th</sup> St. crosswalk. DEN crew demolished existing PCC sidewalk, granite curb and wheelchair ramp which was hauled and replaced with new ADA Wheel-chair ramp. They placed and compacted GAB prior to placement of 4" Class-F PCC base for sidewalk. The crew also placed straight granite curb, new PCC sidewalk and PCC bicycle/wheelchair ramp.

**Friday 8/9/2019**

**FMCC** constructed bus island, straight granite curb at 14<sup>th</sup> St. & R and 14<sup>th</sup> & U St. Proper MOT was established at the intersections of 14<sup>th</sup> & Thomas Cir, 14<sup>th</sup> & R St., 14<sup>th</sup> & Wallach, 14<sup>th</sup> & U St. and 14<sup>th</sup> & Swann Street.

**DEN** continued working at NEC of 14<sup>th</sup> & Wallach PI, NEC of 14<sup>th</sup> & U St, 1925 Block and 1447 Block 14<sup>th</sup> St. crosswalk. DEN crew demolished existing PCC sidewalk, granite curb and wheelchair ramp which was hauled and replaced with new ADA Wheel-chair ramp. They placed and compacted GAB prior to placement of 4" Class-F PCC base for sidewalk. The crew also placed straight granite curb, new PCC sidewalk and PCC bicycle/wheelchair ramp. The DEN crew placed 57.50 LF of straight granite; 76.33 brick gutter on 14<sup>th</sup> St. NW between Wallach Place & U St. The crew placed 10" common embankment, topped with 4" of GAB. Total PCC sidewalk placed totaled 717.21 SY at 14<sup>th</sup> St. NW & Wallach Place; NEC of 14<sup>th</sup> St. NW and U St. adjacent to 1947 14<sup>th</sup> St. NW. The crew utilized water spray to control Dust from Saw Cut of sidewalk concrete and Granite Stone; cleaned up all debris and swept the sidewalk prior to opening the sidewalks for pedestrian traffic.

**6. INSPECTION& MATERIAL TESTS PERFORMED**

1. During paving operations, asphalt compaction and quality control tests were conducted by 2 Geo Techs from Dulles Engineering LLC. QC tests conducted included:
  - Asphalt Compaction Tests every 150 SF for a total of 10 tests.
  - 4 Cores Samples taken and brought to the lab for testing.
  - One (1) sample of asphalt was taken per every 500 tons of asphalt delivered.
  - Quality control checks for temperature & density conducted and documented.
2. Concrete cylinders samples were collected for testing and sent to the laboratory. On-site quality control checks were made for slump, class and expiration time of concrete batch.

**7. RFI's/SUBMITTALS****1. Requests for Information:**

- To date, we have received **34** RFIs; **34** RFIs have been answered.

**2. Submittals:**

- We have received **82** Submittals; **78** Submittals have been Approved.

**8. CHANGE ORDERS/TASK ORDERS**

- Article 3 Letter provided for Bus Shelter Removal.
- PCO submitted to DDOT for missing ITS fiber items.
- PCO submitted to DDOT for extra fittings for water main work.
- FMCC to revise overhead cost (field office, MOT...) change order for 6 month contract extension.

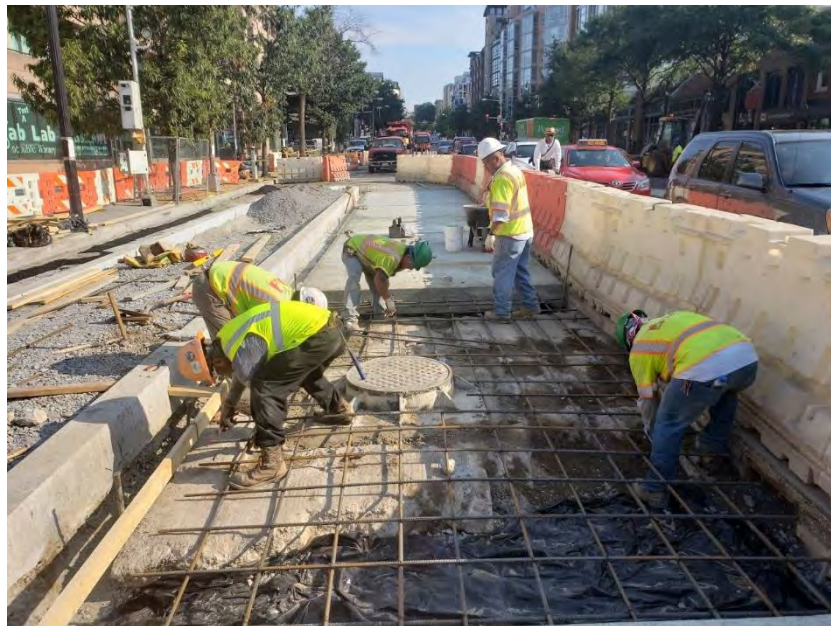
## 9. DBE or CBE PARTICIPATION SUMMARIES

3. ATCS CBE / DBE Activity:
  - Hayat Brown LLC.: Provided Office Engineering and Inspection support for this project.
  - Cube root: Provided Inspection support
4. Fort Myer Construction Corp. DBE Activity:
  - Omni Excavators Inc.
  - Den United LLC.

## ACCIDENTS/ INCIDENT

- No major incidents to report

## 11. PHOTOS OF WORK PERFORMED THIS PERIOD



FMCC forming & install re-bar around PEPCO manhole vault for bus lane at 14<sup>th</sup> & U



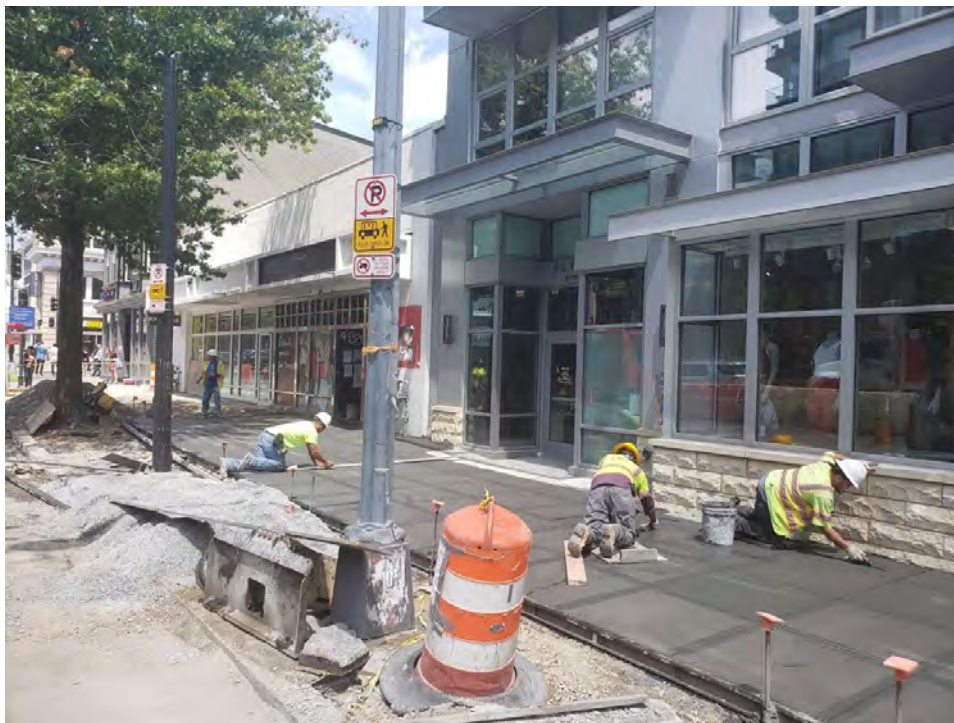
Finished 4500 psi concrete surface of bus pad & adjusted PEPCO man hole vault



Asphalt paving at the intersection of 14<sup>th</sup> St. NW & Rhode Island Ave.



Test pit for underground utilities prior graded inlet install at 14<sup>th</sup> NW & T St.



DEN completing sidewalk work at 1900 block of 14<sup>th</sup> street towards U St.





FMCC completing brick & gutter work at 14<sup>th</sup> St. NW & U St.



DEN Construction completed ADA ramp at the corner of 14<sup>th</sup> St NW & U St.



DEN Construction completed sidewalk and ramp at 1900 block of 14<sup>th</sup> St. NW



Straight Granite Curb install at 14<sup>th</sup> St. NW & R Street



FMCC install bus island with dry concrete mix at 14<sup>th</sup> St. NW & R St.



Excavation & compaction of GAB prior to sidewalk concrete install at 1925 14<sup>th</sup> St. NW



Excavation for watermain installation work at 14<sup>th</sup> & R St.



Milling of 14<sup>th</sup> St. NB by FMCC between Rhode Island Ave & P St.